

Printer Driver

Setup Guide

This guide describes how to set up the Printer Driver for Windows 8, Windows 7, Windows Vista, Windows XP.

Before Using this Software

Before using the printer driver, be sure to read the "Readme" file.

UP-D898MD

UP-X898MD

Table of Contents

Configuring the Printer	3
[Main] tab Settings	4
[Density Adjust] tab Settings	5
[Settings] tab Settings	6
[Message] tab Settings	7
Message list	8
Cautions for Use	8

Microsoft and Windows are registered trademarks of Microsoft Corporation. Other company names and product names mentioned in this guide are also trademarks and registered trademarks.

The screens used to describe setup in this guide assume that the UP-D898MD/UP-X898MD printer is used in a Windows 7 environment. For further details on settings, refer to the operating instructions for the printer in combination with this manual.

Configuring the Printer

You can open the UP-D898MD/UP-X898MD settings screen and configure various settings before you begin printing from applications.

On Windows 8, Windows 7, Windows Vista, or Windows XP, set up the printer in the following environment.

- Display resolution more than SVGA (800 × 600)
- Screen character size is the default.
 - Windows XP: Normal size (96 DPI)
 - Windows Vista: Default scale (96 DPI) - fit more information
 - Windows 8, Windows 7: smaller - 100% (default)

You can open the settings screen using one of the following methods.

- On the [Start] menu, select [Devices and Printers] ([Control Panel], then [Printer] on Windows 8; [Control Panel], then [Printer] on Windows Vista; [Printers and Faxes] on Windows XP). Select the Sony UP-D898MD/X898MD printer icon, then right-click to select [Printing preferences] (the same on Windows 8; [Select printing preferences] from the command bar on Windows Vista; [Printing preferences] from [File] menu on Windows XP). The settings that you make here are normally used as the default settings for the UP-D898MD/UP-X898MD printer. However, the default settings of some application software may take precedence.
- On the print setting screen of your application, click the command used to make printer settings. The settings made this way only remain valid until you close the application.

This guide describes the tabs that appear in the UP-D898MD/UP-X898MD settings screen.

[Main] tab

Adjusts the basic settings related to printing, such as paper size, number of print copies, etc.

[Density Adjust] tab

Adjusts the density of the print images.

[Settings] tab

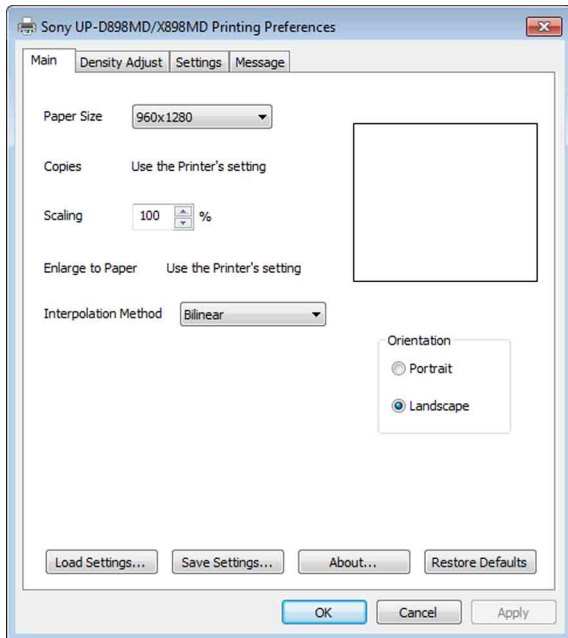
Selects whether to use the printer setting or the printer driver setting.

[Message] tab

Sets the display settings related to message dialog boxes.

[Main] tab Settings

This tab is used to make basic printing settings.



Paper Size

Select the paper size.

Size (dots)	Size (length)
960 × 1280	75 × 100 mm
1280 × 1280	100 × 100 mm
1920 × 1280	150 × 100 mm
3840 × 1280	300 × 100 mm
4096 × 1280	320 × 100 mm
1920 × 1280 (fix)	150 × 100 mm

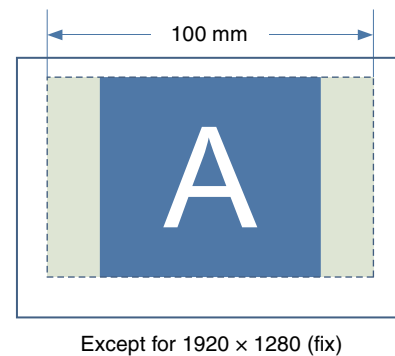
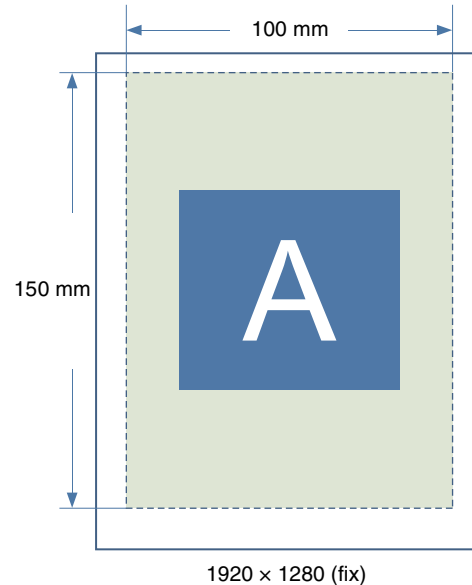
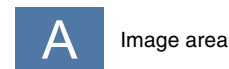
When you select 1920 × 1280 (fix), the paper size is fixed (the printable area is fixed at 150 × 100 mm). If a printing image is smaller than the printable area, margins are added to the top, bottom, left and right of the image.

When you select a size other than 1920 × 1280 (fix), the paper length varies depending on the size of the image you print. If the printing image is smaller than the printable area, margins are added only to the left and right of the image. The paper is cut short by the lengths of the top and bottom margins.

Note

Depending on the application, the paper may not be cut.

Print results



Copies

Select the number of copies to print (1 to 10).

Note

When the [Copies] check box in the [Settings] tab is selected, the printer setting is used. To use the printer driver setting, clear the [Copies] check box in the [Settings] tab and make the setting here.

Scaling

Select the rate of enlargement or reduction (25% to 400%).

Enlarge to Paper

Select this check box to automatically enlarge a print to fit the paper size. You can specify the interpolation method used to enlarge the print to fit the paper size with the [Interpolation Method] setting.

Note

When the [Enlarge to Paper] check box in the [Settings] tab is selected, the printer setting is used. To use the printer driver setting, clear the [Enlarge to Paper] check box in the [Settings] tab and make the setting here.

Interpolation Method

Specify the interpolation method used when resizing images.

The interpolation method specified with this setting is applied when resizing images for enlarging images to fit the paper size.

The available settings are [Bilinear] and [Nearest Neighbor].

Orientation

Select [Portrait] or [Landscape] for the print orientation.

Load Settings

Loads stored setting configurations from a file.

Save Settings

Saves all print setting configurations to a file.

About

Displays the version information of this printer driver.

Restore Defaults

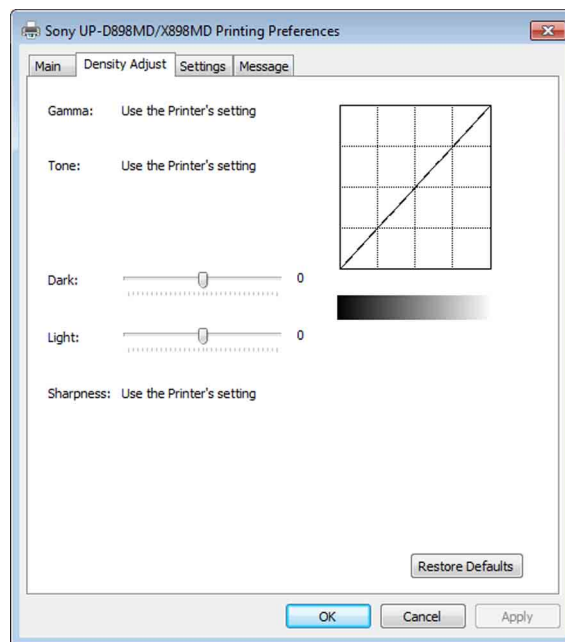
Restores all settings in the [Main] tab to their default condition.

[Density Adjust] tab Settings

Adjusts the density of the image. The adjustment is reflected in the density graph and the gradation bar at the upper right of the setting screen. However, the effect of the preset value of [Gamma] and [Sharpness] are not reflected.

The vertical axis of the density graph expresses the density of the image actually printed, where the upper limit relates to white density and the lower limit relates to black density.

The horizontal axis expresses image data, where the upper limit relates to white data and the lower limit relates to black data. The gradation bar expresses the actual density instead of the value of the vertical axis of the density graph.



Gamma

Selects the intensity of the halftone gradation.

If an image contains a lot of black or white portions, by adjusting this setting, you can obtain clearer detail in those portions.

Item	Explanation
TONE1	When you print an image which has many white portions (soft gradation)
TONE2	Standard
TONE3	When you print an image which has many black portions (hard gradation)
TONE4	When you print an image which has many white portions more (softest gradation)

Note

When the [Gamma] check box in the [Settings] tab is selected, the printer setting is used.

To use the printer driver setting, clear the [Gamma] check box in the [Settings] tab and make the setting here.

Tone

Drag the slider to select the level of gradation. The larger the selected value, the darker the gradation. You can adjust the gradation to one of 65 values. The standard value is 0. The adjustable range is -32 to +32.

Note

When the [Tone] check box in the [Settings] tab is selected, the printer setting is used.

To use the printer driver setting, clear the [Tone] check box in the [Settings] tab and make the setting here.

Dark

Drag the slider to adjust the dark parts of the image. The larger the selected value, the darker the dark parts of the image. You can adjust the gradation to one of 129 values. The standard value is 0. The adjustable range is -64 to +64.

Light

Drag the slider to adjust the light parts of the image. The larger the selected value, the brighter the light parts of the image. You can adjust the gradation to one of 129 values. The standard value is 0. The adjustable range is -64 to +64.

Sharpness

Drag the slider to adjust the outline of the image. The larger the selected value, the sharper the edges of the image. You can adjust the gradation to one of 15 values. The standard value is 0. The adjustable range is 0 to 14.

Note

When the [Sharpness] check box in the [Settings] tab is selected, the printer setting is used.

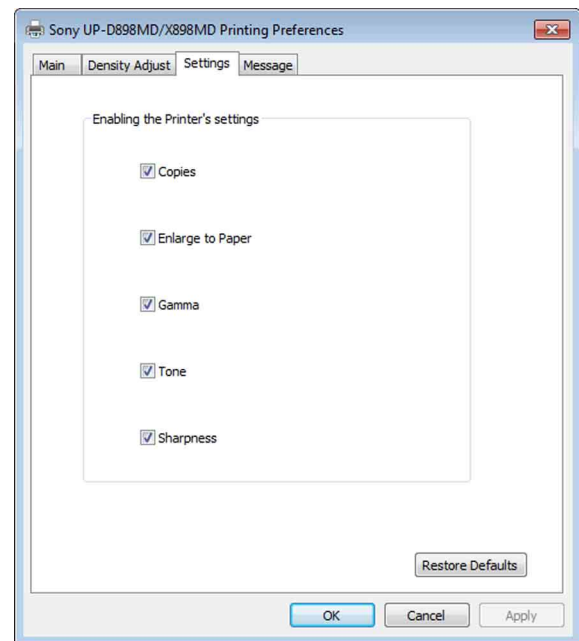
To use the printer driver setting, clear the [Sharpness] check box in the [Settings] tab and make the setting here.

Restore Defaults

Pressing the [Density Adjust] tab restores all settings to their default values.

[Settings] tab Settings

Select whether to use the printer setting or the printer driver setting for each item.



Copies

Select this check box to use the printer setting. Doing so also disables the [Copies] setting in the [Main] tab.

Clear this check box to use the [Copies] setting on the [Main] tab.

Enlarge to Paper

Select this check box to use the printer setting. Doing so also disables the [Enlarge to Paper] setting in the [Main] tab.

Clear this check box to use the [Enlarge to Paper] setting on the [Main] tab.

Gamma

Select this check box to use the printer setting. Doing so also disables the [GAMMA] setting in the [Density Adjust] tab.

Clear this check box to use the [GAMMA] setting on the [Density Adjust] tab.

Tone

Select this check box to use the printer setting. Doing so also disables the [Tone] setting in the [Density Adjust] tab.

Clear this check box to use the [Tone] setting on the [Density Adjust] tab.

Sharpness

Select this check box to use the printer setting. Doing so also disables the [Sharpness] setting in the [Density Adjust] tab.

Clear this check box to use the [Sharpness] setting on the [Density Adjust] tab.

Restore Defaults

Restores all settings in the [Settings] tab to their default condition.

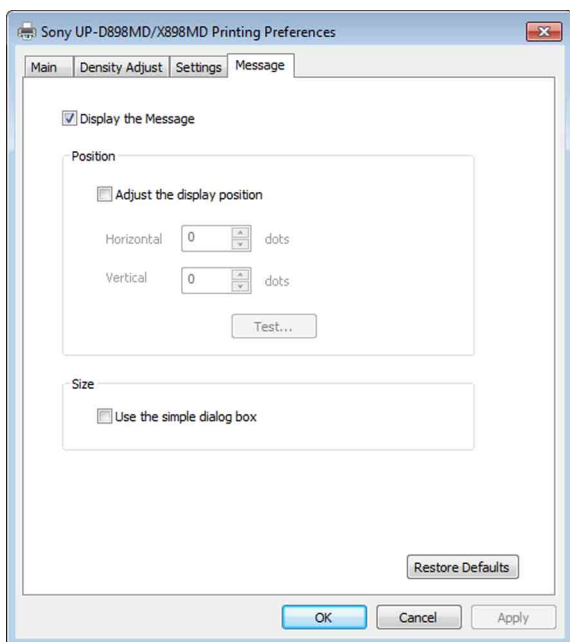
[Message] tab Settings

Sets the display settings related to message dialog boxes.

Message dialog boxes appear when the UP-D898MD/UP-X898MD error occurs, for example.

Message dialog boxes appear in two sizes; standard and small. The standard message dialog box displays the error status of the printer and instructions for dealing with the error. The small message dialog box displays (one sentence of) simple instructions for dealing with the error.

For details of each message, see “Message list” (page 8).



Display the Message

Set ON/OFF to show the message dialog box.

If this check box is OFF, you cannot set the other settings in the [Message] tab.

Adjust the Display Position

Select this check box to adjust the display position of message dialog boxes. The message dialog box appears in the position defined by the values specified in the [Horizontal] and [Vertical] settings.

Default setting: A check is not placed in [Adjust the Display Position]. (The standard message dialog box appears in the center of the display, and the small message dialog box appears in the top left of the display.)

Horizontal, Vertical

These settings are enabled when the [Adjust the Display Position] check box is selected. Enter the coordinates for the display position (position of the upper-left corner of the message dialog box).

The message dialog box appears in the position defined by the values specified here.

Test

Verify the position in which message dialog boxes appear on the display or screen. A test dialog box will appear in the position defined with the [Horizontal] and [Vertical] settings.

Use the Simple Dialog Box

Select this check box to display smaller size message dialog boxes.

Restore Defaults

Restores all settings in the [Message] tab to their default condition.

Message list

Displayable messages are as follows. Fix any issues, following the messages below. For further details on fixing issues, refer to the operating instructions for UP-D898MD/UP-X898MD in combination with this manual.

Standard message dialog box	Small message dialog box
No thermal paper. Please set the thermal paper. To continue printing, click "Retry." Windows will automatically retry after 5 seconds.	Set thermal paper.
Now, Feeding. Please wait. To continue printing, click "Retry." Windows will automatically retry after 5 seconds.	Please wait.
Door is open. Please close the door. To continue printing, click "Retry." Windows will automatically retry after 5 seconds.	Close door.
Now printing the video image. Please wait. To continue printing, click "Retry." Windows will automatically retry after 5 seconds.	Please wait.
Now regulating the head temperature of the printer. Please wait. To continue printing, click "Retry." Windows will automatically retry after 5 seconds.	Please wait.
Paper jam. Please remove the jammed paper. To continue printing, click "Retry." Windows will automatically retry after 5 seconds.	Remove jammed paper.
Paper jam. Printing is aborted. Please remove the jammed paper and print again.	Remove jammed paper.
Mechanical error. Printing has been aborted. Please turn off the printer, then turn it back on and print again.	Restart printer.
Printer is not ready. Make sure the printer is plugged in to a power source and the printer cable is correctly connected. To continue printing, click "Retry." Windows will automatically retry after 5 seconds.	Check printer.

Cautions for Use

Here describes the cautions for use.

Also, read the "Readme" file in which other cautions are described.

- Printing cannot be guaranteed if connecting the printer with a USB hub.
- Depending on the USB devices which you use at the same time, the unit may not perform correctly.
- Do not turn the unit off or remove the power cable within 2 or 3 seconds after finishing the print. The next print job may not perform normally.
- When [test] is performed in the printer property, overlapped characters may be printed. This is a normal result and not a malfunction.
- You cannot stop a print job while it is running.
- You may set the number of copies to a number greater than the printer's capacity via applications. However, do not set the number of copies to more than 10 copies.
- Operation of the printer cannot be guaranteed if the computer is put to sleep or put into standby while the printer is connected and turned on.
- When you adjust the message position, select the Windows classic setting in the computer screen setting. If not, the message position may shift.