

DX-TL5716E/DX-TL308E/DX-TL304E(EX)

# R

## Recording time table

### DX-TL5716E: Recording time table (Recording without audio)

This table shows approximate recording times (when data are recorded to the 250 GB HDD mounted on the recorder). The table shows estimates of recording times assuming that the settings of the picture quality and the FPS are same among all 16 cameras.

Picture size setting: CIF d: day, h: hour

Quality	FPS	25	12.5	6.25	3	1.5	0.8	0.4	0.2
L1		4d 5h	7d 19h	12d 19h	22d 20h	26d 14h	53d 8h	106d 8h	106d 10h
L2		3d 4h	6d 1h	10d 20h	19d 0h	26d 14h	53d 8h	106d 8h	106d 10h
L3		2d 20h	5d 3h	9d 2h	14d 23h	26d 10h	46d 23h	93d 21h	106d 10h
L4		2d 4h	4d 0h	6d 23h	11d 17h	20d 3h	35d 10h	70d 18h	106d 10h
L5		1d 17h	3d 2h	5d 13h	9d 5h	16d 0h	28d 10h	56d 19h	106d 10h
L6		1d 11h	2d 19h	4d 14h	7d 22h	13d 17h	23d 18h	47d 11h	95d 3h
L7		1d 6h	2d 6h	4d 0h	6d 16h	11d 13h	20d 10h	40d 19h	81d 19h
L8		1d 2h	2d 0h	3d 13h	5d 22h	10d 4h	17d 22h	35d 19h	71d 18h
L9		0d 23h	1d 18h	3d 4h	5d 5h	9d 0h	15d 22h	31d 20h	63d 20h

### DX-TL308E: Recording time table (Recording without audio)

This table shows approximate recording times (when data are recorded to the 250 GB HDD mounted on the recorder). The table shows estimates of recording times assuming that the settings of the picture quality and the FPS are same among all 8 cameras.

Picture size setting: CIF d: day, h: hour

Quality	FPS	25	12.5	6.25	3	1.5	0.8	0.4	0.2
L1		8d 10h	15d 15h	25d 15h	45d 17h	53d 9h	106d 12h	212d 17h	212d 20h
L2		6d 9h	12d 2h	21d 16h	38d 0h	53d 9h	106d 12h	212d 17h	212d 20h
L3		5d 17h	10d 7h	18d 4h	29d 22h	52d 21h	93d 23h	187d 18h	212d 20h
L4		4d 8h	8d 1h	13d 23h	23d 11h	40d 7h	70d 20h	141d 13h	212d 20h
L5		3d 11h	6d 5h	11d 3h	18d 11h	32d 1h	56d 21h	113d 15h	212d 20h
L6		2d 22h	5d 6h	9d 5h	15d 20h	27d 11h	47d 12h	94d 22h	190d 7h
L7		2d 12h	4d 12h	8d 0h	13d 9h	23d 2h	40d 20h	81d 14h	163d 14h
L8		2d 5h	4d 0h	7d 2h	11d 21h	20d 9h	35d 20h	71d 14h	143d 13h
L9		1d 23h	3d 13h	6d 9h	10d 10h	18d 0h	31d 21h	63d 16h	127d 17h

### DX-TL304E(EX): Recording time table (Recording without audio)

This table shows approximate recording times (when data are recorded to the 250 GB HDD mounted on the recorder). The table shows estimates of recording times assuming that the settings of the picture quality and the FPS are same among all 4 cameras.

Picture size setting: CIF d: day, h: hour

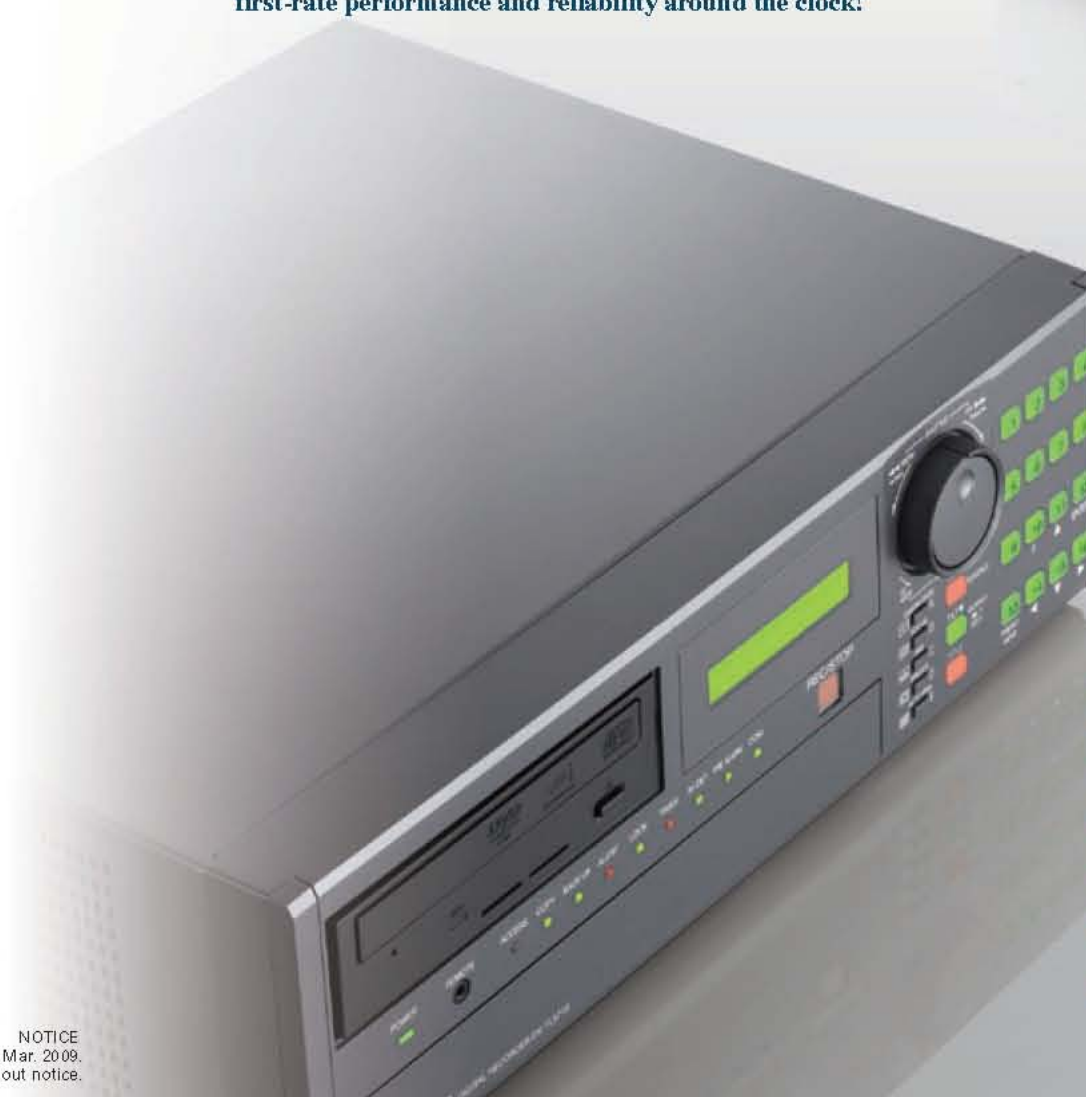
Quality	FPS	25	12.5	6.25	3	1.5	0.8	0.4	0.2
L1		16d 21h	31d 7h	51d 6h	91d 11h	106d 10h	213d 0h	425d 11h	425d 17h
L2		12d 19h	24d 4h	43d 9h	76d 1h	106d 10h	213d 0h	425d 11h	425d 17h
L3		11d 10h	20d 15h	36d 9h	59d 21h	105d 19h	187d 23h	375d 12h	425d 17h
L4		8d 17h	16d 2h	27d 23h	46d 23h	80d 14h	141d 17h	283d 2h	425d 17h
L5		6d 23h	12d 10h	22d 7h	36d 23h	64d 3h	113d 19h	227d 7h	425d 17h
L6		5d 20h	10d 13h	18d 11h	31d 16h	54d 23h	95d 0h	189d 20h	380d 15h
L7		5d 0h	9d 1h	16d 1h	26d 18h	46d 9h	81d 16h	163d 4h	327d 5h
L8		4d 10h	8d 0h	14d 5h	23d 18h	40d 19h	71d 16h	143d 5h	287d 3h
L9		3d 23h	7d 2h	12d 18h	20d 20h	36d 0h	63d 18h	127d 9h	255d 10h



KYOTO WORKS :1 ZUSHO BABA, NAGAOKAKYO CITY, KYOTO 617-8560, JAPAN PHONE: +81(0)75-958-3245 FAX: +81(0)75-958-3730

# Security Solutions

— Superlative picture quality, response, operating ease —  
Mitsubishi Electric security digital recorders play a key role in  
CCTV-based security systems, offering  
first-rate performance and reliability around the clock!



- H**igh performance: 400fps (25fps x 16ch)\*
- R**eal-time recording & live monitoring
- M**PEG-4 for extended recording times
- N**ew user-friendly interface for easy setup/operation
- C**onnect up to 16 recorders, 16 HDD extension unit each.\*
- P**OS/ATM transaction data recording

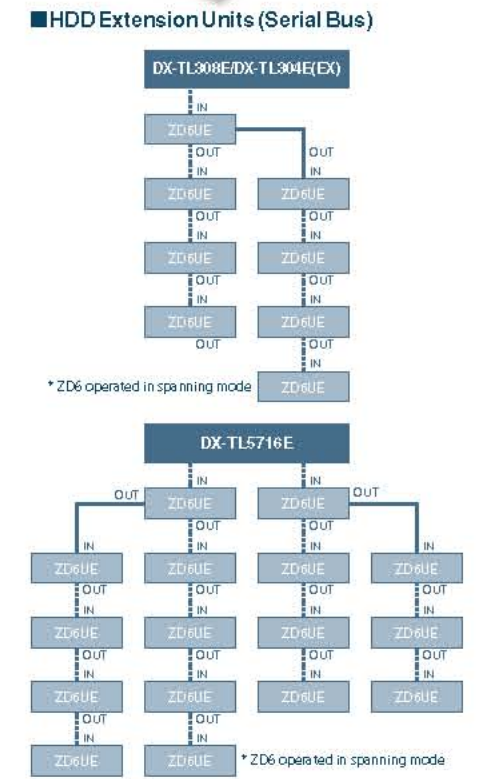
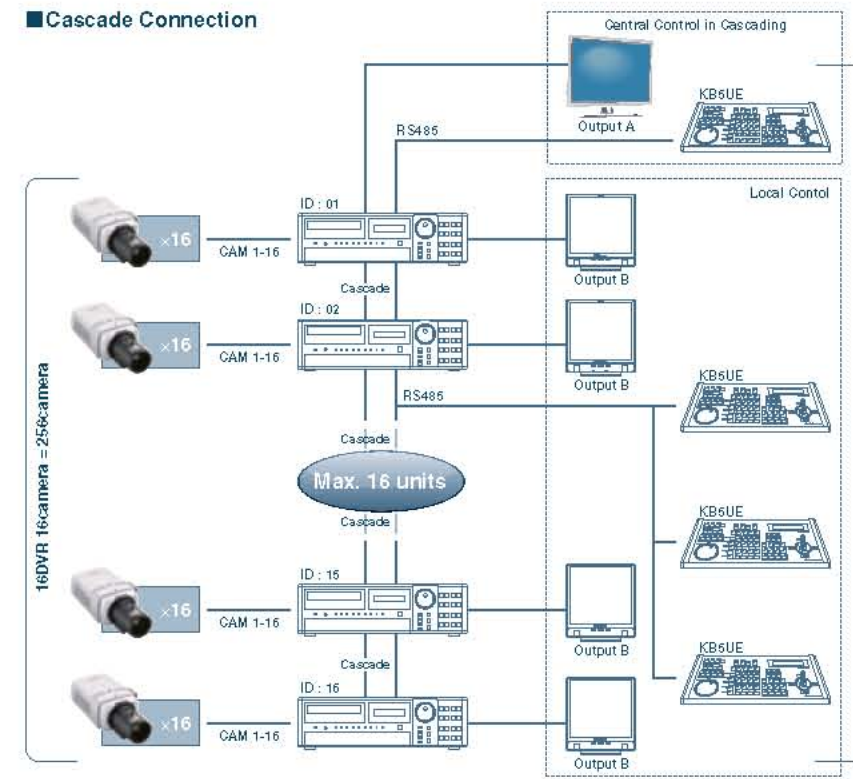
\*FD-21K

NOTICE  
New publication, effective Mar. 2009.  
Specifications subject to change without notice.

# Concept

With a sterling reputation as a reliable solution provider in the field of video surveillance, Mitsubishi Electric is the security digital recorder industry leader in Japan, outselling its competitors for the past 3 years. The market is expected to continue to expand in order to meet diversified user requirements, and this new series has been designed specifically to address those needs.

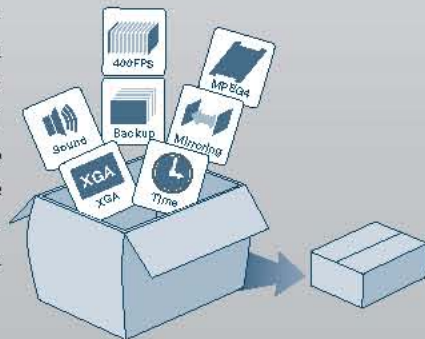
Offering unique flexibility, these security digital recorders can be connected to virtually any surveillance-related equipment. They will suit any facility, however large, and offer the critical benefits of 24/7 dependability, smooth multitasking, and a user-friendly interface.



## D ependability

### Reliable recording of everything from all cameras – 24/7

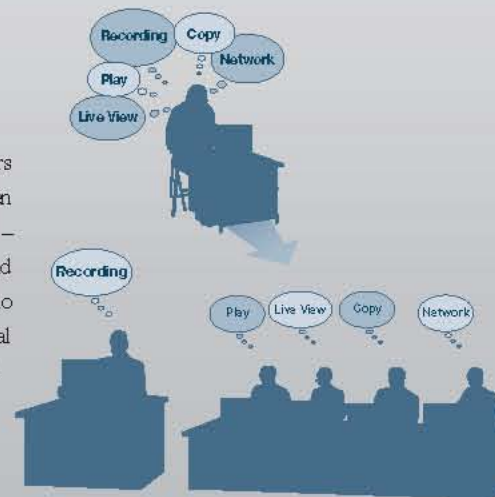
Cutting-edge MPEG-4 compression effectively halves data volume, doubling storage capacity and recording times. Combined with the high-capacity internal storage, this means you can record continuously for a year or more. And it's easy to expand storage even more using optional DX-ZD6UE HDD extension units, so you no longer have to fine-tune your setup and economize on storage by reducing picture size or resolution. And data dependability is further enhanced with such features as HDD mirroring.



## P erformance

### Effortless recording performance, stress-free operation

Mitsubishi Electric security digital recorders maintain high recording performance. Even when performing 5 different tasks simultaneously – monitoring, playback, recording, copying and transferring data over a LAN – there is no noticeable performance hit. What you get is real pictures, in real time. No waiting, no frustration.



## N ew user-friendly interface

### Less manual consultation, thanks to intuitive setup and operation

The newly designed GUI (graphical user interface) features large icons to ensure superb operating ease. Everything from basic setup and camera selection to playback, search, and copy can be performed simply using the mouse.



# Easy Setup & Operation

## New GUI

Thanks to intuitive operating ease, there is very little need to consult the manual, even when setting up a new system. Each screen is laid out for optimum clarity and convenience, with advice always at hand in the form of a Help button. The newly designed interface combines with familiar mouse operation to ensure that daily operations are completed quickly and efficiently.

## Easy Setup

### Front access

Up to 2 HDDs can be housed inside the recorder. No additional mounting kit is needed. Installing, replacing or removing an HDD is quick and easy thanks to quick access – the recorder does not even have to be removed from its rack since the front panel is easily removed.



### Easy setup

An automated wizard speeds you through the initial setup process, in which you synchronize the clock, and set up the HDDs and cameras. Recording setup too has been automated as much as possible. For example, if you specify the recording interval and period, recording quality will be set automatically. And your complete setup profile can be easily saved using external media.



## Easy Operation

### Various search functions

A wide range of search functions is provided for enhanced operating ease.

#### Time/date search

This makes use of the on-screen calendar.



Time/date search menu

#### Alarm list search

Emergency recordings in the alarm list can be searched, and up to 8 can be selected for batch copying to a disc or external storage.



Alarm list search menu

#### Motion-detect search

The operator is not limited to alarm recordings triggered by movement. Search criteria (sensitivity, area) can be set for specific locations so as to narrow down such motion searches.



Motion search menu

#### Bookmark search

If something needs further review, a bookmark can be added at that point by pressing the pause button; bookmark search enables the operator to jump back to that point for confirmation.



Bookmark search menu



### Mouse operation

Anyone can set up a system, and less training is required to operate it. All operations – including basic setup, camera selection, playback, search, and data copy – can be performed simply using the mouse. The most frequently used functions are grouped for instant access.



### On-screen help

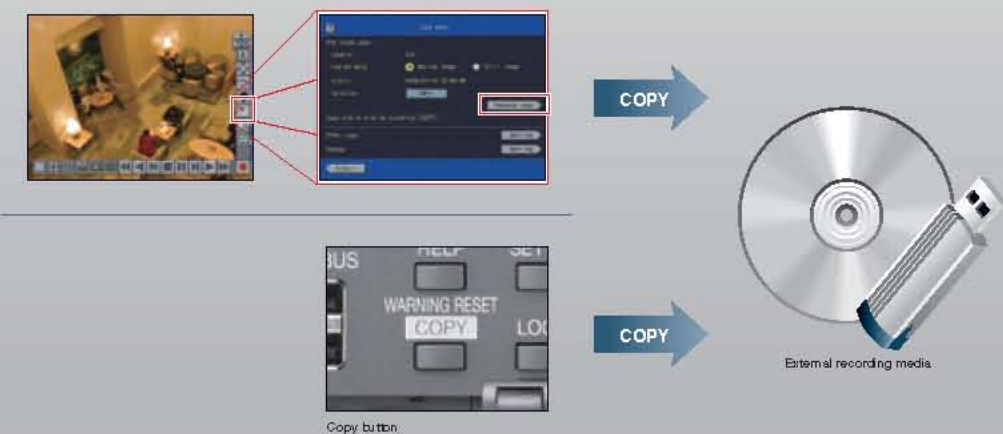
Clear instructions and advice are never more than a mouse-click away. That's because there is a Help button on almost every screen, ready to provide the answer to your question.



Help is always near at hand

### Simple copy/archive (Just two touch)

You can copy recorded data – as still images or video footage – to a DVD/CD disc or USB memory device. There's a simple copy button on the front panel and another available via on-screen menu, ready to duplicate any scene you like. Two presses on the button (or two clicks with the mouse) is all it takes, unless you want to change any settings.



# High Reliability

Mitsubishi Electric takes a comprehensive view of reliability. It includes the hardware – especially the hard disk drives (HDDs) – and maintenance features. On the software side, these security digital recorders are equipped for mirroring and spanning (user selectable), while encryption of the data helps to protect it. Moreover, central monitoring and recording of 16 high-quality video feeds is possible with just a single security digital recorder. Connected to a network, this can become the hub of a scalable system that offers the dual benefits of flexibility and reliability.

## Data Protection

### Mirroring

With the two internal HDDs set up in mirroring mode, all data is recorded simultaneously on both drives. This enhances reliability since even if one of the hard drives were to malfunction, your recorded images would still be safe. Separate and spanning (JBOD) modes are also available. Also, you can easily duplicate and back up data, using one of the internal HDDs as a backup drive.



### Sleep mode

With multiple hard drives (internal and external) connected, the system can automatically power down some of them when not in use. This reduces power consumption and helps to prolong equipment life. And so that no drive is switched off for more than 24 hours, it will be automatically powered up at least once a day at a preset time.



## Recording, Playback & Monitoring

### Real-time recording & live monitoring

Live camera footage (PAL) can be displayed at 25fps, equivalent to standard TV broadcasting.

### Multiplexer function

Up to 16 video feeds can be monitored simultaneously using a split-screen layout – with each recording at a full 25fps (CIF). This represents a system performance of 400 frames per second, without a single dropped frame.



### Triplex capability

Enables smooth real-time monitoring, recording and playback of recorded material – all at the same time. And dual multiplexer output means you can display camera footage on a second monitor.

### XGA output to PC monitor

An XGA terminal (D-sub 15-pin)\* is provided so that D1 images can be displayed at native resolution on a PC monitor. It is also possible to arrange for simultaneous A/B output display with a variety of split-display layouts to choose from.

\* Except DX-TL304E



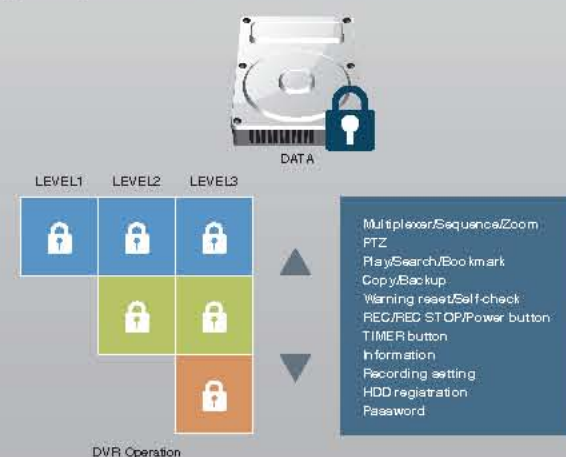
### Two-way audio

With a microphone and speakers connected to the security digital recorder, an operator can converse with someone at a remote site using a PC and the monitoring system network.



### Password

It is possible to set 4 different passwords: 3 regular operator levels and one that enables recorded data to be erased. At Level 3, it is possible to change an operator's level.



### Data tampering detection & data protection

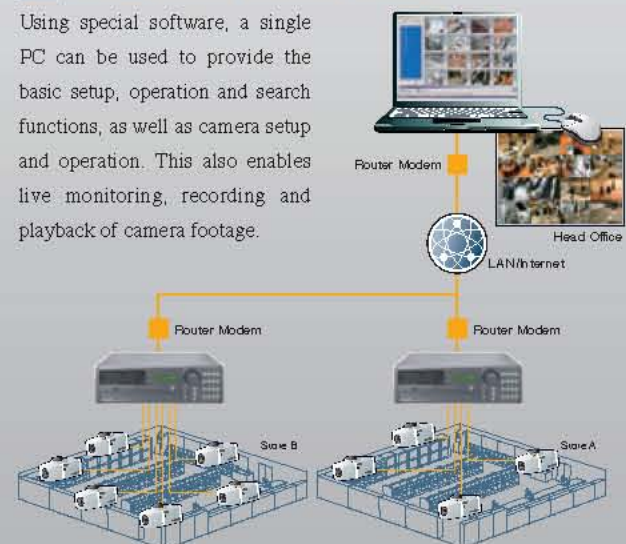
Hash codes, which are generated to ensure the integrity of recorded data, make it possible (during playback) to detect attempts to edit camera footage. The same is true of data imported from a CD or USB memory device. It is also possible to set data protection periods so that vital footage is not accidentally erased. Separate search and playback functions are provided for this data. And to ensure the protection of personal information, an appropriate period can be specified so that older footage cannot be displayed.



Detection of data tampering

### Central management system

Using special software, a single PC can be used to provide the basic setup, operation and search functions, as well as camera setup and operation. This also enables live monitoring, recording and playback of camera footage.



### Network-based monitoring & data transfers

Using a LAN, it is possible to create highly scalable monitoring systems.

- Alarm information and still (JPEG) images can be automatically transmitted as e-mail attachments\* to notify remote staff.
- On receipt of alarm notification, the alarm recording data can be uploaded to an FTP server enabling remote staff to see what is happening on site.
- Up to 15 PCs can be used to monitor a site using nothing more than standard web browser software (Internet Explorer 6.0 or later).
- The security digital recorder clock can be synchronized remotely using SNTP over TCP/IP. This makes it possible to ensure that all units in a multi-recorder system record the time accurately.

\* JPEG image attachments not available with the DX-TL304E(EX).

## Features & functions at a glance

	DX-TL5716E	DX-TL308E	DX-TL304E(EX)
No. of cameras/channels	16	8	4
Compression	MPEG-4	MPEG-4	MPEG-4
Internal HDD bays	2	2	2
DX-ZD6UE connectivity	Up to 16	Up to 8	Up to 8
DX-KB5UE connectivity	✓(RJ11)	✓(DB9)	✓(DB9)
DVD drive	Built-in	(External)	(External)
Max. recording rate (CIF)	400 frames/s	200 frames/s	100 frames/s
Display rate (live)	800 fields/s	400 fields/s	200 fields/s
Two-way audio	✓	✓	✓
TCP/IP connectivity	✓	✓	✓
PC software	✓	✓	✓
Web browser	✓	✓	✓
Cascade connectivity	✓	-	-
Vertical installation	-	✓	✓

## Options

### DX-ZD6UE HDD extension unit

The DX-ZD6UE offers a reliable way to increase storage capacity. Up to 16 can be connected to a single recorder, making use of all available storage modes, as well as the HDD sleep mode. You can also connect an extension unit directly to a PC for viewing the recorded data (with an additional viewer).



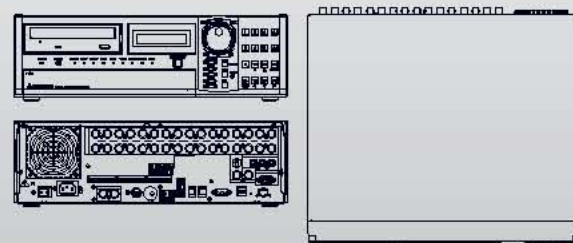
### DX-KB5UE DVR control keyboard

Complete with joy stick for PTZ control of dome cameras, LCD status display and jog/shuttle dial, the DX-KB5UE is a full-featured control keyboard designed for security professionals. Up to 4 keyboards can be used with any single system (1~16 recorders) for camera/recorder control.



## Dimensions

### DX-TL5716E



### DX-TL308E, DX-TL304E(EX)



## Specifications

Item	DX-TL5716E	DX-TL308E	DX-TL304E(EX)
<b>Colour System</b>	PAL	PAL	PAL
<b>Compression</b>	MPEG4	MPEG4	MPEG4
<b>Main Recording Device</b>	Serial-ATA HDD (max. 2 HDD bay)		
<b>Video</b>	Display rate 800 field/sec./display (50 field/ch)	400 field/sec./display (50 field/ch)	200 field/sec./display (50 field/ch)
		704 x 576 pixels : 4CIF 704 x 288 pixels : 2CIF 352 x 288 pixels : CIF	
<b>Audio</b>	Recording System In / Out	AD-PCM 1 (RCA) / 2 (RCA)	1 (RCA) / 2 (RCA)
<b>Recording</b>	Recording Rate (Guarantee) 400 frame/sec. (CIF)	200 frame/sec. (CIF)	100 frame/sec. (CIF)
	Alarm Pre-alarm Long Pre-alarm Emergency Power Failure Recovery Text	Yes Yes Yes Yes Yes Yes (RS-232C, for ATMP/OS)	
<b>Video Terminal</b>	In / Out Output A Output B XGA	16 (BNC) / 16 (BNC, Loop) 1 (BNC) / 1 (RCA) / 1 (S) 1 (BNC, Live only) 1 (DB15)	8 (BNC) / 8 (BNC, Loop) 1 (BNC) / 1 (RCA) 1 (BNC, Live only) 1 (DB15, only TL304E/EX)
<b>Main Language</b>	English, French, German, Spanish, Italian, Russian, Portuguese, Polish and Czech		
<b>Archiving</b>	DX-ZD6UE/DX-ZD6UE (Option) USB memory (copy only)		
	DVD/CD-drive (Built-in)	USB DVD/CD-drive (copy only)	
<b>Search</b>	Date & Time Alarm List Bookmark Motion Text	Yes Yes Yes Yes Yes	
<b>Multiplexer</b>	Split Sequential Covert Alarm Display	4, 9, 10, 13, 16 (output A/B) 1, 4, 9, 10, 13 (output A/B) 1 Yes Yes	4 (output A/B) 1, 4 (output A/B) Yes Yes
<b>Interface</b>	Inputs Outputs RS232C RS422/RS232C	16 (alarm), 1 (emergency), 3 (event) 16 (alarm), 4 (mode out), 1 (call out), DC12V 1 (DB9, for DVR control and ATMP/OS) 1 / 1 (2-wire, for PTZ control)	8 (alarm), 1 (emergency), 3 (event) 2 (mode out or alarm out), 1 (call out), DC12V 1 (DB9, for DVR control (ex. DX-KB5UE) and ATMP/OS) 1 / 1 (2-wire, for PTZ control)
	Serial BUS (Front / Rear) LAN	2 / 2 1 (RJ45, 10 Base-T/100 Base-TX)	2 / 1 1 (RJ45, 10 Base-T/100 Base-TX)
<b>Network</b>	Alarm notification E-mail Alarm FTP Notification Two-way audio Time Synchronization Web browser PC software	Yes Yes Yes Yes SNTP Yes Yes	Yes Yes (no attach a still image) Yes Yes SNTP Yes Yes
<b>Others</b>	TimerProgram Password Lock Motion Detection Protect Data Easy HDD replacing Tampered Image Detection Auto Expired Date	16 programs 3 levels + HDD protect 2 patterns (5 sensitivity) 500 positions Yes Mitsubishi Original (Hush) Yes	
<b>Power Supply</b>	Rated Input	AC100-240V 50/60Hz	0.7A-0.33A (100-240V)
<b>Operating Conditions</b>		0.9A-0.4A (100-240V)	Temperature: 5°C (41°F)-40°C (104°F) Humidity: 30-80%RH Altitude: 2,000m (Max.)
<b>Design</b>	Dimensions Weight	425(W) x 133(H) x 375(D) mm 9.7kg (without HDD)	300(W) x 91(H) x 340(D) mm 5.7kg (without HDD)
<b>Options</b>	DX-ZD6UE DX-ZD6UE DX-KB5UE Mouse	Yes (max.8 units, Serial Bus) Yes (max.16 units, Serial Bus) Yes (max. 4 units, RJ11) Yes (not included in the box)	Yes (max.4 units, Serial Bus) Yes (max.8 units, Serial Bus) Yes (RS232C, DB9) Yes (not included in the box)
<b>Accessories</b>	AC power cord Installer's manual User's manual other	2 (UK and Continental plugs) English (please contact our local branches for another language) User's manual (English, French, German, Spanish, Italian and Russian) * Safety notice is described by also Portuguese, Dutch, Swedish, Czech and Polish RS232C Operation Manual	

\* Except DX-TL304E(EX)

## Features & functions at a glance

	DX-TL5716E	DX-TL308E	DX-TL304E(EX)
No. of cameras/channels	16	8	4
Compression	MPEG-4	MPEG-4	MPEG-4
Internal HDD bays	2	2	2
DX-ZD6UE connectivity	Up to 16	Up to 8	Up to 8
DX-KB5UE connectivity	✓(RJ11)	✓(DB9)	✓(DB9)
DVD drive	Built-in	(External)	(External)
Max. recording rate (CIF)	400 frames/s	200 frames/s	100 frames/s
Display rate (live)	800 fields/s	400 fields/s	200 fields/s
Two-way audio	✓	✓	✓
TCP/IP connectivity	✓	✓	✓
PC software	✓	✓	✓
Web browser	✓	✓	✓
Cascade connectivity	✓	-	-
Vertical installation	-	✓	✓

## Options

### DX-ZD6UE HDD extension unit

The DX-ZD6UE offers a reliable way to increase storage capacity. Up to 16 can be connected to a single recorder, making use of all available storage modes, as well as the HDD sleep mode. You can also connect an extension unit directly to a PC for viewing the recorded data (with an additional viewer).



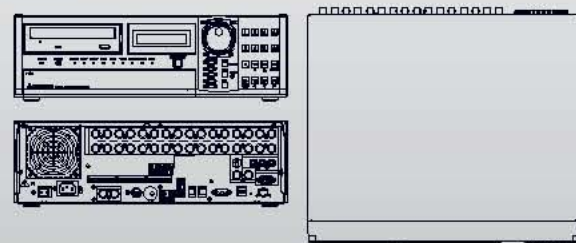
### DX-KB5UE DVR control keyboard

Complete with joy stick for PTZ control of dome cameras, LCD status display and jog/shuttle dial, the DX-KB5UE is a full-featured control keyboard designed for security professionals. Up to 4 keyboards can be used with any single system (1~16 recorders) for camera/recorder control.



## Dimensions

### DX-TL5716E



### DX-TL308E, DX-TL304E(EX)



## Specifications

Item	DX-TL5716E	DX-TL308E	DX-TL304E(EX)	
<b>Colour System</b>	PAL	PAL	PAL	
<b>Compression</b>	MPEG4	MPEG4	MPEG4	
<b>Main Recording Device</b>	Serial-ATA HDD (max. 2 HDD bay)			
<b>Video</b>	Display rate 800 field/sec./display (50 field/ch)	400 field/sec./display (50 field/ch)	200 field/sec./display (50 field/ch)	
		704 x 576 pixels : 4CIF 704 x 288 pixels : 2CIF 352 x 288 pixels : CIF		
<b>Audio</b>	Recording System In / Out	AD-PCM 1 (RCA) / 2 (RCA)	1 (RCA) / 2 (RCA)	
<b>Recording</b>	Recording Rate (Guarantee) 400 frame/sec. (CIF)	200 frame/sec. (CIF)	100 frame/sec. (CIF)	
	Alarm Pre-alarm Long Pre-alarm Emergency Power Failure Recovery	Yes Yes Yes Yes Yes	Yes Yes Yes Yes Yes	
	Text	Yes (RS-232C, for ATMP/OS)		
<b>Video Terminal</b>	In / Out Output A Output B XGA	16 (BNC) / 16 (BNC, Loop) 1 (BNC) / 1 (RCA) / 1 (S) 1 (BNC, Live only) 1 (DB15)	8 (BNC) / 8 (BNC, Loop) 1 (BNC) / 1 (RCA) 1 (BNC, Live only) 1 (DB15), only TL304E(X)	
<b>Main Language</b>	English, French, German, Spanish, Italian, Russian, Portuguese, Polish and Czech			
<b>Archiving</b>	DX-ZD6UE/DX-ZD6UE (Option) USB memory (copy only)			
	DVD/CD-drive (Built-in)	USB DVD/CD-drive (copy only)		
<b>Search</b>	Date & Time Alarm List Bookmark Motion Text	Yes Yes Yes Yes Yes		
<b>Multiplexer</b>	Split Sequential Covert Alarm Display	4, 9, 10, 13, 16 (output A/B) 1, 4, 9, 10, 13 (output A/B) 1 Yes Yes	4, 9 (output A/B) 1, 4 (output A/B) Yes Yes	
<b>Interface</b>	Inputs Outputs RS232C RS422/RS232C	16 (alarm), 1 (emergency), 3 (event) 16 (alarm), 4 (mode out), 1 (call out), DC12V 1 (DB9, for DVR control and ATMP/OS) 1 / 1 (2-wire, for PTZ control)	8 (alarm), 1 (emergency), 3 (event) 2 (mode out or alarm out), 1 (call out), DC12V 1 (DB9, for DVR control (ex. DX-KB5UE) and ATMP/OS) 1 / 1 (2-wire, for PTZ control)	
	Serial BUS (Front / Rear) LAN	2 / 2 1 (RJ45, 10 Base-T/100 Base-TX)	2 / 1 1 (RJ45, 10 Base-T/100 Base-TX)	
<b>Network</b>	Alarm notification E-mail Alarm FTP Notification Two-way audio Time Synchronization Web browser PC software	Yes Yes Yes Yes SNTP Yes Yes	Yes Yes (no attach a still image) Yes Yes SNTP Yes Yes	
<b>Others</b>	TimerProgram Password Lock Motion Detection Protect Data Easy HDD replacing Tampered Image Detection Auto Expired Date	16 programs 3 levels + HDD protect 2 patterns (5 sensitivity) 500 positions Yes Mitsubishi Original (Hush) Yes	16 programs 3 levels + HDD protect 2 patterns (5 sensitivity) 500 positions Yes Mitsubishi Original (Hush) Yes	
<b>Power Supply</b>	Rated Input	AC100-240V 50/60Hz	0.7A-0.33A (100-240V)	
<b>Operating Conditions</b>		0.9A-0.4A (100-240V)	0.7A-0.33A (100-240V)	
		Temperature: 5°C (41°F)-40°C (104°F) Humidity: 30-80%RH Altitude: 2,000m (Max.)		
<b>Design</b>	Dimensions Weight	425(W) x 133(H) x 375(D) mm 9.7kg (without HDD)	300(W) x 91(H) x 340(D) mm 5.7kg (without HDD)	
<b>Options</b>	DX-ZD6UE DX-ZD6UE DX-KB5UE Mouse	Yes (max.8 units, Serial Bus) Yes (max.16 units, Serial Bus) Yes (max. 4 units, RJ11) Yes (not included in the box)	Yes (max.4 units, Serial Bus) Yes (max.8 units, Serial Bus) Yes (RS232C, DB9) Yes (not included in the box)	
<b>Accessories</b>	AC power cord Installer's manual User's manual other	2 (UK and Continental plugs) English (please contact our local branches for another language) User's manual (English, French, German, Spanish, Italian and Russian) * Safety notice is described by also Portuguese, Dutch, Swedish, Czech and Polish RS232C Operation Manual		

\* Except DX-TL304E(EX)