

User manual



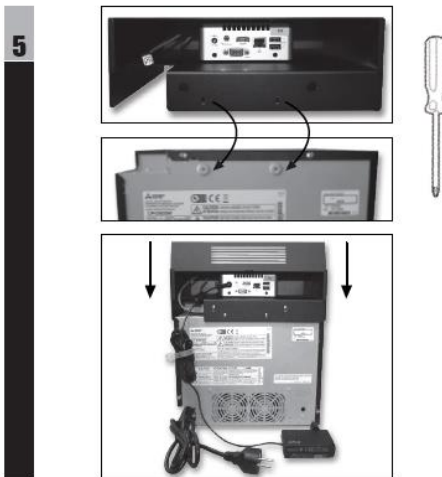
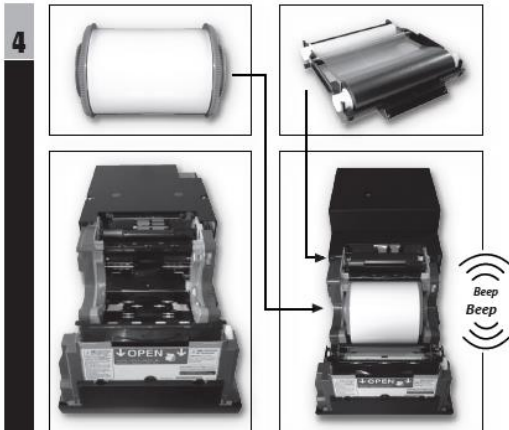
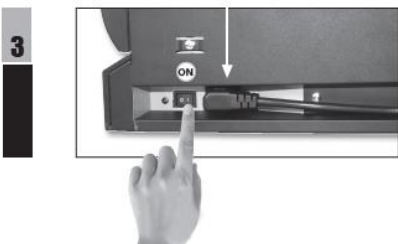
V1.2

Get Started with the SmartPhotoPrinter



- 1 Unboxing and installing the SmartPhotoPrinter
- 2 Connect your Smartphone to the SmartPhotoPrinter ... and print.

1 Unboxing and installing the SmartPhotoPrinter 1/3



1 Unboxing and installing the SmartPhotoPrinter 2/3

- 1 SmartPhotoPrinter package: The box on top contains the paper tray, the mini computer and the necessary accessories to mount it and connect it to the printer. The box on bottom contains the printer.
- 2 Detail of the boxes' contents
- 3 Connect the printer to the AC power and switch it ON.
- 4 Load ink ribbon and paper
- 5 Mount the SMART-D90EV (NUC and plate) on the top of printer. Attach the SMART-D90EV connecting the USB cable to the printer and use two supplied screws to hold it.
- 6 Mount the paper tray on the front of printer and hold it on left and right printer side using both screws supplied with the SMART-D90EV.
- 7 Connect the AC power adaptor to the AC power and switch it ON.

1 Unboxing and installing the SmartPhotoPrinter 3/3

8 Printed out after the SmartPhotoPrinter is started for the first time.



Get started...

- 1 **Connect your Smartphone to the SmartPhotoPrinter:**
Go to WiFi settings and select "[#PhotoPrint](#)" network.
- 2 If the browser is not launched automatically, then, open your browser manually (Chrome, Safari, ...) and type: <http://photoprint.lan>
- 3 To change settings or customize your SmartPhotoPrinter, open your Smartphone browser and type: <http://192.168.110.1/maintenance/admin>
 - User: admin
 - Password: admin

More information at <http://www.mitsubishielectric-printing.com>



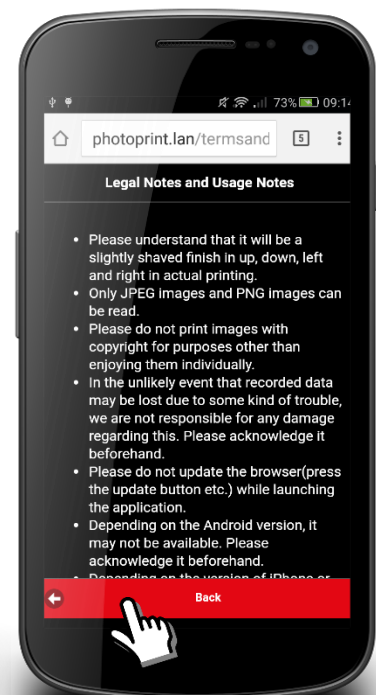
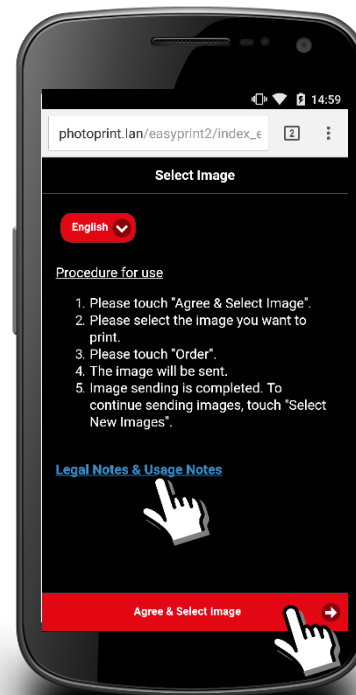
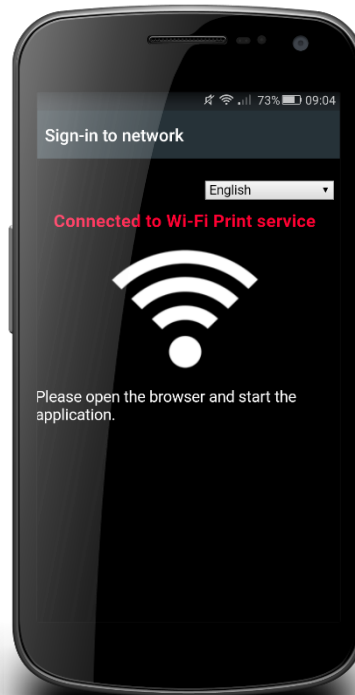
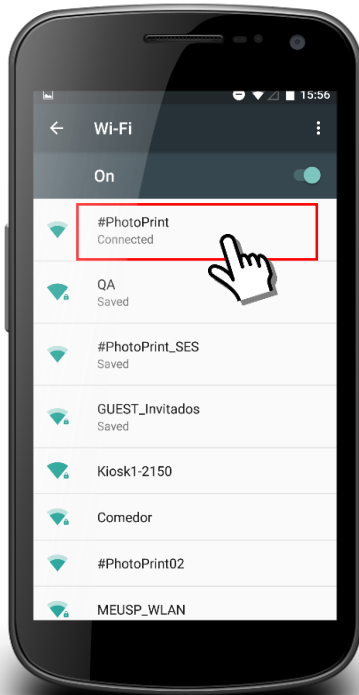
2 Connect your Smartphone to the SmartPhotoPrinter ... and print 1/2.

1

Go to the WiFi settings of your SmartPhotoPrinter and select the **"#PhotoPrint"** network.

2

If the browser is not launched automatically, then, open your browser manually (Chrome, Safari, ...) and type: <http://photoprint.lan> . For the first time that the device is connected to the SmartPhotoPrinter, read the Legal Notes & Usage Notes. A new page is displayed with the information.
Read it and click the Back button at the bottom of the page.
Then, "Agree & Select image".



2 Connect your Smartphone to the SmartPhotoPrinter ... and print 2/2.

3

Choose the action:

- Camera to take a picture and print:
- Documents to print an image from your SmartPhone.

4

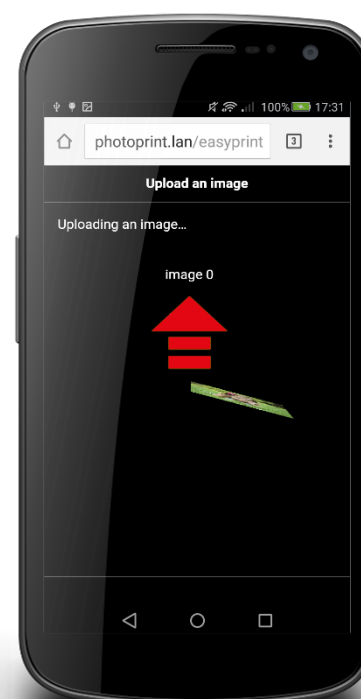
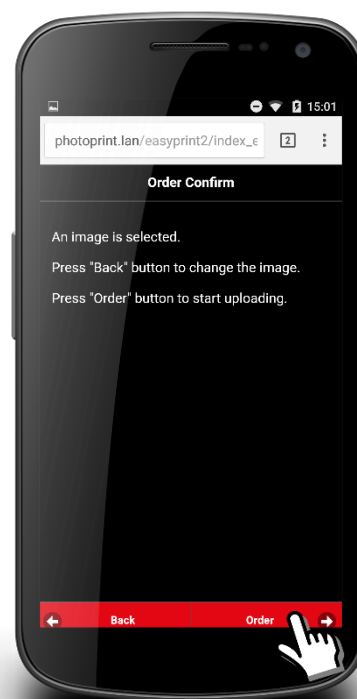
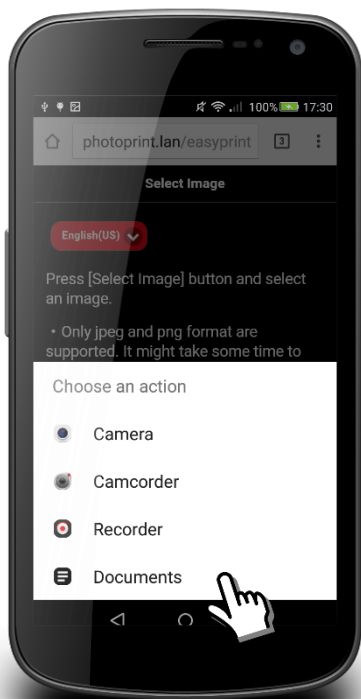
Select the image.

5

Click "order" to confirm and print.

6

The image is sent to be printed out



- <http://www.mitsubishielectric-printing.com>
- <http://www.messec.net>