

LUT update and ICC Profile Installation for HG media [CP-W5000DW]

14-Apr.-2021

Overview

To use HG media, you can select the following two ways of color setting.

Select Method 1 or Method 2 as you prefer.

| | Feature | Color settings | | |
|----------|--|---------------------------|--------------------------|-------------------------------------|
| | | LUT | ICC Profile | Color conversion in driver settings |
| Method 1 | The color impression is similar to the previous (non HG) media | update (See Section 2) | Not Apply | Enable (See Section 4) |
| Method 2 | The color impression is similar to the monitor | update (See Section 2) | Apply (See Section 3) | Disable (See Section 3) |

1. Preparation and confirmation in advance

| | Contents |
|---|--|
| 1 | You must be logged in as an administrator on the PC to be installed. |
| 2 | The driver for CP-W5000DW must be already installed on the PC. The driver's URL: https://www.mitsubishielectric.co.jp/ldg/ja/visual/products/printer/photo/download_01_english.html |
| 3 | Download LUT and ICC profile from the URL above. You can download it from the following location on the linked page. "FIRMWARE/ICC PROFILE DOWNLOAD(Ver.English)" -> "Firmware/ICC Profile" The file structures are shown in Fig. 1. 1 <div style="text-align: center;">Fig 1. 1</div> <div style="border: 1px solid black; padding: 5px;"> <div style="display: flex; justify-content: space-between;"> <div> CPW5000_Tool_LUTDLV100_ICCforHG <ul style="list-style-type: none"> └ CPW5000DW_HG.icc └ LUT update and ICC Profile Installation for HG media.pdf (This document) └ PrinterUpdateToolCPW5000DW_EN_20210405.pdf └ CPW5000_Tool_LUTDLV100_20210408.zip </div> <div> <ul style="list-style-type: none"> └ DLCPW5000LUT_Ver100.exe └ MUsbXpif.dll </div> </div> </div> |

2. LUT update

Follow the instructions below to download the LUT to your printer.

PrinterUpdateToolCPW5000DW_EN_20210405.pdf

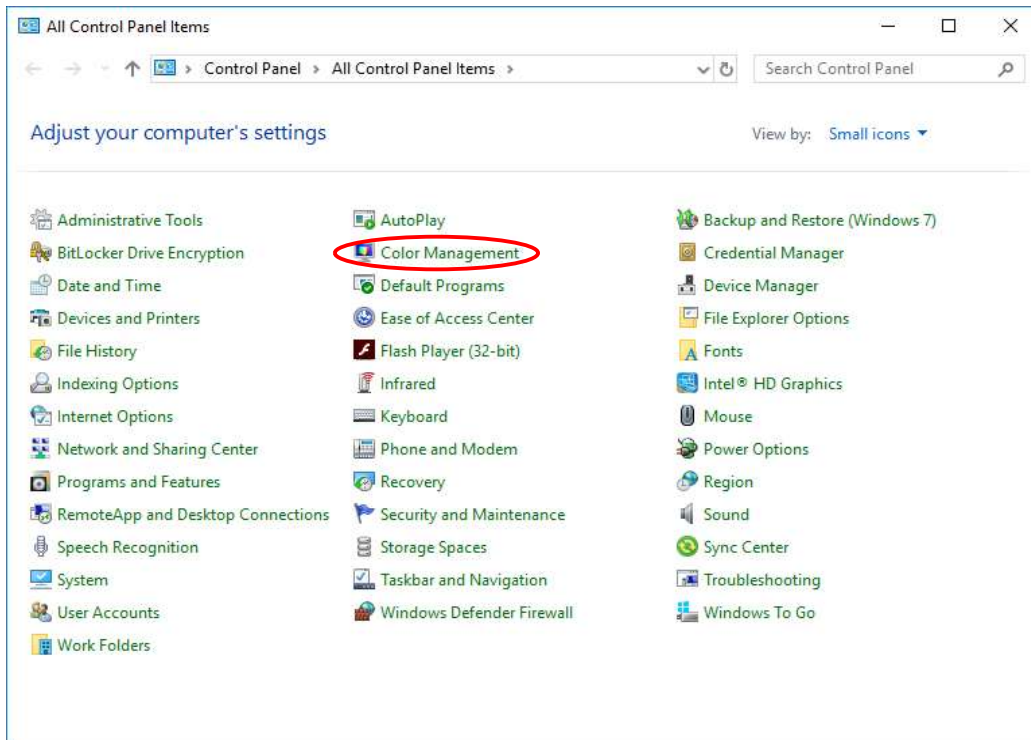
(Note : The downloader can only be used on Windows PC.)

3. ICC Profile Installation Procedure

3.1 For Windows OS

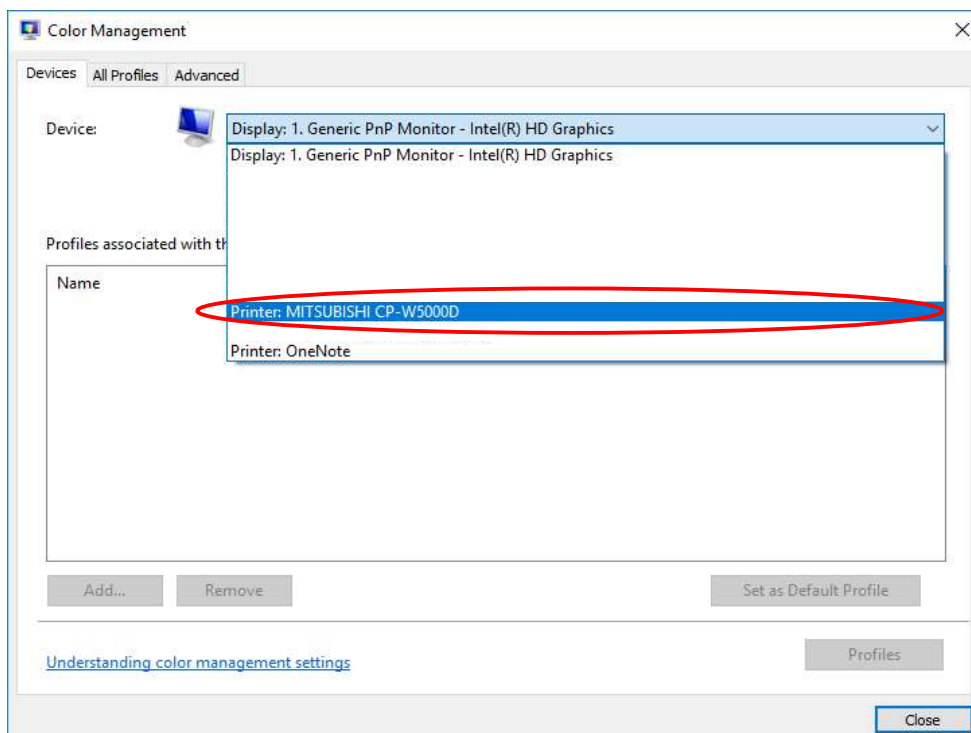
| | CONTENTS (The captured screen is an example of Windows 10.) |
|---|---|
| 1 | Open the following folder. C:\Windows\System32\spool\drivers\color |
| 2 | Copy and place the ICC profile (CPW5000DW_HG.icc) downloaded from the website into the above folder. |
| 3 | Connect the ICC profile. Please follow the steps below. Open the Control Panel and select the "Color Management" icon to open it. (Fig. 3. 1. 1) |

Fig. 3. 1. 1



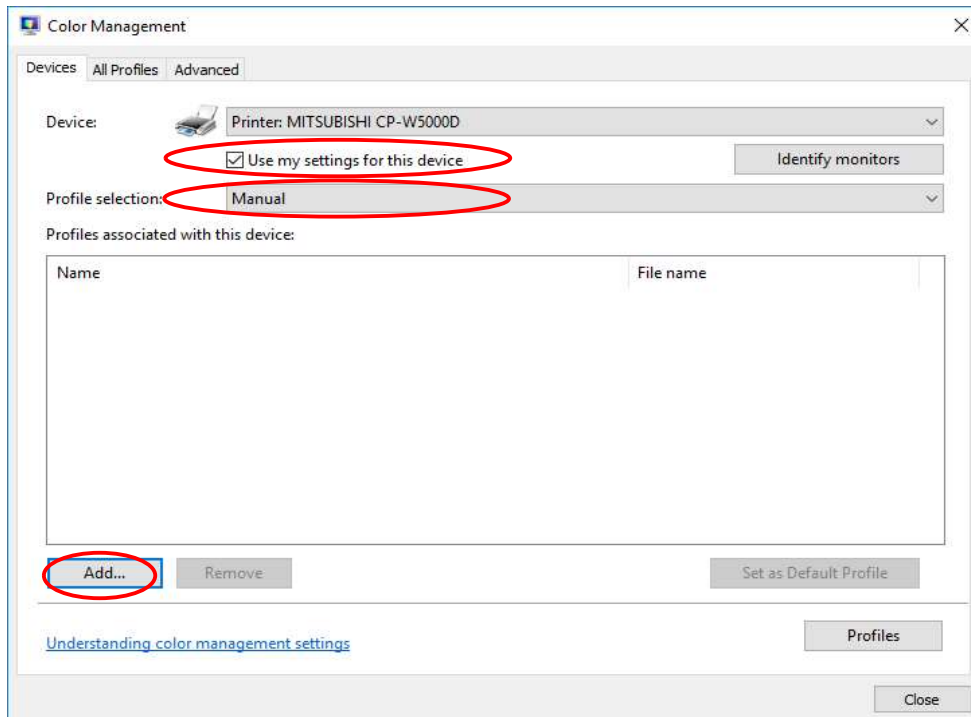
Select CP-W5000DW from the pull-down menu in the Devices tab. (Fig. 3. 1. 2)

Fig. 3. 1. 2



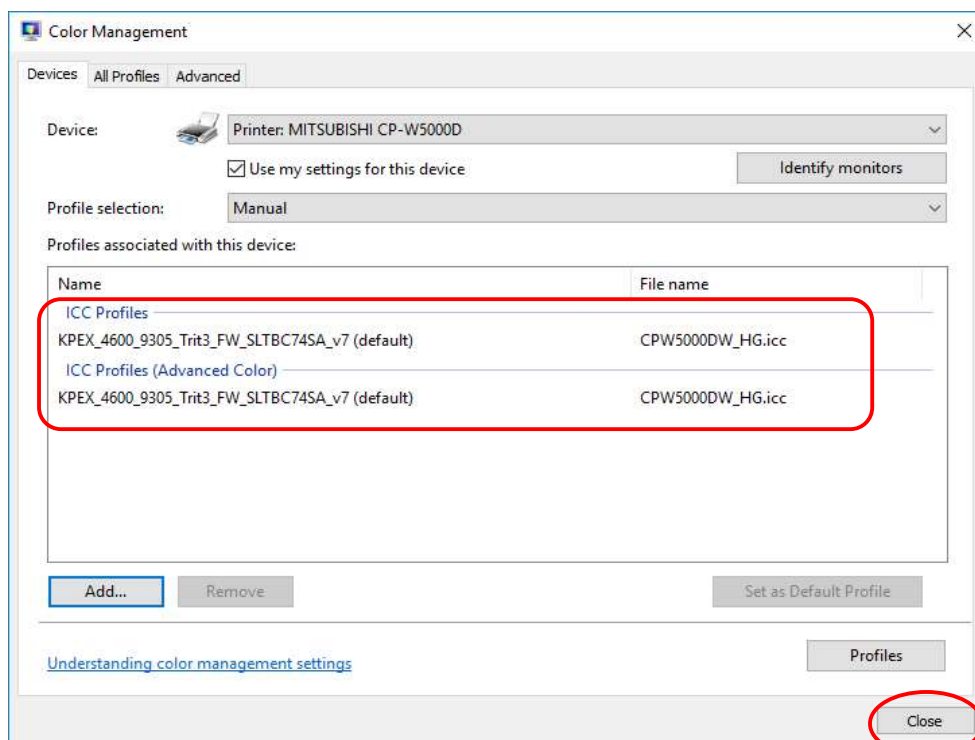
Check the "Use my settings for this device" checkbox, and then
Select "Manual" for the profile selection and click the "Add" button in the lower left corner (Fig. 3. 1. 3).

Fig. 3. 1. 3



Select the ICC Profile (CPW5000DW_HG.icc) to be applied.
Confirm the file name and click "Close" at the bottom right of the screen. (Fig. 3. 1. 4)

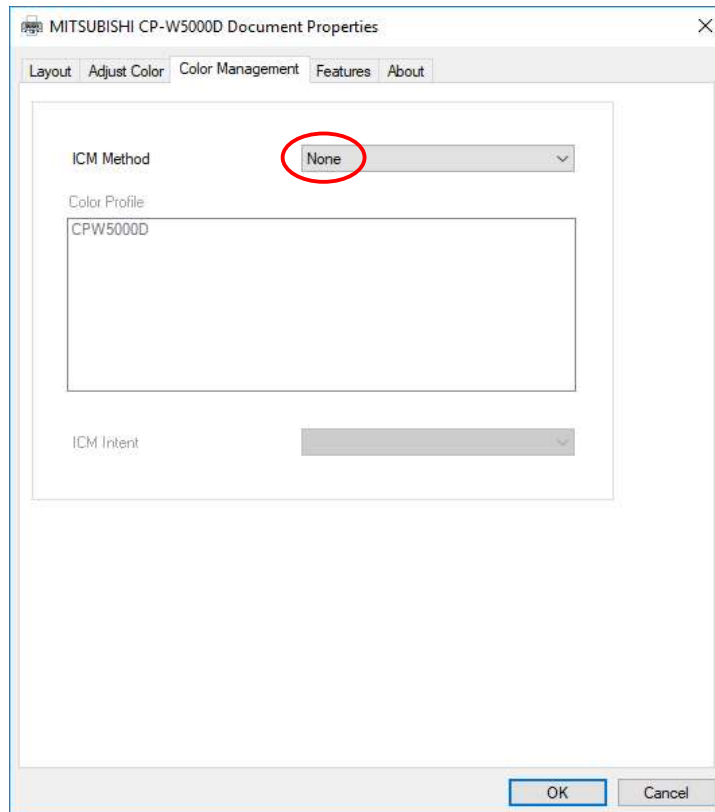
Fig. 3. 1. 4



4 The driver's 2(two) color management settings should be as follows. (Fig.3. 1. 5 and Fig. 3. 1. 6)

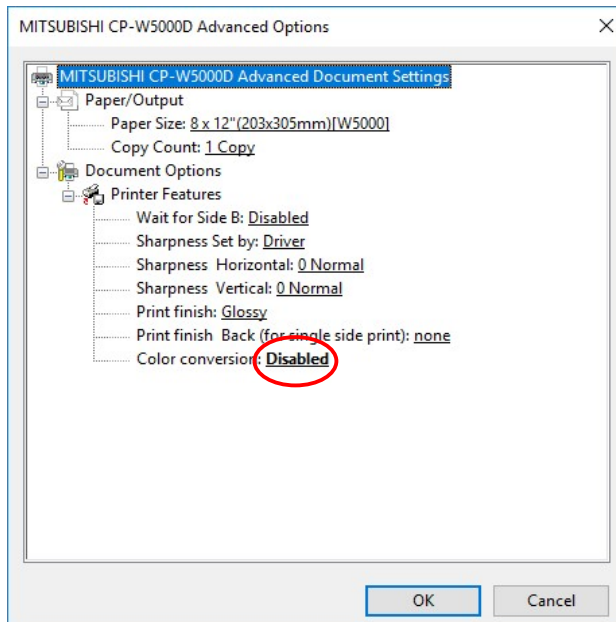
"Color Management" -> ICM Method : None

Fig. 3. 1. 5



"Layout" -> "Advanced Options" -> Color conversion : Disabled

Fig. 3. 1. 6



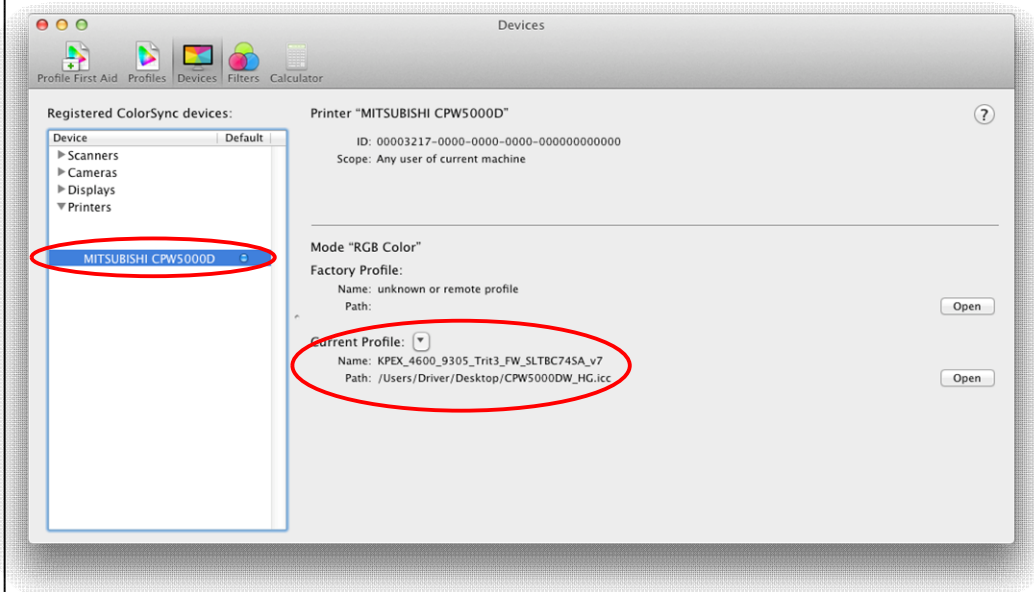
5 As a result of the above, the added profile will be applied to the final print.

3. 2 For Mac OS

CONTENTS (The captured screen is an example of Mac OS Version 10.7.5.)

- 1 Open your Mac's Color Sync application and select MITSUBISHI CPW5000D.
Click the icon next to "Current Profile" and select "Other".
Select ICC Profile of CP-W5000DW. (Fig. 3. 2. 1)

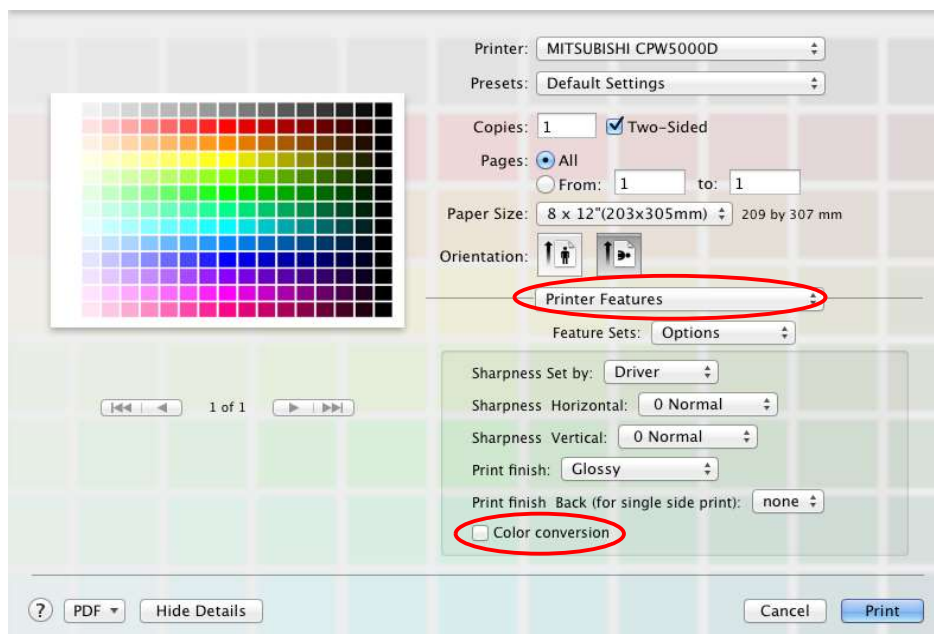
Fig. 3. 2. 1



Open the image to print with ColorSync Utility.

- Select "Printer Features" and Uncheck the check box of "Color conversion". (Fig. 3. 2. 2)

Fig. 3. 2. 2



- 2 As a result of the above, the added profile will be applied to the final print.

4. Appendix

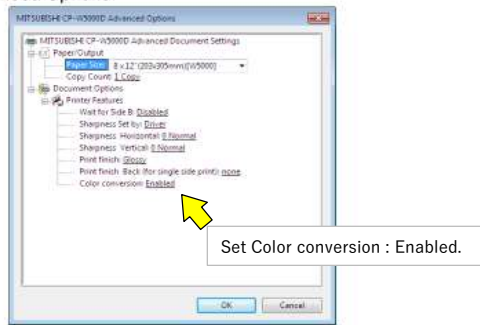
The location of "Color conversion" is shown below.

4. 1 For Windows OS

Please refer to CPW5000DriverGuideE_V101.pdf

Function explanation (page 6) -> 2. Advanced Options (Fig.13)

2. Advanced Options



<Fig. 13 Advanced Options dialog (Windows 7)>

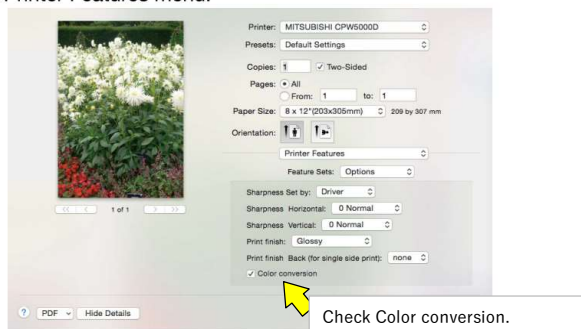
4. 2 For Mac OS

Please refer to CP-W5000_Mac_V100_EN_150421.pdf

Function explanation (page 6) -> 1. 2. Printer Features menu (Fig.14)

1.2. Printer Features menu

The following settings can be configured when "Feature Sets" of "Printer Features" is set to "Options" in the Printer Features menu.



<Fig.14 Printer Features menu>