

Installation of the printer driver to Mac OS from 10.8 to 10.10

Mac OS 10.5/10.6/10.7 printer drivers for Mitsubishi digital printers works with Mac OS from 10.8 to 10.10.

The following correspondence may be necessary at the time of installation to Mac OS from 10.8 to 10.10.

Please install according to follows.

*Although the screen of the display is an installation screen of the CP-D70DW printer, operation is the same also by this printer.

*Mac OS are trademarks of Apple Inc.

1. When attempting to install the Max OS X driver downloaded from web site

At the time of installation the message window as shown in right (Fig.1) may appear.

In this case, click "OK" button on this window and follow the steps below.



Fig.1

1) Click the installer package while holding Control key.

2) Click "Open" on the context menu (Fig.2).

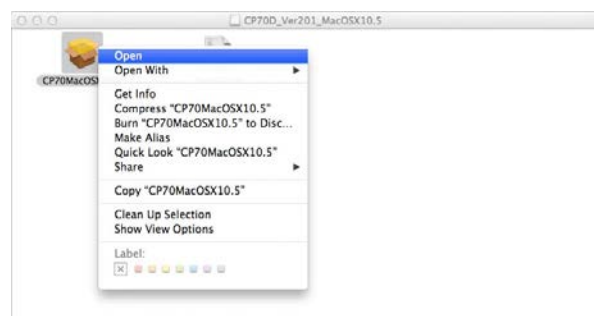


Fig.2

3) Click "Open" button on the message windows. (Fig.3).

Installation will start.

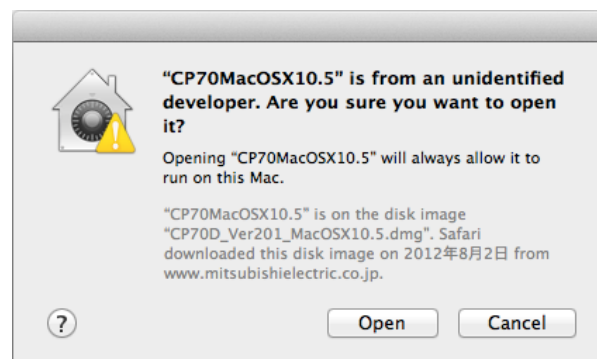


Fig.3

2. About operation after the installation completion of the driver

After the installation completion of the driver, please operate follows.

1) After completion of the driver installation, open "System Preferences" and select "Print & Scan".

2) Select the installed printer in the printer list and click "Open Print Queue..." button.

3) Click "Repair" button (Fig.4).

The Printer becomes available.

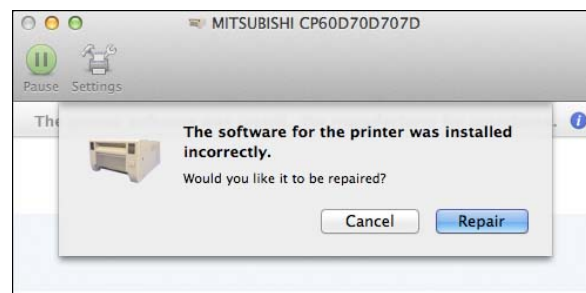


Fig.4