

## **PRINTER DRIVER GUIDE**

### **(CPD9550V Ver. 2.30)**

Microsoft, Windows and Windows 7 are either registered trademarks or trademarks of Microsoft Corporation in the United States and/or other countries.

Adobe, Adobe Photoshop are registered trademarks of Adobe Systems.

The various software packages mentioned in this manual are the registered trademarks of their respective companies.

Refer to the following web site to check the latest version of the printer driver.

<http://www.MitsubishiElectric.co.jp/vcp/>

Use the printer driver corresponding to the operating system.

CPD9550V : Windows 7 (32-bit,64-bit)

#### **<System requirements>**

Computer : Computer equipped with Pentium class CPU or more

Main storage memory : 512 Mbytes or more

Hard disk : Empty capacity 512 Mbytes or more

USB cable : Be sure to use a cable 2m or shorter.

Please meet the system requirement for Windows 7.

#### **Interface**

\*1:CP9550DW supports the USB 2.0 (Hi-Speed USB) interface.

As USB 2.0 is completely upwardly compatible with USB 1.1, CP9550DW can be connected with a personal computer on which USB1.1 interface is available.

When you use CP9550DW with USB 2.0 (Hi-Speed USB), the personal computer has to support USB 2.0 (Hi-Speed USB).

For the compatibility of the personal computer with USB 2.0 (Hi-Speed USB), ask the manufacturer of the personal computer.

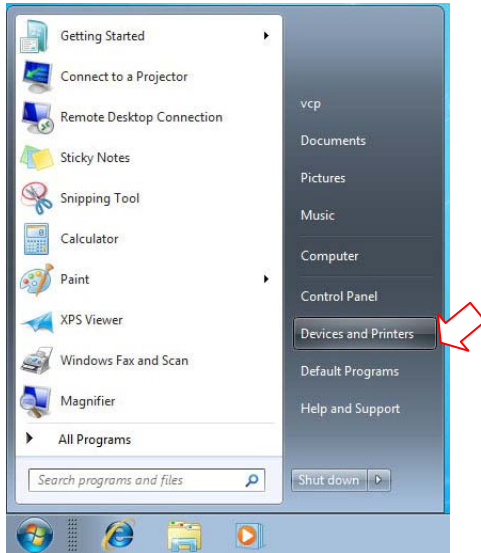
## <Installation>

### 1. ADD PRINTER DRIVER

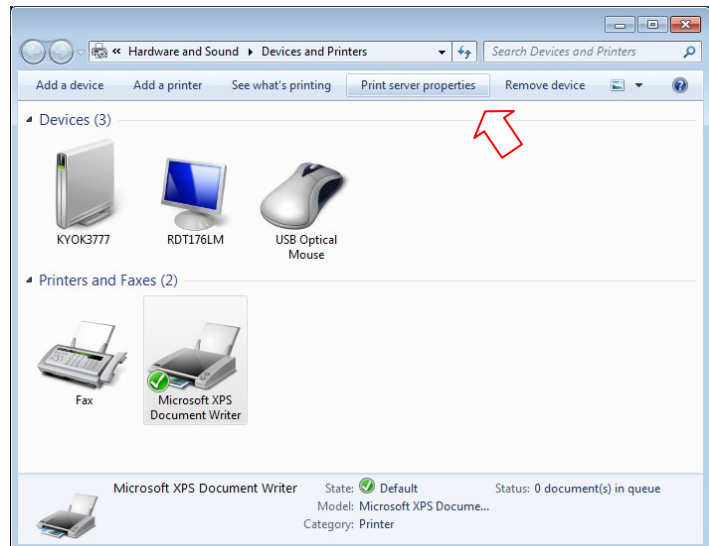
NOTE : Do not yet connect the printer to your PC.

If the printer is already connected to a computer via USB, proceed to section 2. UPDATE PRINTER DRIVER.

- 1) Click Start button and select “Devices and Printers” from Start Menu. <Fig. 1>
- 2) In “Devices and Printers” window, while any of icon listed under “Printers and Faxes” is selected, click “Print server properties” <Fig. 2>

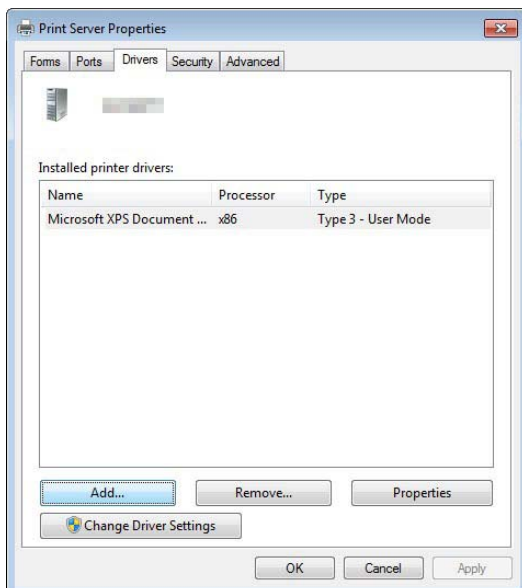


<Fig.1>



<Fig.2>

- 3) Open “Drivers” tab of “Print Server Properties”, and click “Add...” button. <Fig.3>
- 4) Click “Next>” button on “Welcome to the Add Printer Driver Wizard” <Fig.4 >

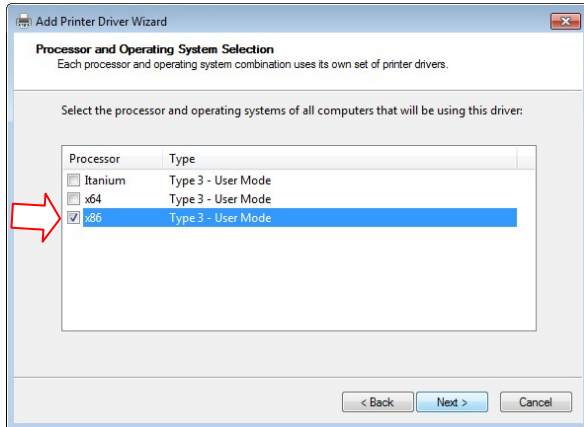


<Fig.3>

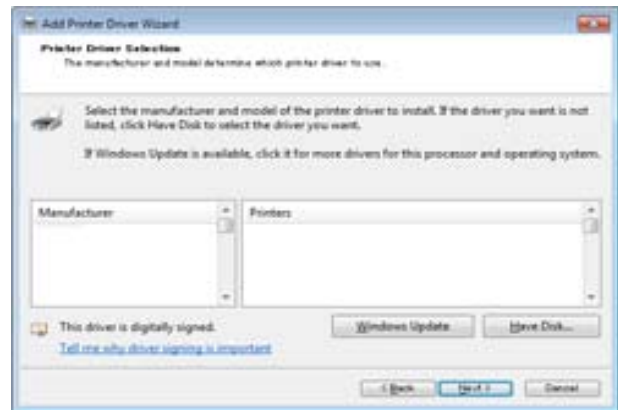


<Fig.4>

- 5) Make sure that “x86” (in case of 32-bit driver) or “x64” (in case of 64-bit driver) has a tick mark, then click “Next >” button. <Fig.5>
- 6) Click “Have Disk” to browse and select the folder where the printer driver is stored. <Fig.6>

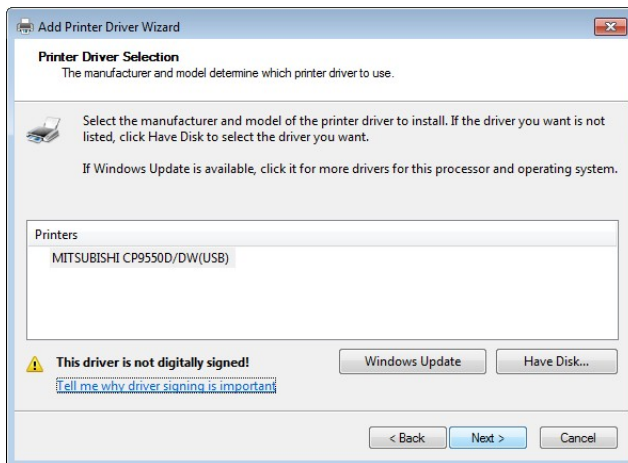


<Fig.5>

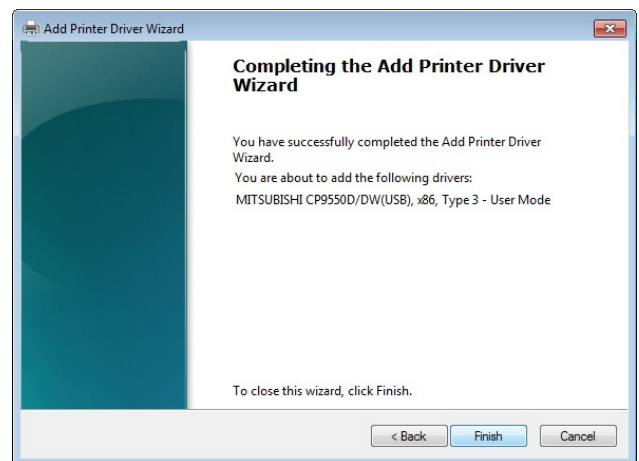


<Fig.6>

- 7) Click “Next >” button. <Fig.7>
- 8) Click “Finish” button <Fig.8>

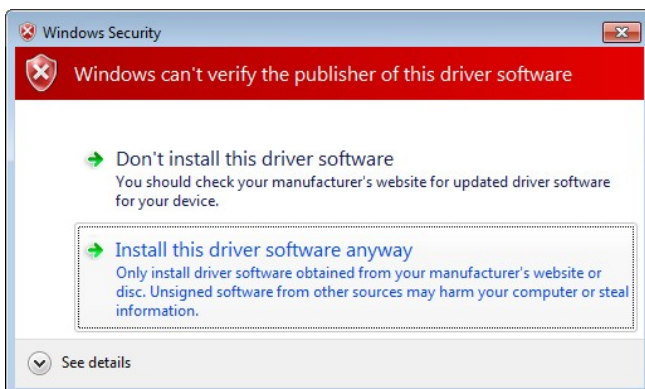


<Fig.7>



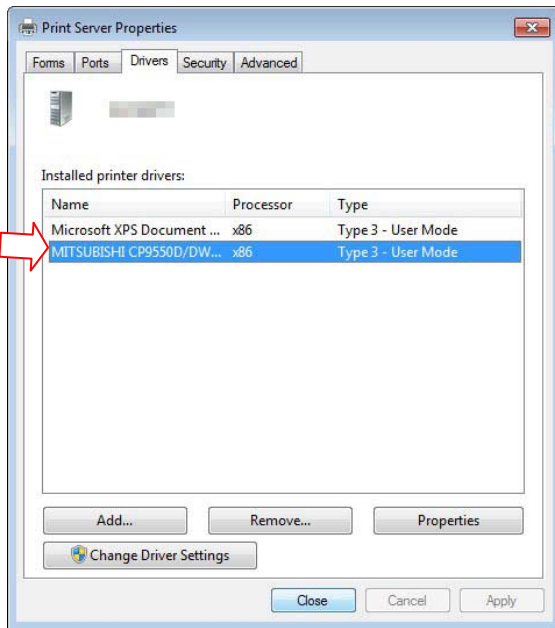
<Fig.8>

- 9) Select “Install this driver software anyway” <Fig.9>  
Wait for a while until “Add Printer Driver Wizard” windows <Fig.8> is automatically closed when the driver installation is completed.



<Fig.9>

- 10) The installed printer driver will be displayed in “Print Server Properties”, Drivers tab.  
Click “Close” button. <Fig.10>



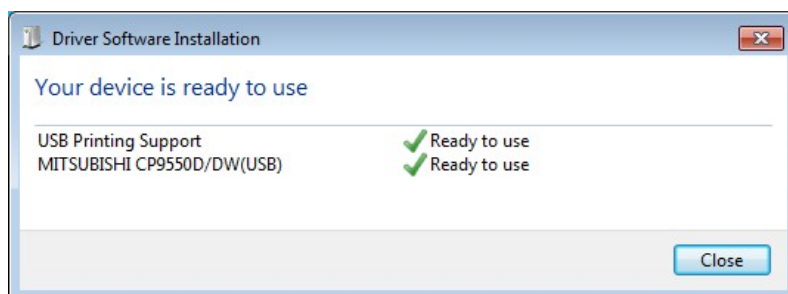
<Fig.10>

- 11) Now, power on the printer and connect it to your computer with USB cable.  
12) The driver software will be automatically installed.  
Click the balloon to check the installation status.<Fig.11>



<Fig.11>

- 13) Click “Close” button to finish the installation. <Fig.12>

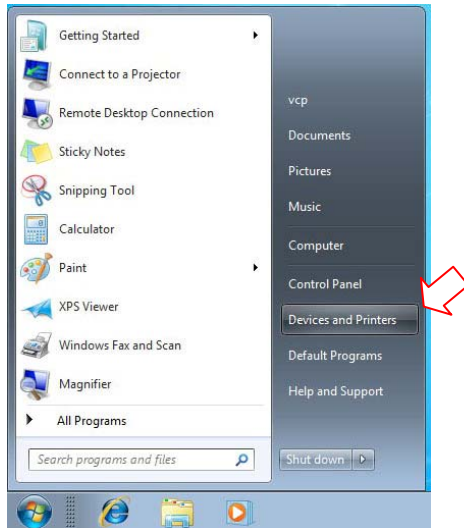


<Fig.12>

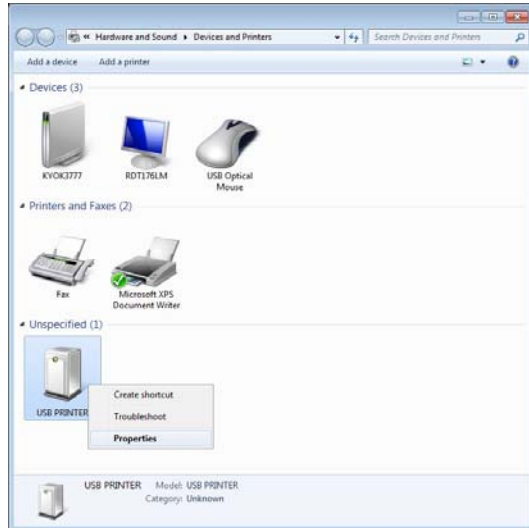
## 2. UPDATE PRINTER DRIVER

If the printer is already connected to a computer before the above steps, proceed following settings to update the printer driver software.

- 1) Click Start Button and select “Devices and Printers” from Start Menu. <Fig.13>
- 2) Right-click of USB PRINTER icon under “Unspecified” category, and select “Properties” <Fig.14>

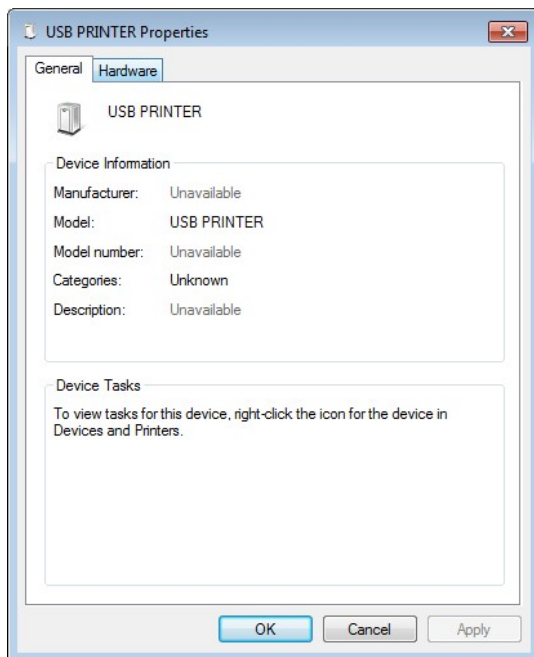


<Fig.13>

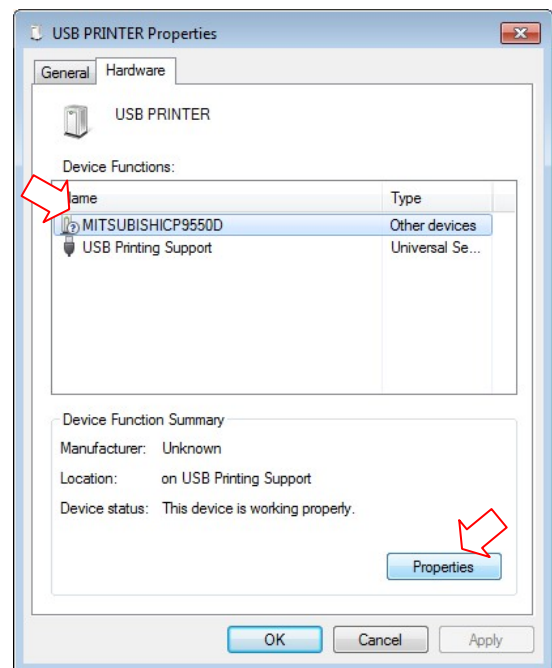


<Fig.14>

- 3) Open “Hardware” tab of “USB PRINTER Properties”. <Fig.15>
- 4) Select your printer in “Device Functions” list, and click “Properties” icon. <Fig.16>



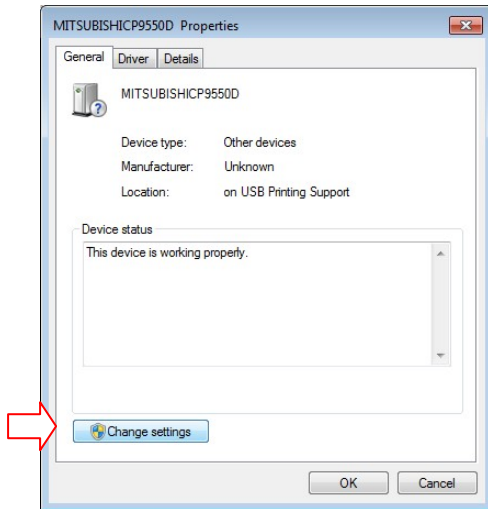
<Fig.15>



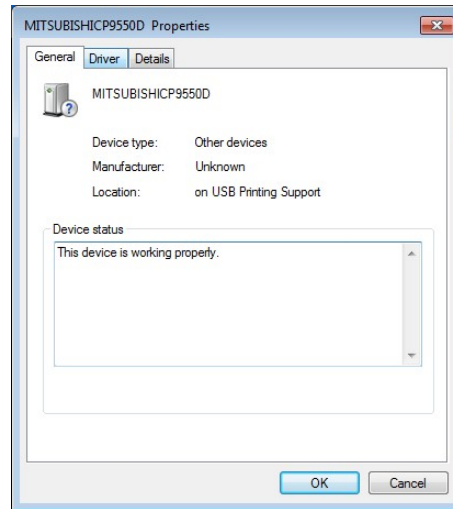
<Fig.16>

5) Click “Change settings” button. <Fig.17>

6) The similar window but no “Change settings” button at the bottom left is displayed. Open “Drivers” tab.  
<Fig.18>



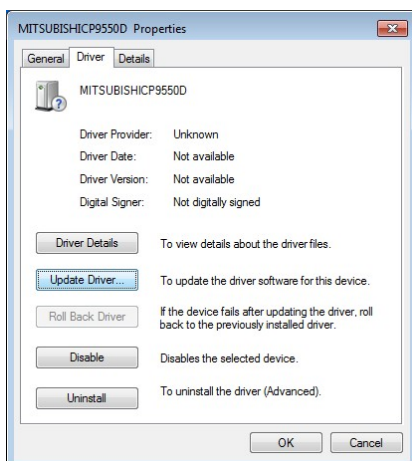
<Fig.17>



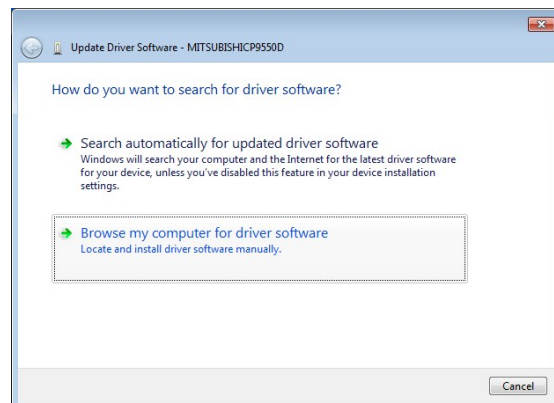
<Fig.18>

7) Click “Update Driver...” button. <Fig.19>

8) Select “Browse my computer for driver software.” <Fig.20>



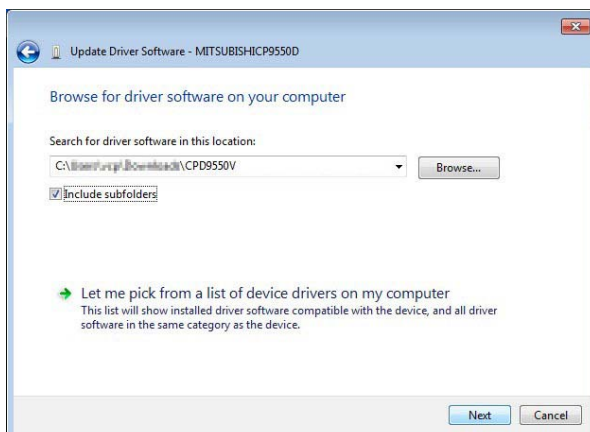
<Fig.19>



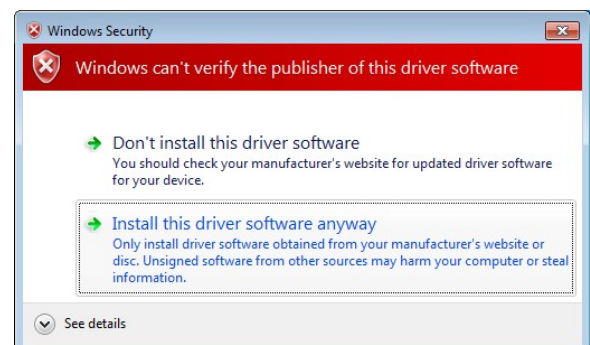
<Fig.20>

9) Click “Browse...” button to select the folder where the printer driver software is stored. <Fig.21>

10) Select “Install this driver software anyway”. <Fig.22>

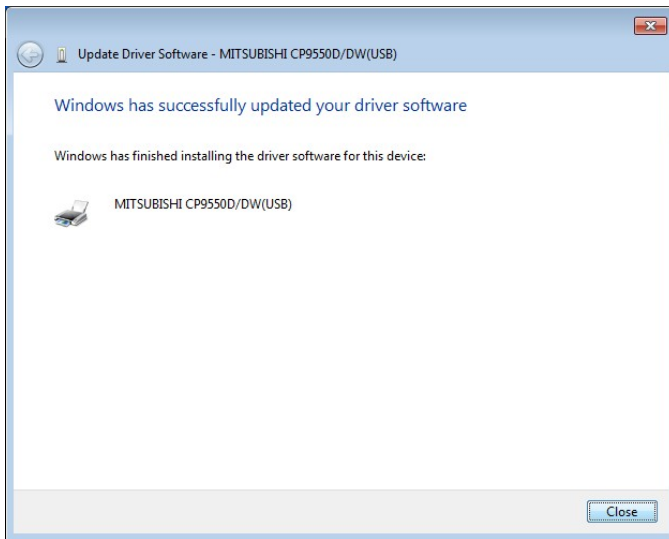


<Fig.21>



<Fig.22>

11) Click “Close” button to finish the installation. <Fig.23>



<Fig.23>



## <Uninstallation>

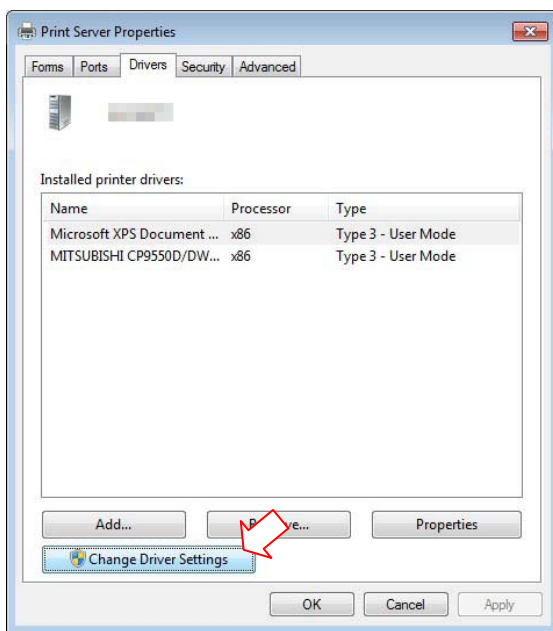
Operate the following procedures to uninstall the printer driver.

When uninstalling the printer driver, confirm that the printer driver is not used from the application or the print job does not remain in the spooler, and confirm that the printer is not set as default printer.

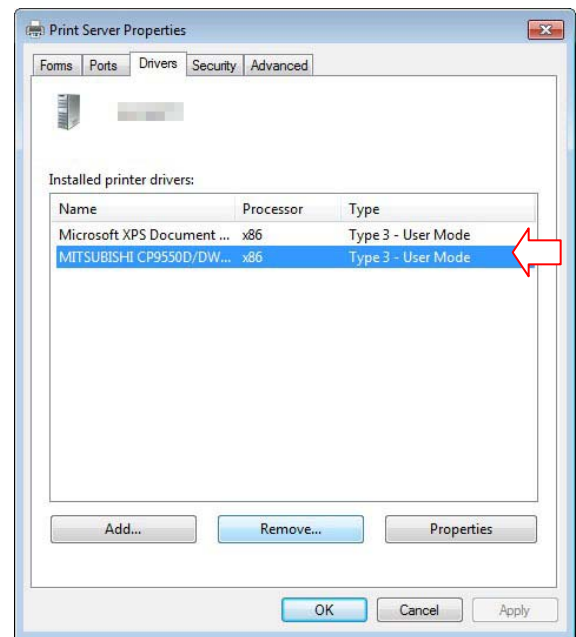
When you uninstall and then reinstall the printer driver, restart the computer after the reinstallation is completed.

- 1) Click Start button and select "Devices and Printers" from Start Menu.
- 2) Right-click the printer icon to be removed and select "Remove device".
- 3) Click "Yes" button in the "Remove Device" confirmation dialog.
- 4) Select any of icon under "Printers and Faxes" category in the "Devices and Printers" window, select "Printer server properties" at the top of the window.
- 5) Open "Drivers" tab of "Printer Server Properties" and click "Change From Settings" button. <Fig.24>
- 6) The similar windows but no "Change From Settings" button at the bottom left is displayed.

Select the printer driver to be removed and click "Remove" button. <Fig.25>



< 図 24 >



< 図 25 >

- 7) Select "Remove driver and driver package." In "Remove Driver And Package" dialog and click "OK".
- 8) Click "Yes" button in "Printer Server Properties" confirmation dialog.
- 9) Click "Delete" button when "Driver package information collected" is displayed in "Remove Driver Package" dialog.
- 10) Select "Remove driver and driver package.", and then click "OK" button.
- 11) Restart the computer.



**<Function Explanation>**

For information about functions of the printer driver, please refer to the Printer Driver Function Guide(CPD9550 Ver.2.30).

- If other version of the printer driver for this printer has already been installed, make sure to uninstall the other version before installing this version.
- After the installation, make sure to reboot your computer. If the reboot is not performed, some printer driver files may not be updated.
- When rebooting or wake-up from suspend while the print spooler stores print job(s), the printer may not print properly. In this case, delete the print job(s) in the spooler dialog and print again.

**<Prohibition matter>**

We prohibit Reverse Engineering, decompiling or reverse assembling of this driver software.

**<Exemption from responsibility>**

Occasionally, this software does not operate normally depending on operating environment. Moreover, Mitsubishi Electric Co. will not assume any responsibility for damage (including, but not limited to, lost profit or damage caused from special circumstances etc.) occurring during the use of this driver.