

PRINTER DRIVER GUIDE

(CPD9500W/CPD9500X)

Microsoft Windows, Windows98, WindowsMillennium, Windows2000 and WindowsXP are either registered trademarks or trademarks of Microsoft Corporation in the United States and/or other countries.

Adobe, Adobe Photoshop are registered trademarks of Adobe Systems.

The various software packages mentioned in this manual are the registered trademarks of their respective companies.

Refer to the following web site to check the latest version of the printer driver.

<http://www.vcp.melco.co.jp>

Use the printer driver corresponding to the operating system.

CPD9500W : Windows98/Millennium

CPD9500X : Windows2000/XP

System requirements

Computer	: Computer equipped with Pentium class CPU or more
Main storage memory	: 128 Mbytes or more
Hard disk	: Empty capacity 256 Mbytes or more
USB cable	: Be sure to use a cable 2m or under.
SCSI board	: SCSI board made by Adaptec Inc.
SCSI cable	: Cable specified by Mitsubishi Electric Co.
Operating system and interface	

OK: Support -: Not support

Driver	Operating system	USB*1	SCSI
CPD9500W	Microsoft(R)Windows(R)98	OK	OK*2
	Microsoft(R)Windows(R)Millennium	OK	OK*2
CPD9500X	Microsoft(R)Windows(R)2000	OK	OK
	Microsoft(R)Windows(R)XP	OK	OK

*1: CP9500DW supports the USB 2.0 (Hi-Speed USB) interface.

As USB 2.0 is completely upwardly compatible with USB 1.1, CP9500DW can be connected with a personal computer on which USB1.1 interface is available.

When you use CP9500DW with USB 2.0 (Hi-Speed USB), the personal computer has to support USB 2.0 (Hi-Speed USB).

For the compatibility of the personal computer with USB 2.0 (Hi-Speed USB), ask the manufacturer of the personal computer.

*2: When you use this printer with Windows98/Me (Millennium), install the latest ASPI layer to your computer. You can download the latest ASPI from the Web site of Adaptec Inc.

<http://www.adaptec.com>

Installation

1. CPD9500W

1.1. USB

1.1.1. Installing the USB port

- 1) Start Microsoft(R) Windows(R) 98/Millennium Operating system.
- 2) Connect a USB cable between the computer and the printer before the installation begins.
- 3) Turn on the printer.
- 4) The Add New Hardware Wizard appears. Click "Next" button. (Fig.1)
- 5) Select "Search for the best driver for your device." and insert the CD-ROM. Click "Next" button. (Fig.2)



<Fig.1>



<Fig.2>

- 6) When using Windows Millennium, the USB port will be installed. Proceed to 9).
- 7) Specify "Win98_Me" folder in the CD-ROM for "Specify a location" and click "Next" button. (Fig.3)
(example: F:\CP9500D\Driver\Win98_Me)
- 8) Click "Next" button. The USB port will be installed. (Fig.4)



<Fig.3>



<Fig.4>

- 9) Click "Finish" button. (Fig.5)
- 10) "Add New Hardware Wizard" appears. (Fig.6)



<Fig.5>



<Fig.6>

1.1.2.Installing the Driver

The printer driver is installed from “Add New Hardware Wizard”.

- 1) Select “Search for the best driver for your device(Recommended).” and click “Next” button. (Fig.7)
- 2) Specify “Win98_Me” folder in the CD-ROM for “Specify a location” and click “Next” button. (Fig.8)
(example: F:\CP9500D\Driver\Win98_Me)



<Fig.7>

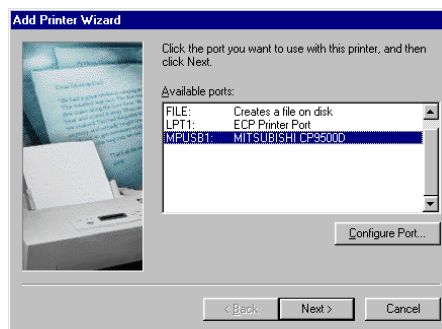


<Fig.8>

- 3) Click “Next” button. (Fig.9)
- 4) Select the connected printer from “Available Ports (A)” and click “Next” button. (Fig.10)

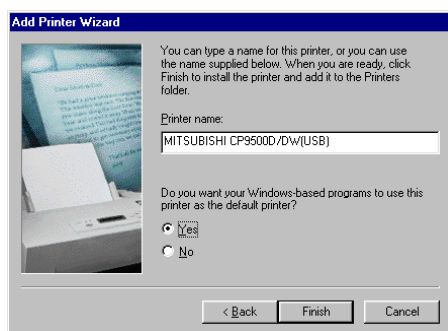


<Fig.9>

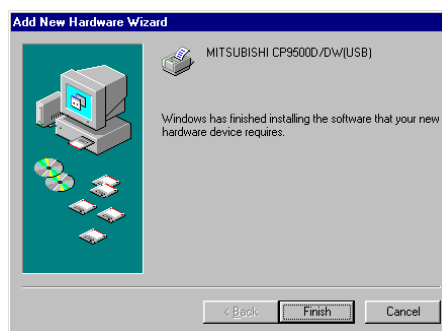


<Fig.10>

- 5) When you usually use this printer, select “Yes” and click “Finish” button. (Fig.11)
- 6) Click “Finish” button. (Fig.12)



<Fig.11>



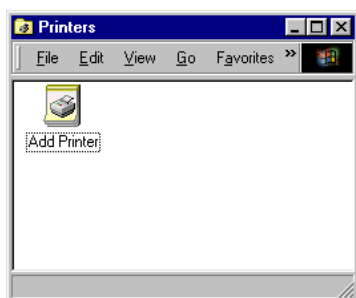
<Fig.12>

- 7) Carry out “Test print” from the printer property to check the printer setting. When printing the test page, select the size of the paper that is loaded in the paper tray on “Paper” tab.

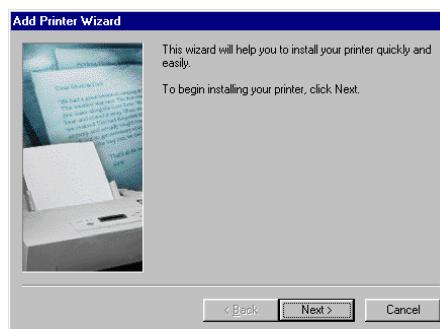
1.2.SCSI

1.2.1.Installing the driver

- 1) Connect the printer and computer before the installation begins.
For setting the printer's interface to SCSI, see the operation manual of the printer.
- 2) Start Microsoft(R) Windows(R) 98/Millennium Operating system.
- 3) Click "Start" button and select "Printer (P)" of "Setting (S)" menu.
- 4) The window of "Printers" will be displayed. (Fig.13)
Double-click "Add Printer" icon.
- 5) "Add Printer wizard" starts. (Fig.14)

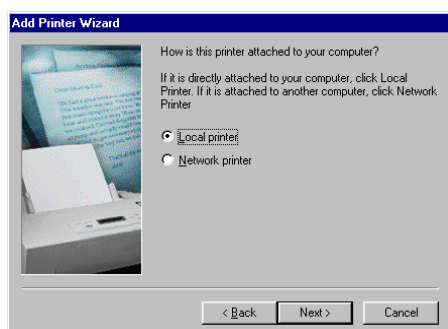


<Fig.13>

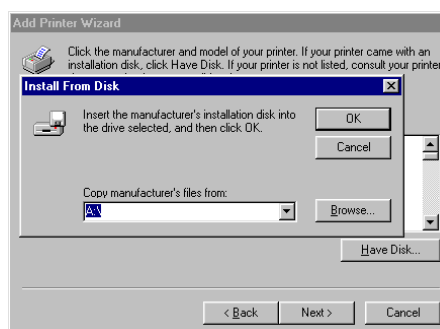


<Fig.14>

- 6) Click "Next" button.
If the network is set, the window to select the local printer or the network printer will be displayed.
Select the local printer. (Fig. 15)
- 7) Click the "Have Disk (H)" button. (Fig. 16)
- 8) If the dialog "Install From Disk" is displayed, insert the CD-ROM.
Input the path to specify cpd9500w.inf in the Win98_Me folder .
And click the "OK" button. (example:F:\CP9500D\Driver\Win98_Me\cpd9500w.inf)

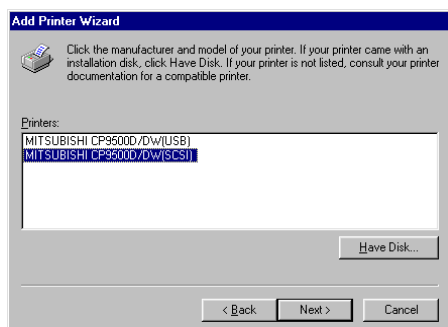


<Fig.15>

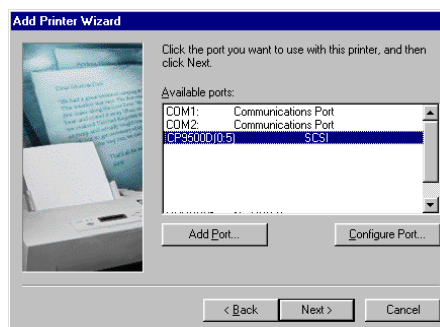


<Fig.16>

- 9) Select MITSUBISHI CP9500D/DW(SCSI) and click "Next" button. (Fig.17)
- 10) Select the connected printer from "Available Port (A)" and click "Next" button. (Fig.18)
In case of SCSI printer, for instance, when CP9500DW of identification number 5 is connected with bus number 0, it will be displayed as CP9500D(0:5).

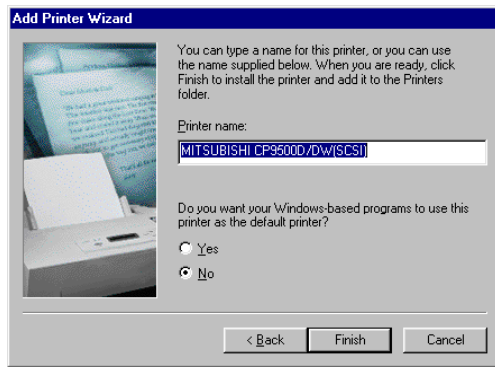


<Fig.17>



<Fig.18>

- 11) If you set it as the default printer, select “Yes” and click “Finish” button.(Fig.19)
When other printers are not installed, a setup of the default printer is not displayed.



<Fig.19>

- 12) Reboot after completing all procedures.
*In case that CP9500DW is used as SCSI printer, do not install the printer driver from “New hardware addition wizard” which appears when the operating system is started. (Click “Cancel” button.)
- 13) Open the printer properties. Print a test page to ensure that the driver has been installed correctly.
When you print the test page, choose the “Paper size” from the Paper tab, to match the installed media.

2.CPD9500X

2.1.Windows2000

2.1.1.USB

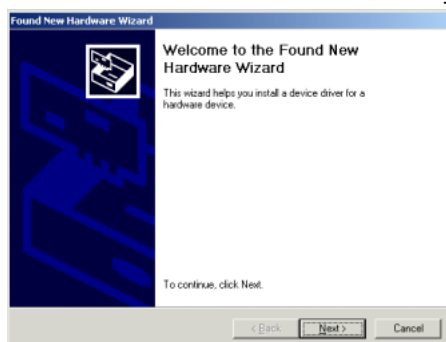
2.1.1.1.Installing the USB port

- 1) Start Microsoft(R) Windows(R) 2000 Operating system.
- 2) Connect a USB cable between the computer and the printer before the installation begins.
- 3) Turn on the printer.
- 4) A USB port will be installed automatically.
- 5) “Found New Hardware Wizard” appears. (Fig.20)

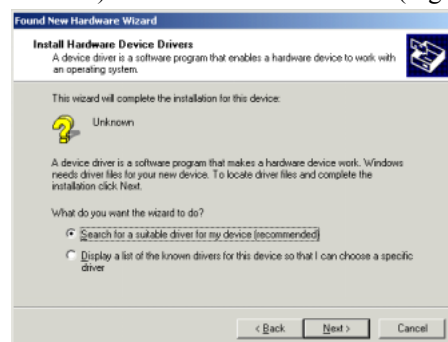
*The OS standard USB port is used for USB connection in Windows 2000.

2.1.1.2.Installing the driver

- 1) Insert the CD-ROM.
- 2) Click “Next” button on “Found New Hardware Wizard”. (Fig.20)
- 3) Select “Search for a suitable driver for my device (recommended)” and click “Next” button. (Fig.21)

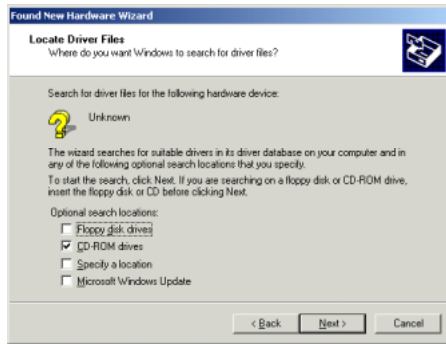


<Fig.20>

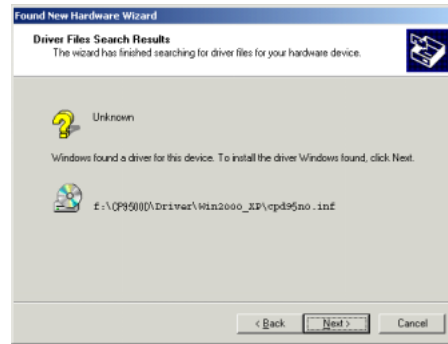


<Fig.21>

- 4) Select “CD-ROM drives” and click “Next” button.(Fig.22)
- 5) Click “Next” button.(Fig.23)

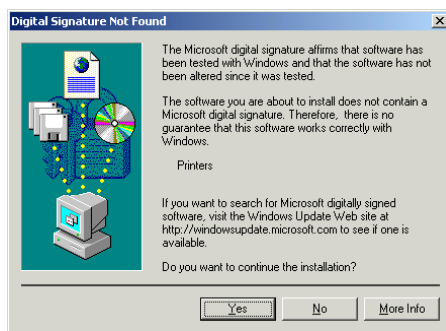


<Fig.22>

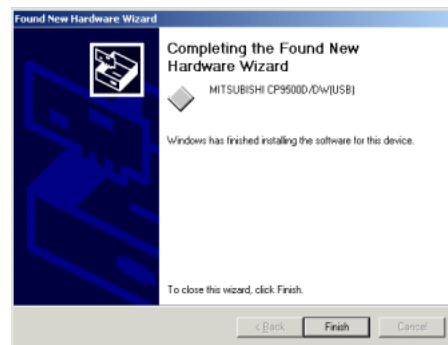


<Fig.23>

- 6) Click “Yes” button.(Fig.24)
- 7) Click “Finish” button.(Fig.25)



<Fig.24>



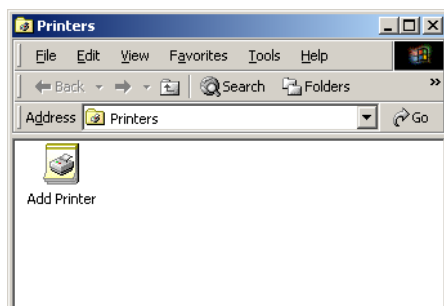
<Fig.25>

- 8) Carry out “Test print” from the printer property to check the printer setting. When printing the test page, select a correct paper size that is loaded in your printer. The paper selection is shown on “Print” tab on the printer property.

2.1.2.SCSI

2.1.2.1.Installing the driver

- 1) Connect the printer and computer before the installation begins.
For setting the printer’s interface to SCSI, see the operation manual of the printer.
- 2) Start Microsoft(R) Windows(R) 2000 Operating system.
- 3) Click “Start” button and select “Printer (P)” of “Setting (S)” menu.
- 4) The window of “Printers” will be displayed.
Double-click “Add Printer” icon. (Fig.26)
- 5) “Add Printer wizard” starts. Click “Next” button.(Fig.27)

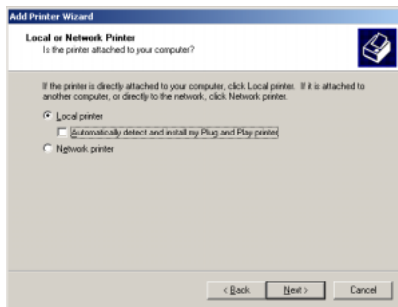


<Fig.26>

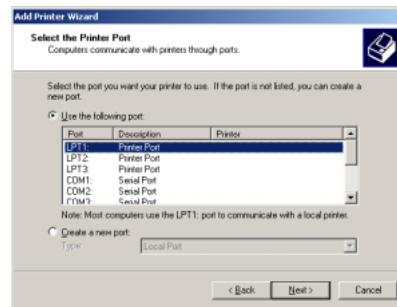


<Fig.27>

- 6) If the network is set, the window to select the local printer or the network printer will be displayed.
Select the local printer. (Fig.28)
- 7) Select the port which you would like to use, and click “NEXT”.(Fig.29)
When you use a SCSI printer, the SCSI port is not displayed. After installation of the printer driver is completed, change the printer port. Select LPT1.

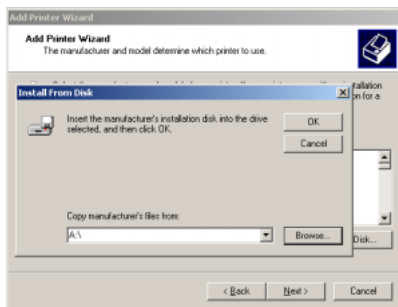


<Fig.28>

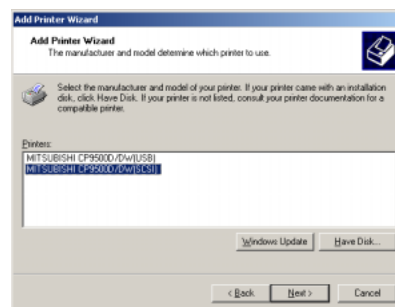


<Fig.29>

- 8) Click “Have Disk (H)” button. (Fig.30)
- 9) If the dialog “Install From Disk” is displayed, insert the CD-ROM.
Specify the Win2000_XP folder. Click the “OK” button.
(ex. F:\CP9500D\Driver\Win2000_XP)
- 10) Select MITSUBISHI CP9500D/DW(SCSI) and click “Next” button. (Fig.31)

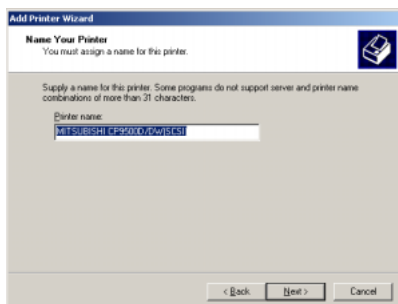


<Fig.30>

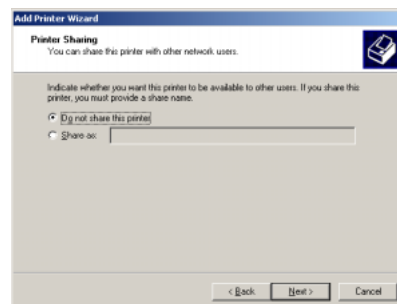


<Fig.31>

- 11) Specify the name of this printer. When setting this printer to be used usually, select “Yes” and click the “Next” button. (Fig.32)
- 12) Select whether this printer will be shared with other network users or not. (Fig.33)
Select “Do not share this printer” and click “Next” button.

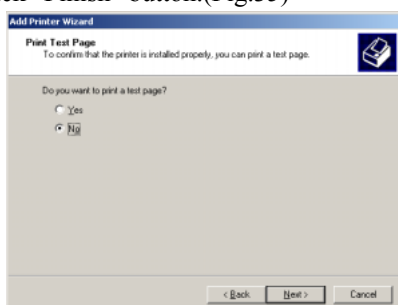


<Fig.32>

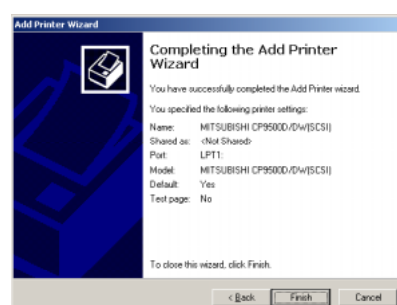


<Fig.33>

- 13) Set the test page printing. Select “No” and click “Next” button.(Fig.34)
- 14) Click “Finish” button.(Fig.35)

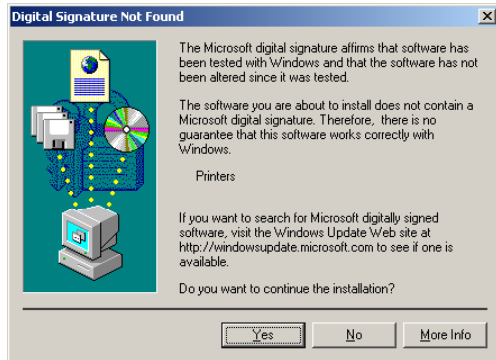


<Fig.34>

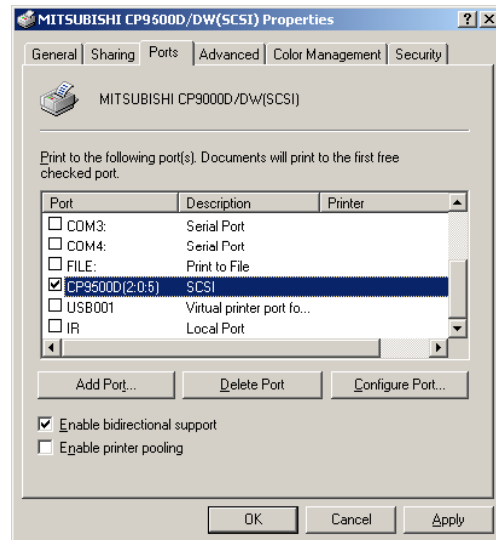


<Fig.35>

- 15) Click “Yes” button.(Fig.36)
- 16) Reboot after completing all procedures.
- 17) In case of SCSI printer, open the printer properties and select the printer port in the port tag.(Fig.37)
For instance, when CP9500DW with identification number 5 is connected with bus number 0, it will be displayed as CP9500D(0:5).
- 18) Check whether the test page is printed and the printer setting is normal.
When you print the test page, choose the correct “Paper size” from the Paper tab.



<Fig.36>



<Fig.37>

2.2.WindowsXP

2.2.1.USB

2.2.1.1.Installing the USB port

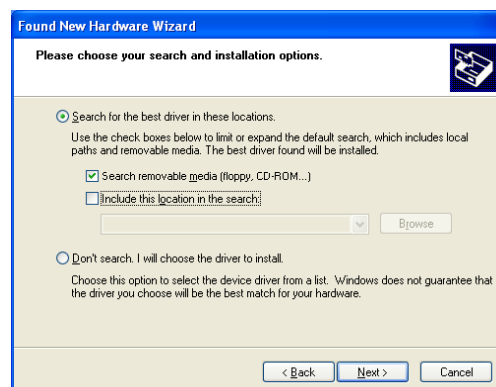
- 1) Start Microsoft(R) Windows(R) XP Operating system.
 - 2) Connect a USB cable between the computer and the printer before the installation begins.
 - 3) Turn on the printer.
 - 4) A USB port will be installed automatically.
 - 5) “Found New Hardware Wizard” appears. (Fig.38)
- *The OS standard USB port is used for USB connection in WindowsXP.

2.2.1.2.Installing the driver

- 1) Insert the CD-ROM.
- 2) Select “Install from a list of specific location (Advanced)” on “Found New Hardware Wizard” and click “Next” button. (Fig.38)
- 3) Select “Search removable media (floppy, CD-ROM...)” and click “Next” button. (Fig.39)



<Fig.38>



<Fig.39>

- 4) Click “Continue Anyway” button. (Fig.40)
- 5) Click “Finish” button.(Fig.41)



<Fig.40>



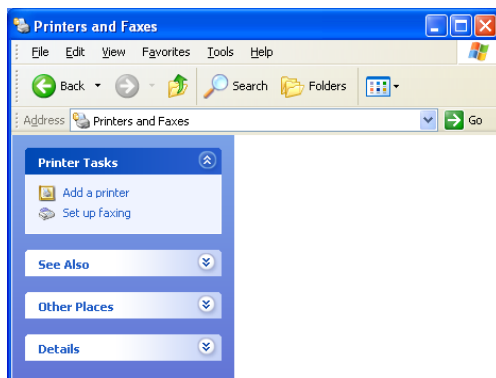
<Fig.41>

- 6) Carry out “Test print” from the printer property to check the printer setting. When printing the test page, select the size of the paper that is loaded in the paper tray on “Print” tab on the printer property.

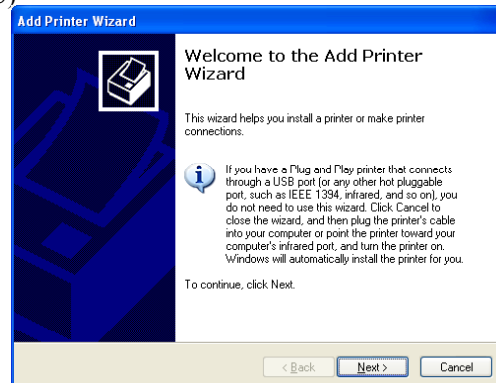
2.2.2.SCSI

2.2.2.1.Installing the driver

- 1) Connect the printer and computer before the installation begins.
For setting the printer’s interface to SCSI, see the operation manual of the printer.
- 2) Start Microsoft(R) Windows(R) XP Operating system.
- 3) Click “Start” button and select “Printers and Faxes”.
- 4) The window of “Printers and Faxes” will be displayed.
Click “Add Printer” icon. (Fig.42)
- 5) “Add Printer wizard” starts. Click “Next” button.(Fig.43)

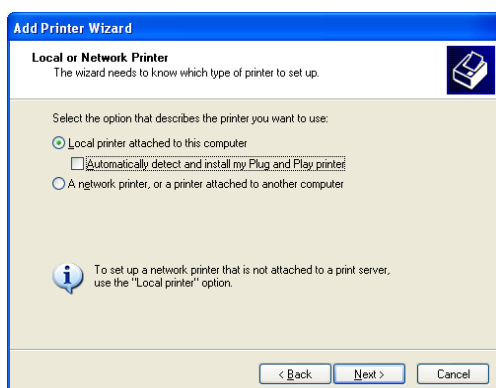


<Fig.42>

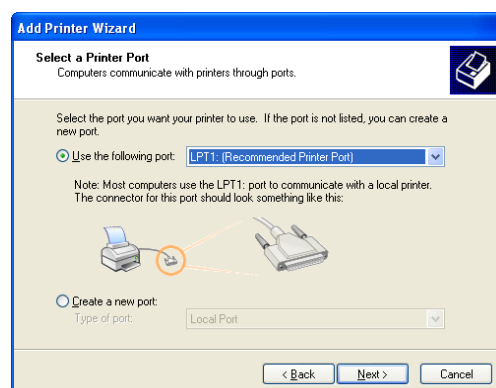


<Fig.43>

- 6) If the network is set, the window to select the local printer or the network printer will be displayed.
Select the local printer. (Fig.44)
- 7) Select the port which you would like to use, and click “NEXT”.(Fig.45)
Click “Next” button.
When you use a SCSI printer, the SCSI port is not displayed. After installation of the printer driver is completed, change the printer port. Select LPT1.

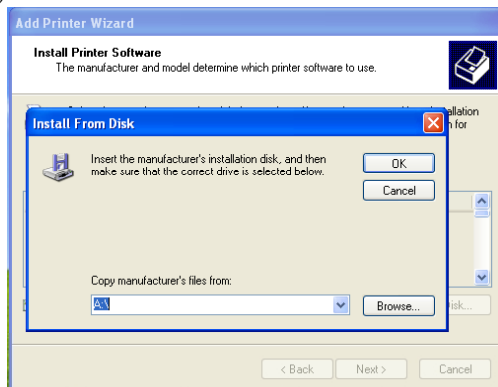


<Fig.44>

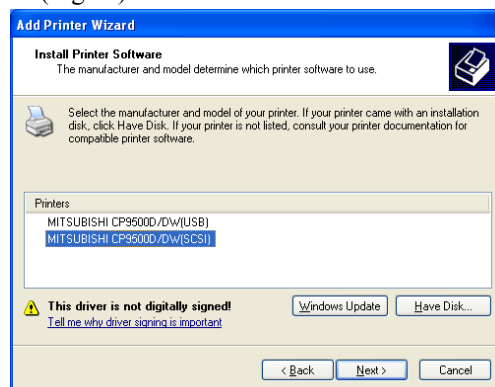


<Fig.45>

- 8) Click the “Have Disk (H)” button. (Fig.46)
- 9) If the dialog “Install From Disk” is displayed, insert the CD-ROM.
Specify the Win2000_XP folder. Click the “OK” button.
(example. F:\CP9500D\Driver\Win2000_XP)
- 10) Select MITSUBISHI CP9500DW and click “Next” button. (Fig.47)

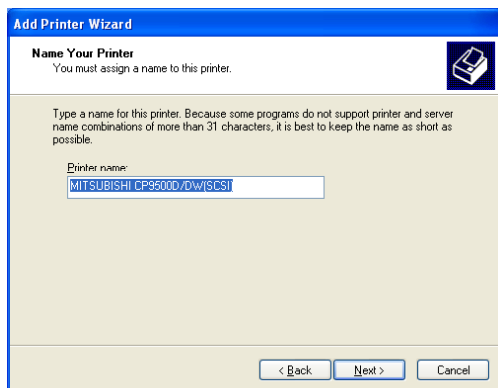


<Fig.46>

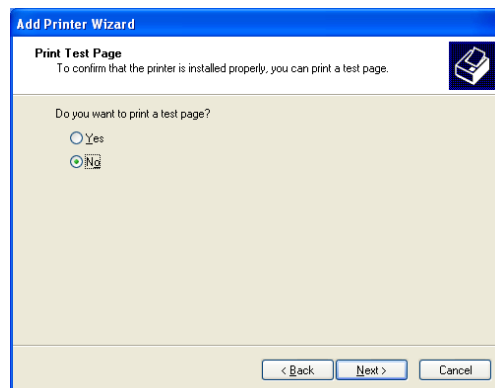


<Fig.47>

- 11) Specify the name of this printer. When setting this printer to be used usually, select “Yes” and click the “Next” button. (Fig.48)
- 12) Set the test page printing. Select “No” and click “Next” button. (Fig.49)

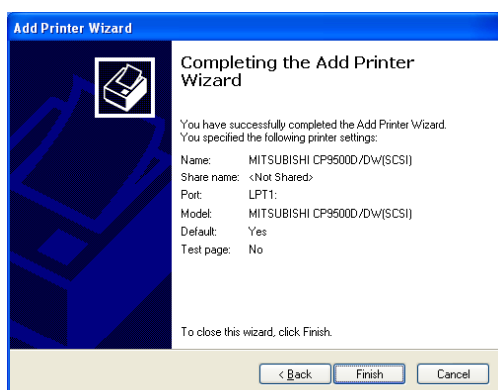


<Fig.48>



<Fig.49>

- 13) Click “Finish” button. (Fig.50)
- 14) Click “Continue Anyway” button. (Fig.51)

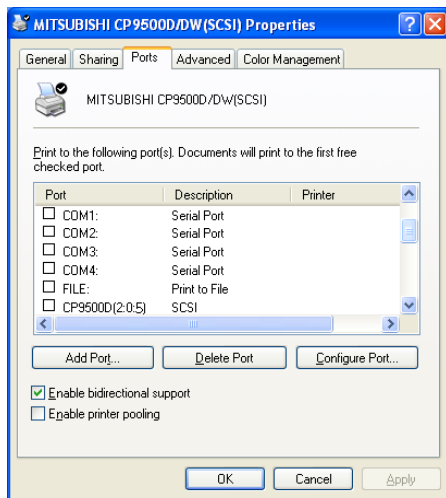


<Fig.50>



<Fig.51>

- 15) Reboot after completing all procedures.
- 16) In case of SCSI printer, open the printer properties and select the printer port in the port tab. (Fig.52)
For instance, when CP9500DW with identification number 5 is connected with bus number 0, it will be displayed as CP9500D(0:5).
- 17) Check whether the test page is printed and the printer setting is normal.
When you print the test page, choose the correct "Paper size" from the Paper tab.



<Fig.52>

Uninstallation

Operate the following procedures to uninstall the printer driver.

When uninstalling the printer driver, confirm that the printer driver is not used from the application or the print job does not remain in the spooler.

CPD9500W (Windows98/Millennium)

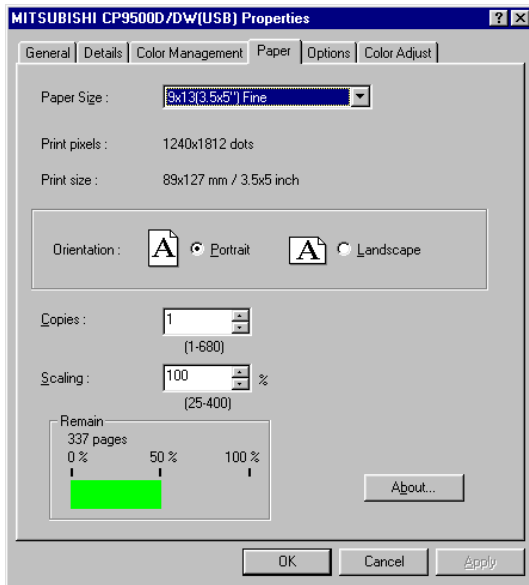
- 1) Delete all MITSUBISHI CP9500D/DW(USB) and MITSUBISHI CP9500D/DW(SCSI) printer drivers in the printer folder.
- 2) Reboot the computer after completing the above-mentioned procedure.

CPD9500X (Windows2000/XP)

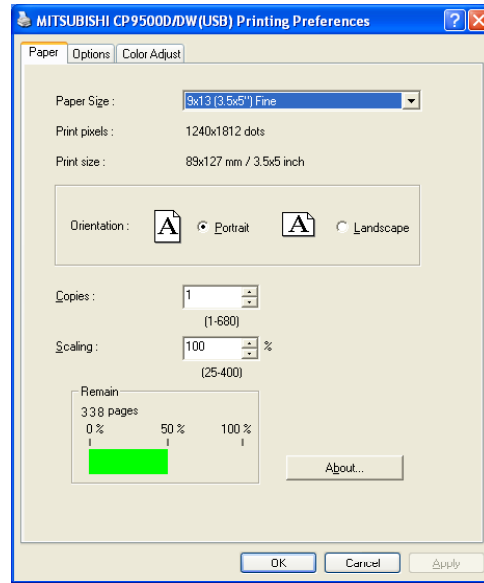
- 1) Insert the CD-ROM.
- 2) Start up the command prompt.
- 3) Input and execute the command.
 - a) When only the USB printer driver is installed;
When CD drive is D,
C:\>D:\CP9500D\Driver\Win2000_XP\rem9500 cp9500d_usb
 - b) When only the SCSI printer driver is installed;
When CD drive is D,
C:\>D:\CP9500D\Driver\Win2000_XP\rem9500 cp9500d_sc
 - c) When both of the USB and SCSI printer drivers are installed;
Execute a) and b).
- 4) Reboot the computer.

Function explanation

1. Paper dialog



<Fig.53-1. The dialog of “Paper” (Windows 98)>



<Fig.53-2. The dialog of “Paper” (Windows XP)>

1) Paper Size

The size of paper is selected.

The number of print pixels for each paper size is shown in the right table. When using the paper for post card, select 10x15(4x6”) Fine or 10x15(4x6”) Super Fine.

2) Print pixels

The number of pixels to print in each paper size is displayed.

3) Print size

The print size is displayed.

4) Orientation

The direction of paper is set.

5) Copies

The printer prints the number of printouts which is shown in dialog. (Range : 1 - 680)

*When multiple copies are printed, it becomes like the example below usually.

(example) The print result of 2 copies of 3 pages: 1p 1p 2p 2p 3p 3p

*Some applications might not transmit as the above method.

(example) The print result of 2 copies of 3 pages

:To achieve 1p 2p 3p 1p 2p 3p, the application outputs each image twice.

6) Scaling

Enlargement scale is set. (Range : 25-400%)

7) Remainings

The remaining amount of the ink ribbon is displayed in a bar.

When a printer is not connected or information from the printer can not be read, this bar is displayed in gray.

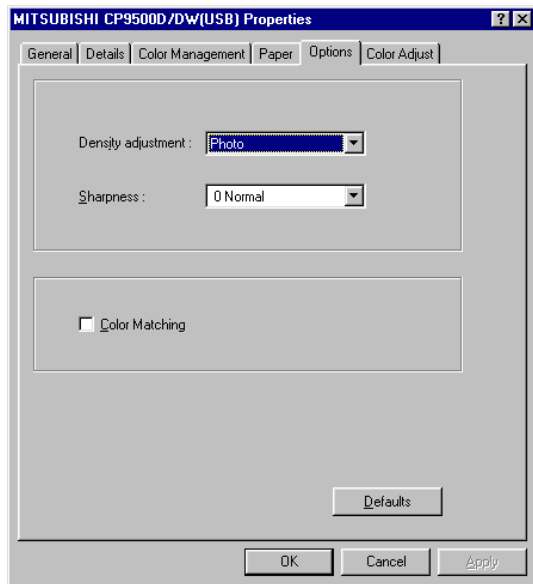
When using SCSI, the remaining amount is not displayed.

8) About...

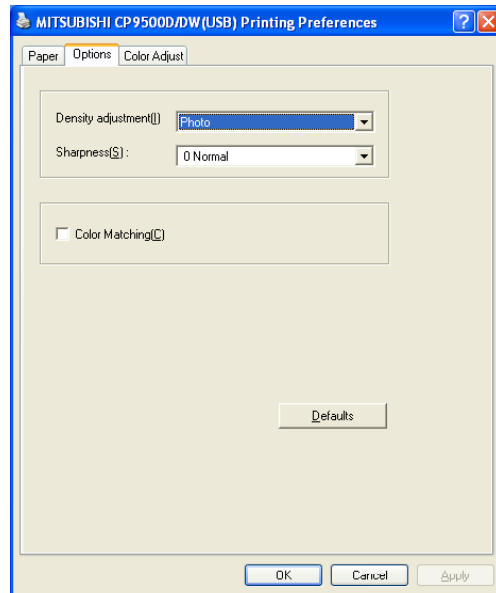
Displays the version information of this driver.

Paper size	Print pixel
9x13(3.5x5”) Fine	1240*1812
10x15(4x6”) Fine	1416*2152
13x18(5x7”) Fine	1812*2452
15x20(6x8”) Fine	2152*2792
15x23(6x9”) Fine	2152*3146
9x13(3.5x5”) Super Fine	2480*3624
10x15(4x6”) Super Fine	2832*4304
13x18(5x7”) Super Fine	3624*4904
15x20(6x8”) Super Fine	4304*5584
15x23(6x9”) Super Fine	4304*6292

2. Option setting dialog



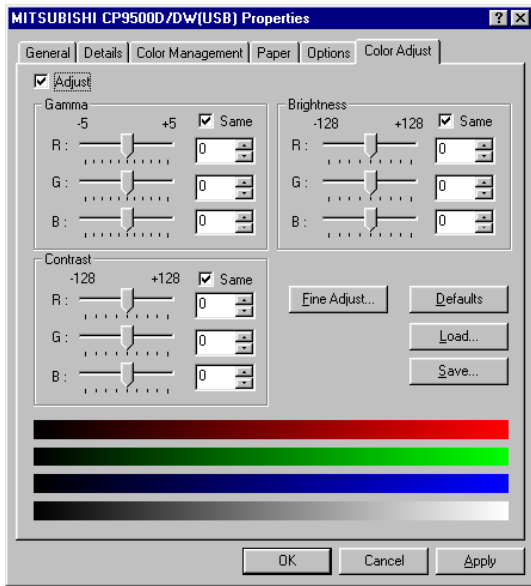
<Fig.54-1 Option setting dialog (Windows 98)>



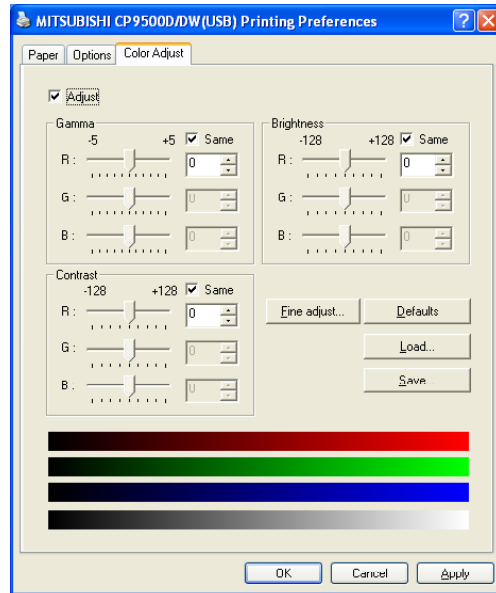
<Fig.54-2 Option setting dialog (Windows XP)>

- 1) Density
Photo/High contrast
Density of the image is changed. When selecting “High contrast”, the color of grey level becomes brighter.
- 2) Sharpness
none / -3 / -2 / -1 / 0 / 1 / 2 / 3
Level of outline correction is changed.
none :Not perform the outline correction.
-3 to 3 :The value is smaller, the outline becomes softer.
The value is larger, the outline becomes sharper.
- 3) Color matching
Color matching is carried out according to the ICC profile set in the “Color control” tab.
When the ICC profile is not set in the “Color control” tab, set the “Color matching” to OFF because the color matching is not carried out in this case.
- 4) Defaults
All the settings in Option dialog are reset to the defaults.

3. Color adjustment



<Fig.55-1 Color adjustment dialog(Windows 98)>



<Fig. 55-2 Color adjustment dialog(Windows XP)>

3.1. Color Adjust dialog

1) Adjust

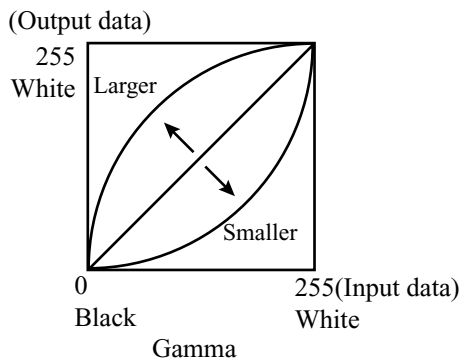
Tick the box for the color adjustment.

2) Gamma

Adjusted value(-5 - +5)

When you want to increase the density of the middle tones, decrease the value of “Gamma” of the color adjustment dialog.

Same check box ON:R,G and B are same value, OFF:R,G and B are individually adjusted.

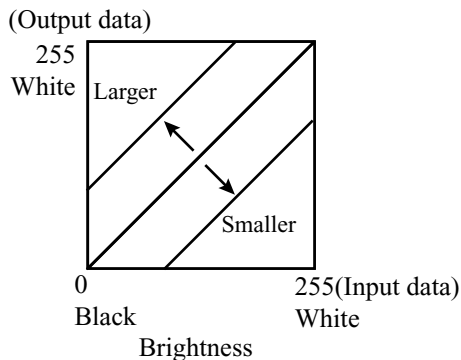


3) Brightness

Adjusted value (-128-+128)

When you want the brightness of the print picture to be dark, the value of “Brightness” of the color adjustment dialog must be decreased.

Same check box ON:R,G and B are same value, OFF:R,G and B are individually adjusted.



4) Contrast

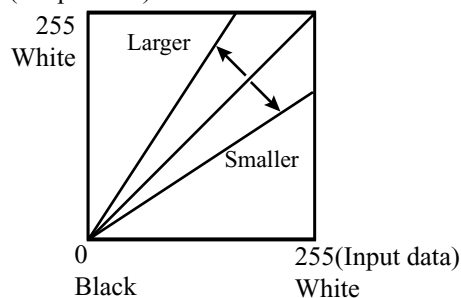
Adjusted value (-128-+128)

When you want the contrast of the print picture to be strong, the value of “Contrast” of the color adjustment dialog must be increased.

Same check box

ON: R, G and B are same value, OFF: R, G and B are individually adjusted.

(Output data)



Contrast

5) Fine Adjust

The more minute color adjustments are carried out by the Gamma adjustment tone curve.

6) Defaults

All adjustable values in Color Adjust dialog become 0.

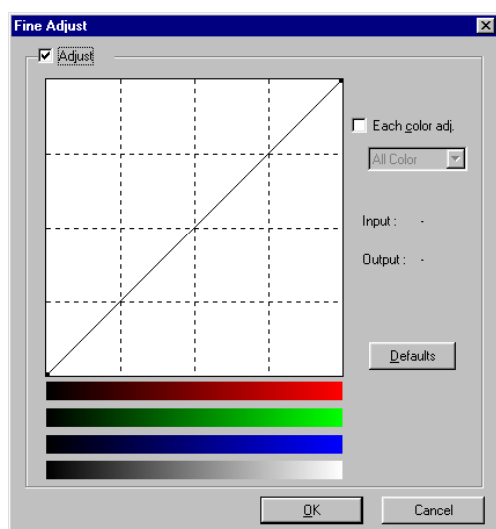
7) Load...

The color adjustment setting file is loaded.

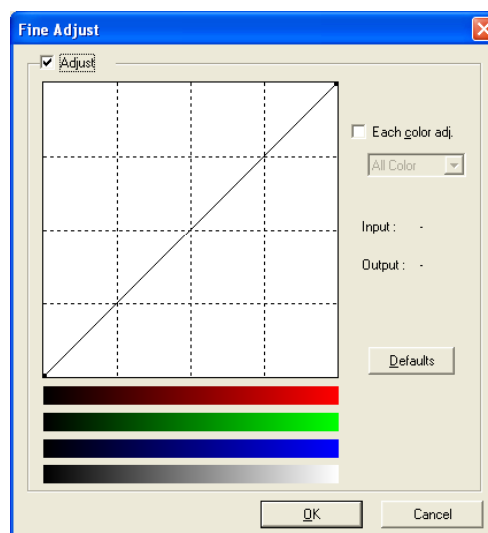
8) Save...

The color adjustment setting is saved.

3.2. Fine Adjust dialog



<Fig.56-1 Fine Adjust dialog (Windows 98)>



<Fig.56-2 Fine Adjust dialog (Windows XP)>

1) Adjust

Tick the box for the color adjustment.

2) Each color adjustment

ON: Each RGB color is individually adjusted.

OFF: The same adjustment of each RGB color carries out.

3) Selecting the color to be adjusted

When adjusting color individually, select the color to be adjusted.

4) I/O value display

The input (gradation value before adjustment) and output (gradation value after adjustment) of the adjustment point are displayed.

5) Defaults

All the tone curves become a linear straight line of the range (0, 0) - (255, 255).

4. Error indication

4.1.USB

No.	Error dialog message	Button	Operation
(1)	Printer Power is off or Cable is not connected. After removing error and clicking Retry button, Printer will restart.	Retry	After connecting the printer (Turn on the printer. / Connect the I/F cable.), click Retry button. The dialog disappears and printing starts again.
		Cancel	If Cancel button is clicked, printing is canceled.
(2)	Printer is not connected.	OK	When you use Windows98/Me, click OK button. After connecting the printer (Turn on the printer. / Connect the I/F cable.), start printing process again. When you use Windows2000/XP, click OK button. After connecting the printer (Turn on the printer./ Connect the I/F cable), printing starts automatically.
(3)	The printer does not respond. Turn the printer Off and then On again, and try again.	OK	When clicking OK button, the dialog disappears and the print job is deleted. After turning the power off and turning it back on, start printing process again.
(4)	Something is wrong with the printer.	Cancel	When the error is resolved, the dialog disappears and printing starts automatically. When Cancel button is clicked, printing is canceled.
(5)	Mechanical Error. After removing Error, press the FEED&CUT button.		
(6)	Mechanical Error. After removing Error, open and close the door.		
(7)	Door is opened.		
(8)	Open and close the door.		
(9)	Ink ribbon and paper type do not match.		
(10)	Ink ribbon is not correctly installed.		
(11)	Ink ribbon end.		
(12)	Paper empty.		
(13)	The ink ribbon is not standard.		
(14)	The printer was turned off while printing. Press the FEED&CUT button.		
(15)	Something is wrong with the printer.	No buttons	When the error is resolved, the dialog disappears and printing starts automatically.
(16)	Mechanical error. After removing Error, press the FEED&CUT button.		
(17)	Mechanical Error. After removing Error, open and close the door.		
(18)	Paper jam. After removing Error, press the FEED&CUT button.		
(19)	Paper jam. After removing Error, open and close the door.		
(20)	Open and close the door.		
(21)	Ink ribbon and paper type do not match.		
(22)	Paper size of printer driver and ink ribbon type do not match.		
(23)	Paper end.		
(24)	Ink ribbon empty. After removing Error, press the FEED&CUT button.		
(25)	The printer was turned off while printing. Press the FEED&CUT button.		

When no error message is displayed on the monitor and printing is not carried out, check the indicators on the front of the printer.

When an error occurs in the printer, printing starts automatically by resolving the error.

For the indicator on the printer, see the operation manual of CP9500DW.

The error may not be displayed in the case of system configurations other than that shown below.

Interface	Operating system	Setting
USB	Windows98	Set "Enable bi-directional support for this printer" for printer properties.
	WindowsMillennium	
	Windows2000	
	WindowsXP	

In Windows 2000/XP, the errors of (1) is not displayed.

In Windows 2000/XP, the print job is not deleted if the printer is not turned on or the I/F cable is not connected. By turning on the printer or connecting the I/F cable, the data will be transferred again.

4.2.SCSI

No.	Error dialog message	Button	Operation
(1)	Printer is not connected.	OK	When clicking OK button, the dialog disappears and the print job is deleted. After operating the personal computer and the printer as described *1, start printing process again.
(2)	The printer does not respond.		
(3)	Something is wrong with the printer.	Cancel	When the error is resolved, the dialog disappears and printing starts automatically. When Cancel button is clicked, printing is canceled. *2
(4)	Mechanical Error. After removing Error, press the FEED&CUT button.		
(5)	Mechanical Error. After removing Error, open and close the door.		
(6)	Door is opened.		
(7)	Open and close the door.		
(8)	Ink ribbon and paper type do not match.		
(9)	Ink ribbon is not correctly installed.		
(10)	Ink ribbon end.		
(11)	Paper empty.		
(12)	The ink ribbon is not standard.		
(13)	The printer was turned off while printing. Press the FEED&CUT button.		
(14)	Something is wrong with the printer.	No buttons	When the error is resolved, the dialog disappears and printing starts automatically. *2
(15)	Mechanical error. After removing Error, press the FEED&CUT button.		
(16)	Mechanical Error. After removing Error, open and close the door.		
(17)	Paper jam. After removing Error, press the FEED&CUT button.		
(18)	Paper jam. After removing Error, open and close the door.		
(19)	Open and close the door.		
(20)	Ink ribbon and paper type do not match.		
(21)	Paper size of printer driver and ink ribbon type do not match.		
(22)	Paper end.		
(23)	Ink ribbon empty. After removing Error, press the FEED&CUT button.		
(24)	The printer was turned off while printing. Press the FEED&CUT button.		

*1 a) Exit the operating system and turn off the computer.

b) After connecting the printer (Connect the I/F cable./Switch the interface to SCSI.), turn on the printer.

c) Turn on the computer and start up the operating system.

*2 If the printing process does not properly start again though the feed & cut is carried out, operate the computer and the printer by the procedures described in a). Then start printing process again.

- *3 When no error message is displayed on the monitor and printing is not carried out, check the indicators on the front of the printer.
When an error occurs in the printer, printing starts automatically by resolving the error.
For the indicator on the printer, see the operation manual of CP9500DW.

Notes

1. All printer drivers

1) Secure of Hard disk for spool file

Secure the capacity of Hard disk for spool file enough for the printer operation and the number of printing sheets.
The printing cannot be correctly carried out when the capacity is running short.
The drive for spool file is the same drive as the drive of Windows system usually.

2) Operation of the printer

Refer to the operation manual of the printer.
Do not turn off the power switch during data transfer or print.
If you turn off the power switch, restarting of a computer may be needed.
When deletion of a printing data cannot be performed, restarting of a computer is required.

3) Applicability of color adjustment

The color adjustment is applied the entire printing range including the background.

4) About "Print directly to the printer"

With some applications, if "Print directly to the printer" is selected, objects may not be printed correctly.
In that case, select "Spool print documents ..." for printing.
CPD9500W : the "spool Settings" in the "details" page of CPD9500W's property sheet
CPD9500X : the "details" page of CPD9500X's property sheet

5) About connection of a computer and a printer

Do not disconnect the interface cable during data transfer.
If the interface cable is disconnected, connect it after the DATA indicator on the printer stops blinking. If the cable is connected before the DATA indicator stops blinking, the printer driver may not work correctly.
When you use the printer with SCSI interface, restart of the operating system is required by the following procedures.
a) Exit the operation system and turn off the personal computer.
b) After connecting the printer, turn on the printer.
c) Turn on the personal computer and startup the operating system.

6) System requirements for USB interface

Use the computers equipped with USB interface listed below.
Computers pre-installed with Windows98/Millennium/2000/XP.
Computers installed with Windows98/Millennium/2000/XP that are USB-guaranteed by the manufacturer.
CP9500DW supports the USB 2.0 (Hi-Speed USB) interface.
As USB 2.0 is completely upwardly compatible with USB 1.1, CP9500DW can be connected with a personal computer on which USB1.1 interface is available.
When you use CP9500DW with USB 2.0 (Hi-Speed USB), the personal computer has to support USB 2.0 (Hi-Speed USB).
For the compatibility of the personal computer with USB 2.0 (Hi-Speed USB), ask the manufacturer of the personal computer.
In the case of Windows XP, when this printer is connected to a personal computer which does not support USB 2.0 (Hi-Speed USB), a message of "A HI-SPEED USB device is plugged into a non-HI-SPEED USB hub." is displayed.

7) Connection of USB cable

When you take out and insert a USB cable after installation of a printer driver, wait 10 seconds or more after extracting a cable.
If the cable is reinserted without leaving an interval, the printer may not operate normally.

8) Print job

Do not delete the print job in the spooler during data transfer. When deleting it, do not start printing until the printer becomes to the initial status.

9)Number of prints

In some application, the number of prints set by the printer driver does not work. Set the number of prints from the print dialog box of the application.

10)Remainings

Remainings on the Paper tab shows the remainings of the ink ribbon by reading information from the printer when the Paper tab is displayed. The information may not be shown during printing.

11)Connection with more than one printer (USB printer)

When more than one CP9500DW is connected to one personal computer, the "Add New Hardware Wizard" will be displayed and installation of printer drivers will be carried out repeatedly for each of connected printers. The same number of printer drivers as that of connected printers are installed.

12)Errors during printing

When an error occurs during printing, it may not be displayed on the monitor. To resume printing, check the indicator on the front of the printer and take the countermeasure. For the indication by the indicator of the printer and the countermeasures, see the operation manual of the printer.

13)Print on the post card size paper

When using the paper for post card , select 10x15(4x6") Fine or 10x15(4x6") Super Fine from the Paper Size.

14)Setting of the color matching

Even if the color matching is set to ON by the printer driver, color matching may not be available with some applications.

15)SCSI board made by Adaptec Inc.

If the symptom of print impossible or print disorder etc. occurs, obtain the driver software made by the Adaptec company, and update.

16)Timeout setting (SCSI printer)

With timeout setting, you can specify how long CPD9500W/CPD9500X should wait for the printer to process the data by second(s).

And if the printer will not return a response within that period of time an error will be reported.

You can also disable the timeout setting by unmarking the "Timeout Setting".

CPD9500W :Timeout setting can be specified using "Set Port" of " Details Property Sheet".

CPD9500X :Timeout setting can be specified using "Configure Port" of "Ports Property Sheet".

17)Printing with SCSI interface

When you use this printer with SCSI interface, make sure to connect the printer and personal computer and turn on the printer before starting up the computer.

2.CPD9500X (Driver for Windows 2000/XP)

When you print and it is displayed as "Parameter's value is invalid.", perform the following operations.

a) Select "Device Manager" from "Hardware" tab of "System Properties."

b) Select "Scan for hardware changes."

3.CPD9500W (Driver for Windows 98/Me)

When you use this printer with this driver, install the latest ASPI layer to your computer. You can download the latest ASPI from the Web site of Adaptec Inc.

<http://www.adaptec.com>

Operating directions for customer's purpose

1. When making an image data

If you make an image data with some application softwares such as Photoshop, refer to the following values.

Paper size			9x13(3.5x5")	10x15(4x6")	13x18(5x7")	15x20(6x8")	15x23(6x9")
Setting Item			Fine	Fine	Fine	Fine	Fine
Pixel Dimensions	Width	pixels	1240	1416	1812	2152	2152
	Height	pixels	1812	2152	2452	2792	3146
Print Size	Width	mm	91.03	103.95	133.02	157.98	157.98
	Height	mm	133.02	157.98	180	204.96	230.95
	Width	inch	3.584	4.092	5.237	6.22	6.22
	Height	inch	5.237	6.22	7.087	8.069	9.092
	Resolution	pixels/inch	346	346	346	346	346

Paper size			9x13(3.5x5")	10x15(4x6")	13x18(5x7")	15x20(6x8")	15x23(6x9")
Setting Item			Super Fine	Super Fine	Super Fine	Super Fine	Super Fine
Pixel Dimensions	Width	pixels	2480	2832	3624	4304	4304
	Height	pixels	3624	4304	4904	5584	6292
Print Size	Width	mm	182.06	207.9	266.04	315.96	315.96
	Height	mm	266.04	315.96	360	409.92	461.9
	Width	inch	7.168	8.185	10.474	12.439	12.439
	Height	inch	10.474	12.439	14.173	16.139	18.185
	Resolution	pixels/inch	346	346	346	346	346

The values shown above are when the portrait orientation is selected.

2. When you want to adjust the color of the print image.

Note that the effects are invalid on the display if you make following setting.

- 1) When you want the density of entire print picture to be thick (dark), decrease the value of "Brightness" of the color adjustment dialog.
- 2) When the focus of the print picture is loose (The contrast is weak), increase the value of "Contrast" of the color adjustment dialog.
The contrast becomes stronger.
- 3) When you want to change the color of printout.
Change the value of "Brightness".
Increase Red : Increase the "R" value of the color adjustment dialog.
Increase Green : Increase the "G" value of the color adjustment dialog.
Increase Blue : Increase the "B" value of the color adjustment dialog.
- 4) When you want to adjust Gamma of the printout.
By moving the graph of the Gamma adjustment dialog with mouse, The density of the entire image can be adjusted to the arbitrary Gamma curve.
The density becomes high (dark) when decrease the output value compare with the input value.
The density becomes low (bright) when enlarging the output value compare with the input value.

3. Making the ICC profile

Refer to the following when you make a suitable ICC profile for the system to be used and apply it to the printer driver.

- 1) Set the printer driver as follows when you print the basic color chart for making ICC profile using the printer.
Delete the ICC profile set on the "Color control" tab of the printer property.
Set the "Color matching" on the option tab of the printer driver to ON.
- 2) Add the new ICC profile using the "Color control" tab of the printer property.

Prohibition matter

We prohibit Reverse Engineering, decompiling or reverse assembling of this driver software.

Exemption from responsibility

Occasionally, this software does not operate normally depending on operating environment.

Moreover, Mitsubishi Electric Co. will not assume any responsibility for damage(including, but not limited to, lost profit or damage caused from special circumstances etc.) occurring during the use of this driver.