

# Windows 7 Printer Driver Installation procedure

This is to explain how to install Windows Vista printer driver for Mitsubishi digital printer to Windows 7.

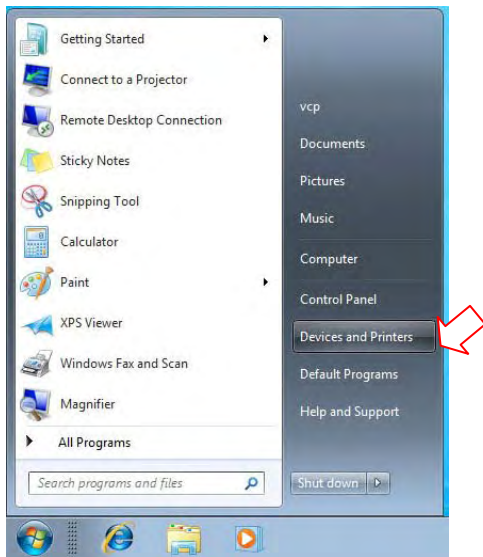
\* Although “CP9550D/DW” is shown through this document, the same procedure can be used for other models.

## 1. ADD PRINTER DRIVER

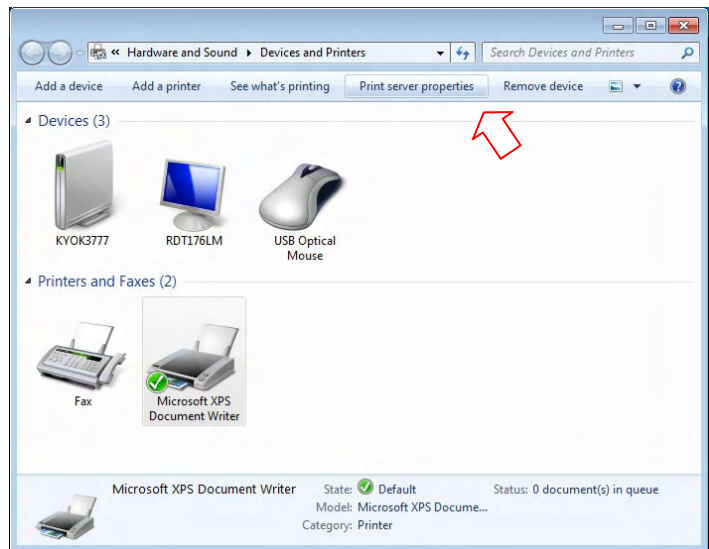
<NOTE> Do not yet connect the printer to your PC.

If the printer is already connected to a computer via USB, proceed to section 2. UPDATE PRINTER DRIVER.

- 1) Click Start button and select “Devices and Printers” from Start Menu. <Fig. 1>
- 2) In “Devices and Printers” window, while any of icon listed under “Printers and Faxes” is selected, click “Print server properties” <Fig. 2>

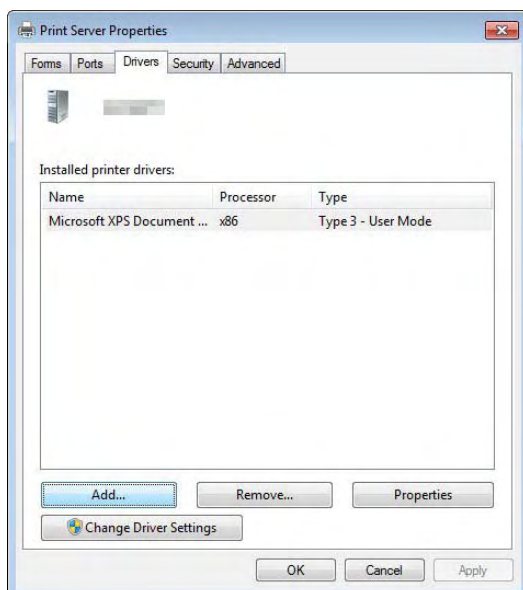


<Fig.1>

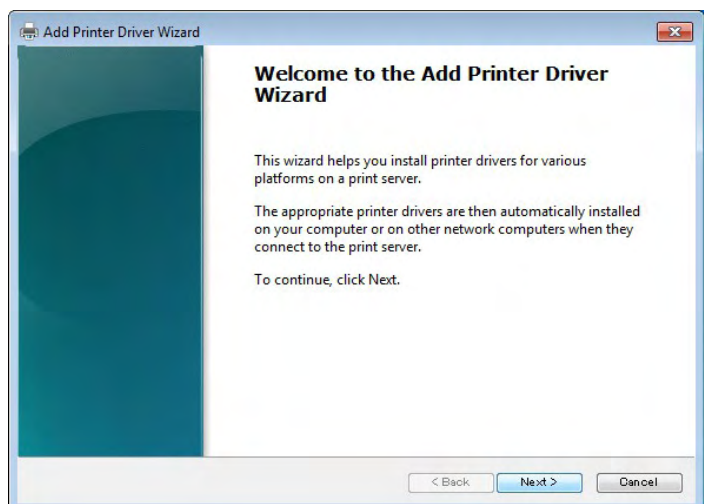


<Fig.2>

- 3) Open “Drivers” tab of “Print Server Properties”, and click “Add...” button. <Fig.3>
- 4) Click “Next>” button on “Welcome to the Add Printer Driver Wizard” <Fig.4 >

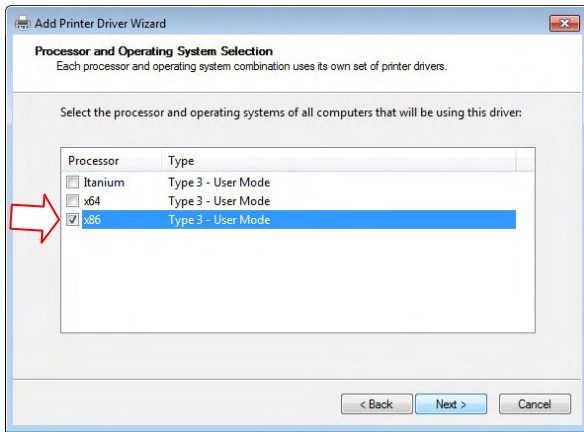


<Fig.3>

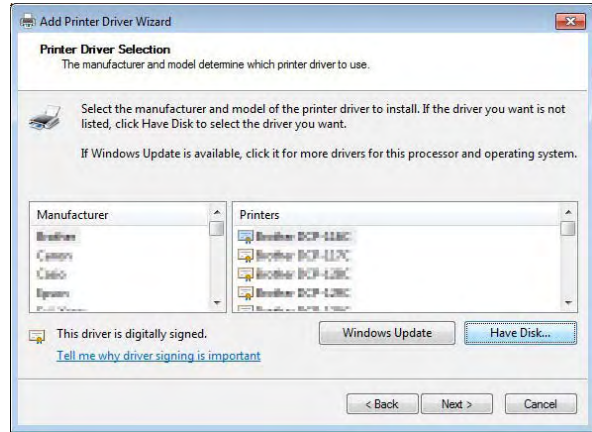


<Fig.4>

- 5) Make sure that “x86” (in case of 32 bit driver) has a tick mark, then click “Next >” button. <Fig.5>
- 6) Click “Have Disk” to browse and select the folder where the printer driver is stored. <Fig.6>

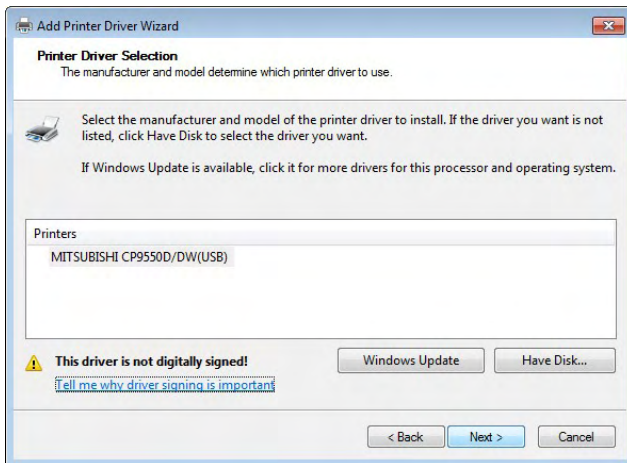


<Fig.5>

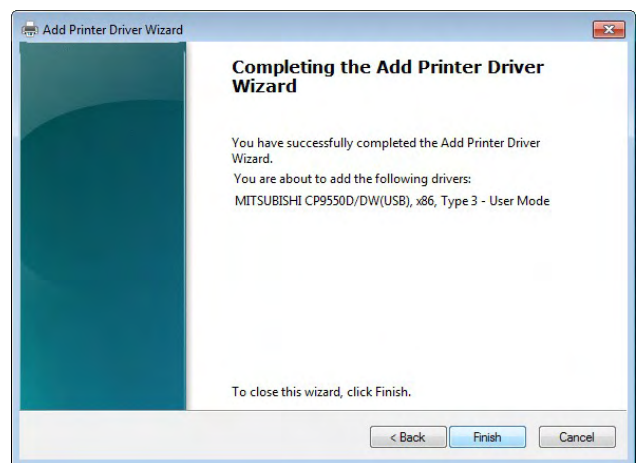


<Fig.6>

- 7) Click “Next >” button. <Fig.7>
- 8) Click “Finish” button <Fig.8>

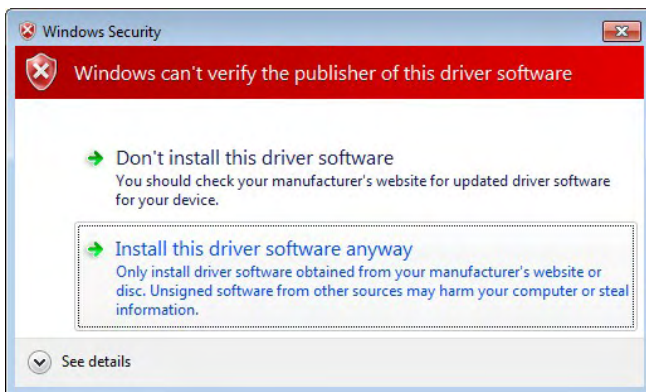


<Fig.7>



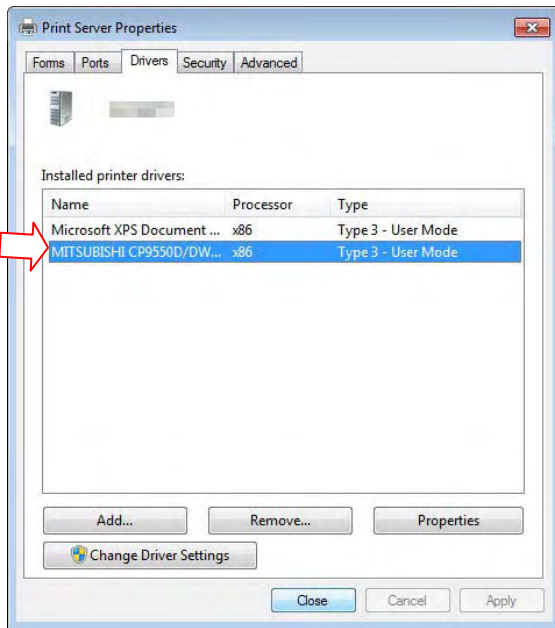
<Fig.8>

- 9) Select “Install this driver software anyway” <Fig.9>  
Wait for a while until “Add Printer Driver Wizard” windows <Fig.8> is automatically closed when the driver installation is completed.



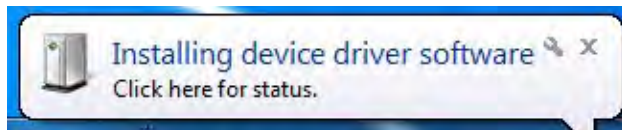
<Fig.9>

- 10) The installed printer driver will be displayed in “Print Server Properties”, Drivers tab. Click “Close” button. <Fig.10>



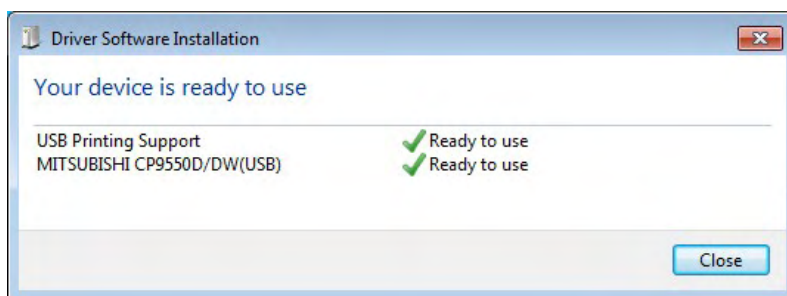
<Fig.10>

- 11) Now, power on the printer and connect it to your computer with USB cable.  
12) The driver software will be automatically installed.  
Click the balloon to check the installation status.<Fig.11>



<Fig.11>

- 13) Click “Close” button to finish the installation. <Fig.12>

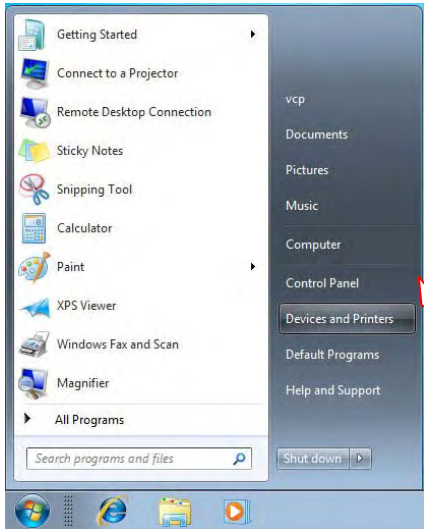


<Fig.12>

## 2. UPDATE PRINTER DRIVER

If the printer is already connected to a computer before the above steps, proceed following settings to update the printer driver software.

- 1) Click Start Button and select “Devices and Printers” from Start Menu. <Fig.13>
- 2) Right-click of USB PRINTER icon under “Unspecified” category, and select “Properties” <Fig.14>

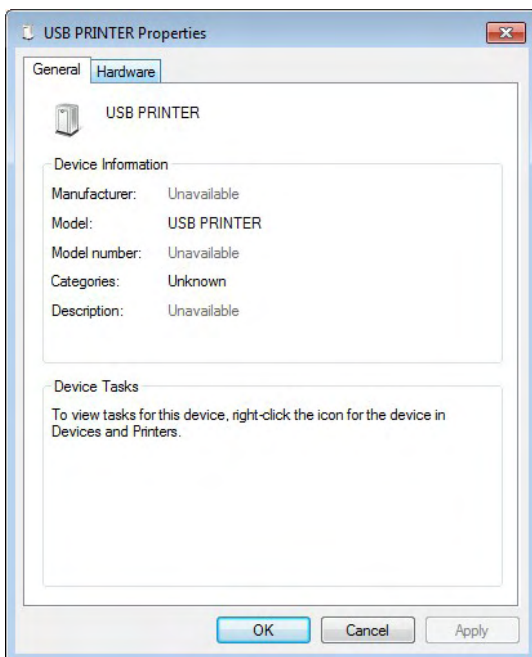


<Fig.13>

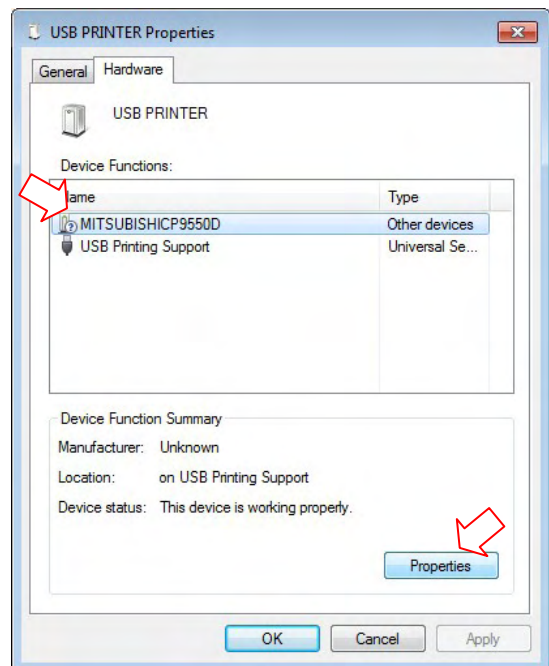


<Fig.14>

- 3) Open “Hardware” tab of “USB PRINTER Properties”. <Fig.15>
- 4) Select your printer in “Device Functions” list, and click “Properties” icon. <Fig.16>



<Fig.15>

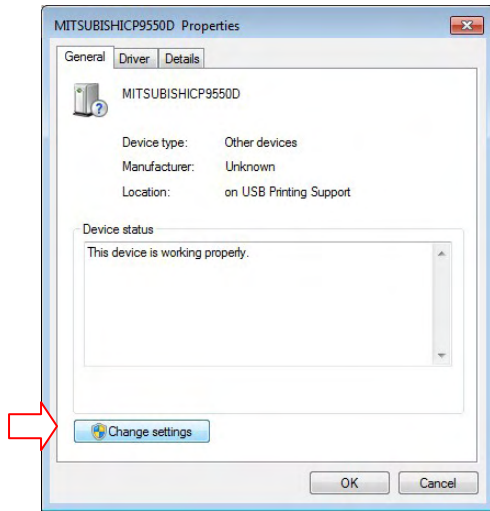


<Fig.16>

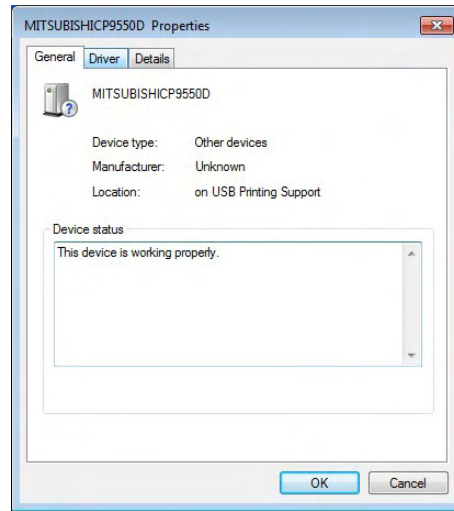


5) Click “Change settings” button (in case of 32bit version). <Fig.17>

6) The similar window but no “Change settings” button at the bottom left is displayed. Open “Drivers” tab. <Fig.18>



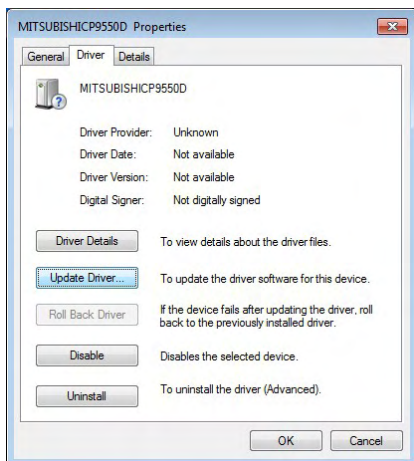
<Fig.17>



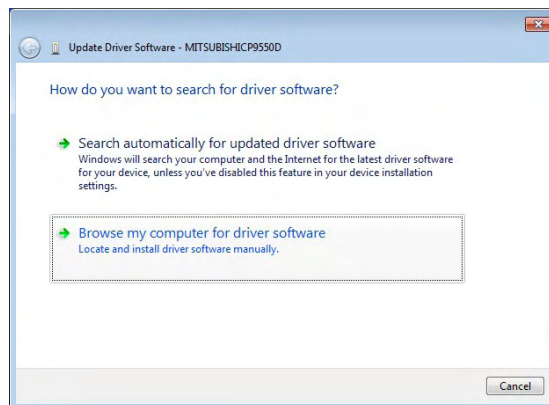
<Fig.18>

7) Click “Update Driver...” button. <Fig.19>

8) Select “Browse my computer for driver software.” <Fig.20>



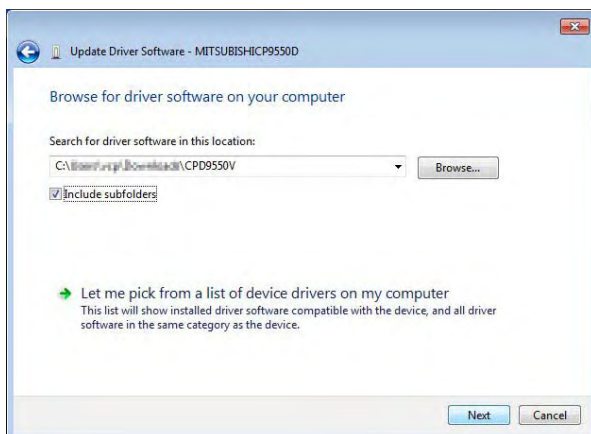
<Fig.19>



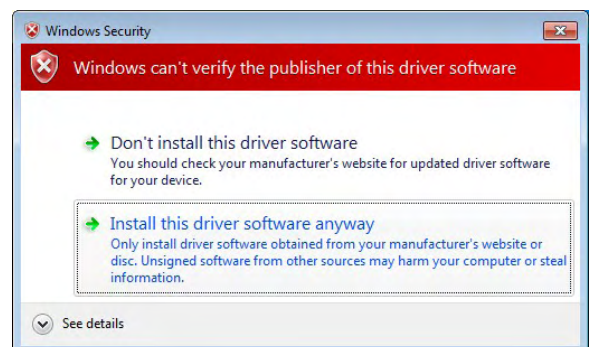
<Fig.20>

9) Click “Browse...” button to select the folder where the printer driver software is stored. <Fig.21>

10) Select “Install this driver software anyway”. <Fig.22>

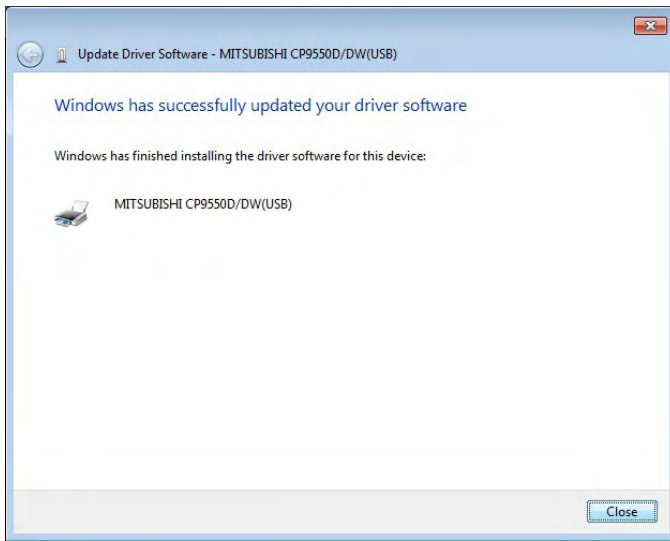


<Fig.21>



<Fig.22>

11) Click “Close” button to finish the installation. <Fig.23>



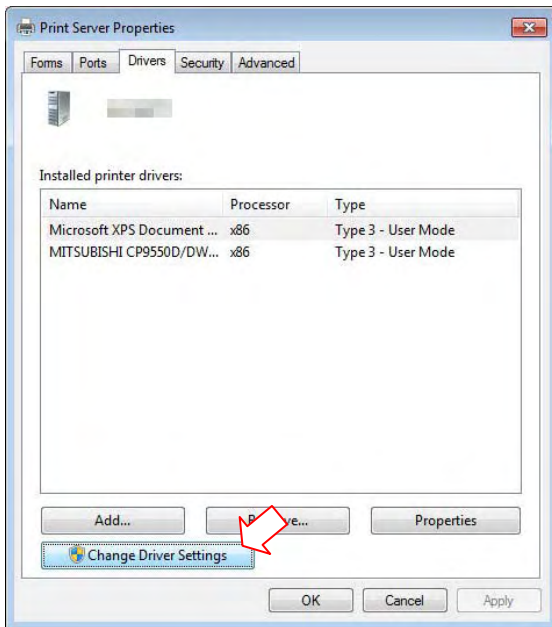
<Fig.23>

### 3. Uninstallation

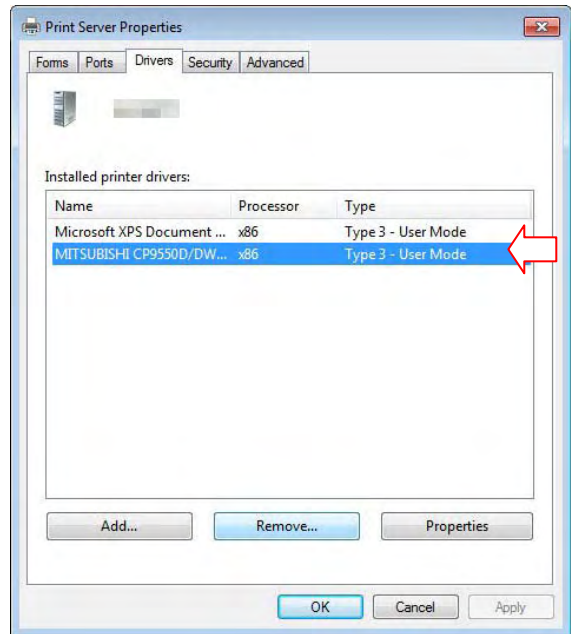
Operate the following procedures to uninstall the printer driver.

When uninstalling the printer driver, confirm that the printer driver is not used from the application or the print job does not remain in the spooler.

- 1) Click Start button and select “Devices and Printers” from Start Menu.
- 2) Right-click the printer icon to be removed and select “Remove device”.
- 3) Click “Yes” button in the “Remove Device” confirmation dialog.
- 4) Select any of icon under “Printers and Faxes” category in the “Devices and Printers” window, select “Printer server properties” at the top of the window.
- 5) Open “Drivers” tab of “Printer Server Properties” and click “Change From Settings” button.  
(in case of 32bit version) <Fig.24>
- 6) The similar windows but no “Change From Settings” button at the bottom left is displayed.  
Select the printer driver to be removed and click “Remove” button. <Fig.25>



<Fig.24>



<Fig.25>

- 7) Select “Remove driver and driver package.” In “Remove Driver And Package” dialog and click “OK”.
- 8) Click “Yes” button in “Printer Server Properties” confirmation dialog.
- 9) Click “Delete” button when “Driver package information collected” is displayed in “Remove Driver Package” dialog.
- 10) Restart the computer.

Microsoft Windows, Windows7 and Windows Vista are either registered trademarks or trademarks of Microsoft Corporation in the United States and/or other countries.