

Update tool for CP3800 Firmware and Color-control Data

2010.04.15

MITSUBISHI ELECTRIC CORPORATION



All rights for this document are the property of MITSUBISHI ELECTRIC CORPORATION.



The contents of this document may be changed without prior notice.

Copyright(C) MITSUBISHI ELECTRIC CORPORATION. All Right Reserved

This is an explanation for the CP3800 Version Up Tool, to update the printer's firmware and color control data.

< Contents >

1. CP3800 Version Up Tool Execute File Names.....	1
2. Running CP3800 Version Up Tool	1
3. CP3800 Version Up Tool Window Explanation	3
4. Starting the Update	4
5. Finishing the update	5

1. CP3800 Version Up Tool Execute File Names

The CP3800 Version Up Tool has a specific execute file for each version to be updated.

The execute file names provided with the CP3800 Version Up Tool this time, and their corresponding update firmware and color control data versions are shown below.

	For 32bit OS	For 64bit OS
Folder	\\CP3800_0130_Win32	\\CP3800_0130_Win64
CP3800 Version Up Tool Execute File Name	CP3800_0130_32.EXE	CP3800_0130_64.EXE
Firmware Version	CP3800 1.30 (Data File Name CP3800_0130.S)	
Color Control Data Version and Checksum ()=Data File Name	CP38_300_0130.CWD FC36 (CP38_300_0130.CWD) CP38_600_0130.CWD 8D66 (CP38_600_0130.CWD)	
DLL file to use	CxStat.dll	CxStat64.dll

When executing, select all the files of one of the above shown folders according to OS environment of use, and save into one folder.

(The firmware and color control versions shown in the following explanations differ from that provided at this time.)

2. Running CP3800 Version Up Tool

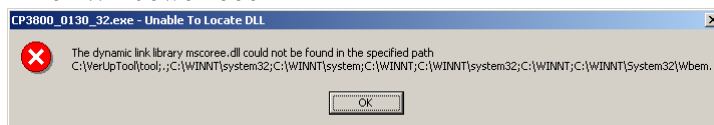
※ A printer driver needs to be installed when using this tool.

To begin with, turn on the printer and connect it to the host computer with the USB cable. Check that there is paper and ribbon set in the printer, the cover is closed, and there are no errors (the printer LED should be green).

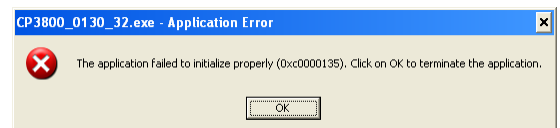
Run the CP3800 Version Up Tool execute file (*.EXE).

Note) When the start of this tool by 2000 or XP and the following message are displayed, it is necessary to install Microsoft.Net Framework. (In Windows 7 or Windows Vista, the .Net Framework is installed by the standard.)

For Windows 2000



For Windows XP

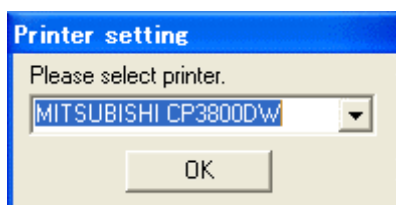


.Net Framework can be downloaded from following URL. The version that can be used is different depending on each OS. Details are described in URL.

- .Net Framework 2.0 download (Windows 2000 and later.)
<http://msdn.microsoft.com/en-us/netframework/aa731542.aspx> (English)
- .Net Framework 3.5 sp1 download (Windows XP and later.)
<http://msdn.microsoft.com/en-us/netframework/aa569263.aspx> (English)

When running CP3800 Version Up Tool, if there are multiple printer ports, the following printer select window will open.

Select the appropriate printer, and click “OK”.

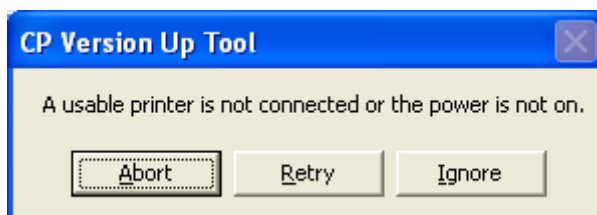


If there are no printer ports, the following confirmation window will open.

Check the printer driver of USB port where the printer is connected.

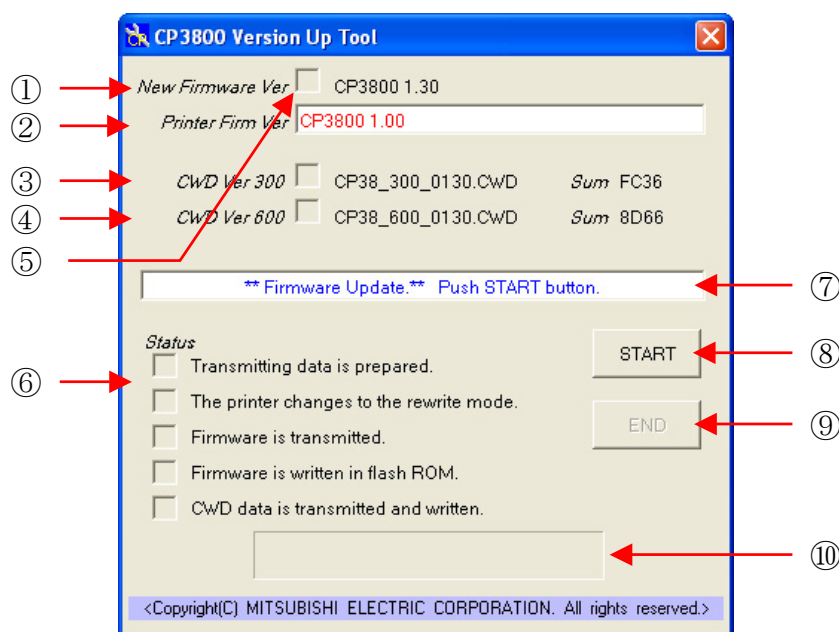
After checking that power is on and the USB is connected, click “Retry” to start the process again.

Clicking “Abort” will stop the update process.



3. CP3800 Version Up Tool Window Explanation

Once CP3800 Version Up Tool is running, the following window will open.

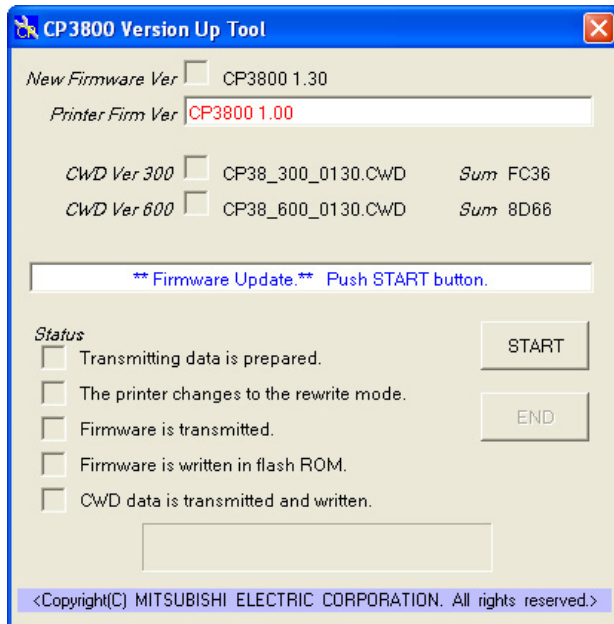


CP3800 Version Up Tool Window

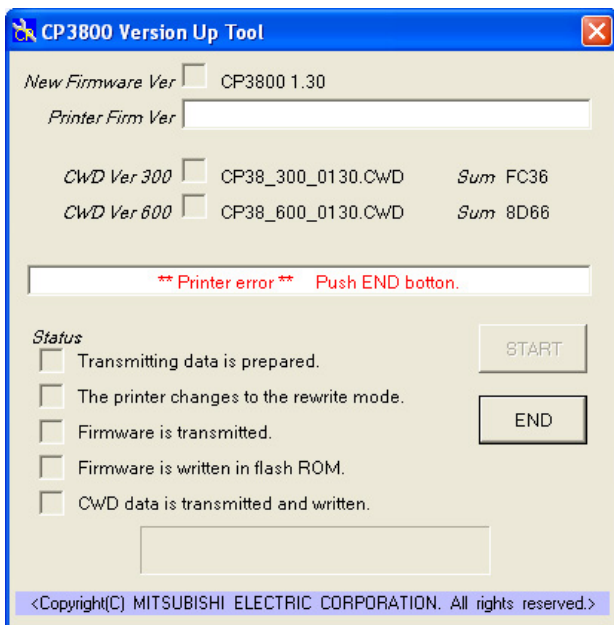
- | | |
|--------------------|--|
| ① New Firmware | This displays the new firmware version that will be used in the update. |
| ② Printer Firm Ver | This displays the printer's current firmware version.
If it differs from the new version, it will be displayed with red letters. |
| ③ CWD Ver 300 | This displays the new color control data (300 dpi resolution) version and checksum value (Sum) to be updated.
When the update is complete, the Sum value will be displayed in blue. |
| ④ CWD Ver 600 | This displays the new color control data (600 dpi resolution) version and checksum value (Sum) to be updated.
When the update is complete, the Sum value will be displayed in blue. |
| ⑤ Check Box | This box will have a check if the new firmware or color control data has already been written to the printer, or if the update has been completed. |
| ⑥ Status | This checks the progress status for the update. |
| ⑦ Indicator | This shows the printer's current status, and the application operating command. |
| ⑧ START | Update start button
Clicking this button starts the update. |
| ⑨ END | End the update. |
| ⑩ Status Bar | Displays the progress status for the update. |

4. Starting the Update

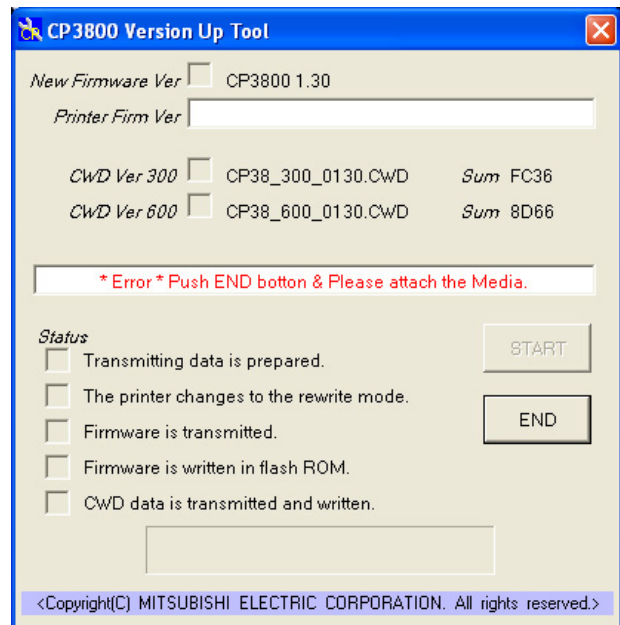
On the CP3800 Version Up Tool window, click the “START” button to begin the update.



When starting the update, if the printer has error, the following printer error will be displayed. The same error will be shown if the USB cable is disconnected or the power is off. If the printer has a ribbon error, media error will be displayed like a right figure.



Printer Error

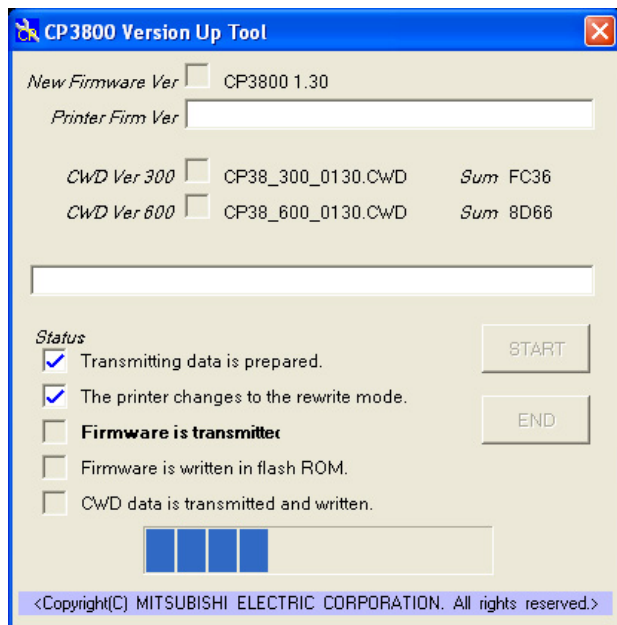


Ribbon End

If there is an error, click “END” or close the window to stop CP3800 Version Up Tool, fix the error, be sure there are no errors (printer LED is green), and run CP3800 Version Up Tool again.

If the USB cable was disconnected or the power was off, check that the USB cable is connected and the power is turned on.

When you click “START” and start the update, the window display will change to the following, and you can check the update progress status.



! Notice !

While updating, do not disconnect the USB cable or turn the power off.

Also, do not start or run other software at the same time.

When the printer enters the rewrite mode, the LED will change from green to flashing green. When the firmware update is complete, the printer’s buzzer will beep, the new firmware will be run automatically, and the color control data update will begin.

5. Finishing the update

When all the updates are complete, the window display will look like the following.

Also, the printer LED will revert from flashing green to green.

Confirm the New Firmware and New CWD Ver boxes are checked, and click the “END” button or close the window to end CP3800 Version Up Tool.

When all the updates are completed, reboot the host computer.

When the host computer is not rebooted, the new function might not be able to be used.

